



# The Ecdysiast

*Newsletter of The Crustacean Society*

## *Message from the President...*

### *Inside...*

#### *Message from the President*

1-2

#### *TCS Treasurer's Report*

4-5

#### *Recent Meetings*

7-10

*XI COLACMAR*.....7

*ICC6*.....8-10

#### *Upcoming Meetings*

11-14

*TCS Winter meeting*

(Orlando).....11

*TCS Summer meeting*

(Juneau, AK).....12-13

*2007 (Chile)*.....14

#### *Recent Publications*

15-16

#### *Recent Research*

16-17

*ANDEEP III*.....16-17

#### *TCS Student Fellowships Announcement and Application*

19-20

#### *TCS Board Elections*

21-24

Greetings to all!

It has never been easy for me to compose these addresses over the past two years, and it is especially difficult to write this, my farewell address as TCS President.

We are all so busy these days, and most of us hesitate to assume additional responsibilities. In fact, I have to constantly remind myself to "Just say no!" when I am first asked to volunteer for anything new. But I must admit that I am truly glad that my response, when urged to run for TCS President a few years ago, progressed from "No way!" to "Well, maybe..." to "All right, already! I'll do it!" And I can honestly say that the role has never become a burden owing to the support and camaraderie of my fellow officers, who mercifully took up the slack when I invariably fell behind. To them I offer my warm and abundant thanks. I owe a special debt of gratitude to David Camp, recently retired editor of *JCB*, for his wise counsel and steady hand at the helm of *JCB*. And I wouldn't have been able to sleep nights if not for Treasurer Mary Belk's fiscal genius.

I hope you share my opinion that TCS has been working diligently to grow and improve as a Society, to change with the times, to offer more to its membership, and above all, to advance carcinology. We have revitalized and cemented our ties with SICB in response to the justified concerns of some of our members. We have taken our journal into the electronic age with members receiving on-line access to *JCB* and complimentary PDF files of their publications. We have made publishing in *JCB* more affordable by going to a larger format and holding page charges (always optional for members!) to a minimum. We have instituted a graduate-research-fellowship program that distributes over five thousand dollars annually. We have added an undergraduate category to our student award competition. And we now accommodate the Society's growing international base while recognizing its American roots by alternating the venues of our mid-year meetings between locations within and without the U.S. These changes are impressive and reflect upon a dynamic, evolving Society.

While preparing the slideshow chronicling the 25-year history of TCS that was shown at the Silver Jubilee during ICC6 this past summer, I became very aware of the important role our Society has played, how much TCS has accomplished over the years, and the very real *need* for our Society. TCS was founded by our colleagues "...to advance the study of all aspects of the biology of crustaceans by promoting the exchange and dissemination of information throughout the world" (Article 2 of the TCS Constitution). This need still exists today, and it will continue to exist into the future as long as there are folks like us who see beauty and mystery in carapaces and pleopods. But it is up to all of us to remember this need and to keep TCS going strong.

*continued...*



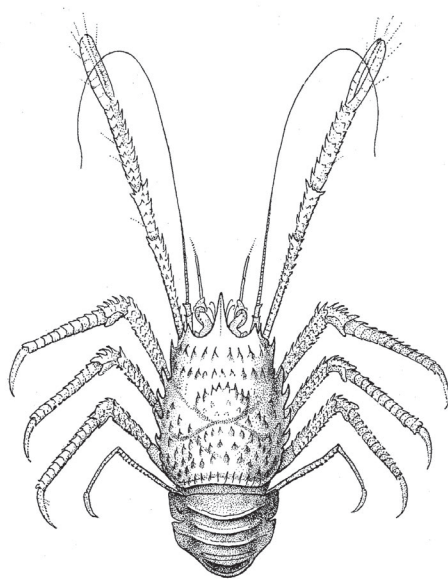
### Message from the President...

I also became keenly aware of how much TCS has accomplished in 25 years: the *thousands* of published, peer-reviewed articles documenting 25 years of varied research, the numerous deserving colleagues and students we have recognized with awards, the many scientific meetings and symposia we have organized and financially supported. I ask you to take a moment and just try and imagine your professional life *without* TCS and JCB! Clearly there is a synergy to TCS that allows us, as a group, to do so much more than any one individual can manage alone, and it is clear to me that our Society does indeed do much that is good and decent.

We are fortunate that Jeff Shields will be serving as President for the next two years. But as capable as Jeff is, he still will need your input and help! I know I certainly did, and I deeply thank you for your ideas, your support, and for the wonderful privilege of serving TCS.

I wish you well,

*Trisha Spear*



### CRUST-SOC@VIMS.EDU, the Crustacean Society's List server

The Crustacean Society now has an email list server that is only open to members of the society. The sole function of this list server is to provide you with timely official society business and important society announcements. CRUST-SOC is moderated and closed and is not a forum for discussion. It is not meant to replace CRUST-L because the latter is open to nonmembers and is for broader discussion on Crustacea. For suggestions, contact [jeff@vims.edu](mailto:jeff@vims.edu), your TCS Secretary, or any member of the board (listed at our website <http://www.vims.edu/tcs>).

You can subscribe to CRUST-SOC by becoming a member of the society. Members who aren't subscribed can send SUBSCRIBE CRUST-SOC YOUR NAME (not your email address) as the message body to [LISTPROC@VIMS.EDU](mailto:LISTPROC@VIMS.EDU). You can unsubscribe by sending UNSUBSCRIBE CRUST-SOC to [LISTPROC@VIMS.EDU](mailto:LISTPROC@VIMS.EDU).

We have taken every effort to ensure that your email address has been correctly entered into CRUST-SOC. However, several members have changed email addresses or have made mistakes in entering email addresses. Thus, if you are a member and are not on the list, please enter your correct email address on the annual subscription form, and please subscribe as detailed above. Remember, CRUST-SOC is the official email list server for society information and not a forum for discussion.

### CRUST-L@VIMS.EDU, the Discussion List for Crustacea

CRUST-L@VIMS.EDU is the email list server for those interested in Crustacea. It is an informal scientific forum for discussion on all aspect of the Crustacea. CRUST-L is a moderated, open list, but you have to be a member to post messages to it. You can subscribe to the list by sending SUBSCRIBE CRUST-L YOUR NAME (not your email address) as the message body to [LISTPROC@VIMS.EDU](mailto:LISTPROC@VIMS.EDU). You can unsubscribe by sending UNSUBSCRIBE CRUST-L to [LISTPROC@VIMS.EDU](mailto:LISTPROC@VIMS.EDU). Use [LISTPROC@VIMS.EDU](mailto:LISTPROC@VIMS.EDU) to post administrative commands such as SUBSCRIBE, INFO, HELP. Use [CRUST-L@VIMS.EDU](mailto:CRUST-L@VIMS.EDU) to post messages to CRUST-L. The listproc software includes several features such as searchable archives, and a digest mode for intermittent mailings.



---

## *The Crustacean Society Board Members, 2005*

---

**President:**

Trisha Spears  
Florida State University  
Tel: (850) 644-1847  
Fax: (850) 644-9829  
Email: spears@bio.fsu.edu

**President-Elect:**

Jeffrey D. Shields  
Virginia Institute of Marine Science  
Tel: (804) 684-7128  
Fax: (804) 684-7186  
Email: jeff@vims.edu

**Past-President:**

Gary C. B. Poore  
Museum Victoria, Melbourne, Australia  
Tel: (61 3) 8341 7436  
Fax: (61 3) 8341 7750  
Email: gpoore@museum.vic.gov.au

**Treasurer:**

Mary Belk  
San Antonio, Texas  
Tel: (210) 224-7743  
Fax: (210) 222-0360  
Email: dbelk@texas.net

**Secretary:**

Chris Tudge  
Biology Department, American University  
and Department of Zoology,  
National Museum of Natural History  
Tel: (202) 885 2033  
Fax: (202) 885 2182  
Emails: ctudge@american.edu;  
TudgeC@si.edu

**Editor, Journal of Crustacean Biology:**

Frederick R. Schram  
University of Washington, WA  
Tel: (360) 221-2173  
Email: jcb@whidbey.com

**Asian Governor:**

Akira Asakura  
Natural History Museum and Institute, Chiba, Japan  
Tel: +81-43-265-3274  
Fax: +81-43-266-2481  
Email: asakura@chiba-muse.or.jp

**European Governor:**

Angelika Brandt  
University of Hamburg, Germany  
Tel: +49/40-42838-2278  
Fax: +49/40-42838-3937  
Email: abrandt@zoologie.uni-hamburg.de

**Indo-Pacific Governor:**

Colin McLay  
University of Canterbury, New Zealand  
Tel: 64 3 364 2887  
Fax: 64 3 364 2024  
Email: c.mclay@zool.canterbury.ac.nz

**Latin American Governor:**

Michel Hendickx  
Unidad Academica Mazatlan, Mazatlan, Mexico  
Tel: (55) (21) 552-5422  
Fax: (55) (21) 551-6446  
Email: michel@ola.icmyl.unam.mx

**North American Governor:**

Michael Childress  
Clemson University, South Carolina  
Email: mchildr@clemson.edu

**Program Officer:**

Christopher B. Boyko  
American Museum of Natural History, NY  
Email: cboyko@amnh.org

**SICB Liason Officer:**

Brian Tsukimura  
California State University, Fresno, CA  
Email: briant@csufresno.edu

---

The Ecdysiast is published twice yearly and mailed with the May and November issues of the *Journal of Crustacean Biology*. In addition, each issue, from May 1997 to present, is available to be downloaded as a pdf at The Crustacean Society's website (see <http://www.vims.edu/tcs/ecdysiast.htm>).

Submissions for the May newsletter should be received by mid March, while those for the November newsletter should be received by mid September. All types of crustacean related contributions are encouraged, including announcements of upcoming workshops and meetings, regional updates, current research, meeting summaries (with pictures!), new publications and any other crustacean news.

Send all material directly to the Editor:

Rachael A. King, Southeastern Regional Taxonomic Center, Marine Resources Research Institute,  
PO Box 12559, Charleston, SC 29422-2559, USA.

Ph: 843-953-9794. Fax: 843-953-9820. Email: rachaelking@crustacea.net



## ***Treasurer's Report for The Crustacean Society for the year 2004***

I am glad to report that TCS has had a good year. The market gave us \$39,000.00. We have invested more of our money as it became available. We have been able to pay all our bills. The worst thing is we have lost membership. We need to focus on adding membership.

### **Financial Standing Dec. 31, 2004 for The Crustacean Society**

Charles Schwab Accounts	Total	\$ 295,927.18	Wells Fargo Savings & Ck	\$42,069.04
JCB Fund (Windsor II)		\$184,402.56	Douglas County BK CD's	\$62,000.00
GDB Memorial Scholarship			(may need adjustment later)	
Fund (Wellington)		\$41,642.09	Douglas County BK Checking	\$45,966.03
General Endowment Fund				
(Harbor Fund)		\$20,464.45	Editor's office prepaid expenses	\$1,177.53
Investment Funds				
Harbor HY Bond Fund		\$2,425.66		
Navellier Mid Cap Growth		\$33,942.16		
Nasdaq 100 Shares		\$11,974.50		
Cash		\$1,075.76		
			<b>Total TCS Funds Dec. 31, 2004</b>	<b>\$447,139.78</b>

### **Editor's Office 2004**

Month	Postage	Telephone	Office Supplies	Long Distance	P.O. Box	Meeting, Travel	Total Exp
January	\$245.52	\$33.61	\$54.98				
February	\$93.34	\$33.61	\$30.25				
March	\$124.26	\$33.09		\$2.43			
April	\$265.23	\$33.17	\$67.35				
May	\$154.75	\$33.17			\$220.00		
June	\$114.68	\$33.17					
July	\$205.62	\$33.21	\$30.28				
August	\$138.49	\$33.21					
September	\$257.70	\$33.47	\$19.24	\$10.89		\$22.00	
October	\$96.16	\$33.47	\$54.98			\$1,451.50	
November	\$228.70	\$33.47	\$36.34				
December	\$125.10	\$33.47	\$103.28				
<b>Totals</b>	<b>\$2,049.55</b>	<b>\$400.12</b>	<b>\$397.40</b>	<b>\$13.32</b>	<b>\$220.00</b>	<b>\$1,473.50</b>	<b>\$4,553.89</b>

### **Expenses paid during 2004**

<b>JCB Expenses:</b>		Society Operations	\$13,915.76
Editor's Stipend	\$10,000.00	JCB	\$64,326.82
Back Issue Mailing	\$417.61	Editor's Office	\$4,553.89
Back Issue Storage	\$118.76	Treasurer's Office	\$4,276.23
PDF files purchased	\$1,316.59	Newsletter	\$1,750.28
Printing, Distribution	\$52,473.86	ASC membership	\$350.00
Total	\$64,326.82	Awards	\$150.00
		Socials & Memorials	\$1,949.00
		Banking Fees	\$1,689.72
		Tax Preparation	\$1,303.36
		<b>Total Expenses</b>	<b>\$94,265.06</b>

*continued...*

**Treasurer's Report...**

## Income For 2004

<b>Contributions</b>	<b>\$885.00</b>
General Fund	485.00
Endowment Fund	195.00
D Belk M Sch Fund	205.00

<b>JCB</b>	<b>\$40,876.98</b>
BioOne	10,539.98
Color Plates	1,515.00
Figures	4,229.00
Handling Fee	1,750.00
Page Charges	19,605.00
Revisions	643.00
Single Issue Sales	515.00
Tables	2,080.00

Library Subscriptions	\$40,820.55
Membership Dues	\$58,090.00
Membership Label Sales	\$250.00
Unrealized Gains on Invest.	\$39,003.47
Bank and CD interest	\$1,397.23

Total Income for 2004 = \$ 181,323.23

**Minus expenses** - 94,265.06

---

Positive difference \$87,058.17

Respectfully Submitted  
Mary Schug Belk, TCS Treasurer

**A Survey of our Crustacean Community**

Jeff Shields and Chris Tudge are developing a membership survey which they hope to have available online this spring. The primary goal of the survey is to identify how the society can better serve the membership, to analyze statistics regarding members and membership, and to provide some introspection on how we're doing as a society. When ready, the survey will be announced on CRUST-SOC. If anyone has experience with surveys and wants to help out, let us know.

**"A Delicate Matter..."**

A recent topic of discussion among Board members has been the need for TCS to implement a more equitable procedure for the publication of obituaries in *JCB*. Currently, obituaries are published in *JCB* only if someone close to the departed individual spearheads the effort. The achievements of colleagues whose quiet departure is known only to a few, however, are not memorialized. Henceforth, the Board asks that members please inform the TCS Secretary (Chis Tudge, ctudge@american.edu) of any fellow carcinologist who has passed away, so that we may recruit someone to draft a fitting tribute to be published in our journal.

- Trisha Spears, TCS President





# The Crustacean Society



## T-shirt Order Form

Name: \_\_\_\_\_

Shipping address: \_\_\_\_\_

\_\_\_\_\_

\_\_\_\_\_

E-mail: \_\_\_\_\_

**SHIRT:** TCS members: US \$7 Non-members: US \$10

**GREY SHIRT**  
 quantity cost  
 Large: \_\_\_\_\_ @ \$ \_\_\_\_\_  
 XL: \_\_\_\_\_ @ \$ \_\_\_\_\_  
 XXL: \_\_\_\_\_ @ \$ \_\_\_\_\_

**NAVY SHIRT**  
 quantity cost  
 Large: \_\_\_\_\_ @ \$ \_\_\_\_\_  
 XL: \_\_\_\_\_ @ \$ \_\_\_\_\_  
 XXL: \_\_\_\_\_ @ \$ \_\_\_\_\_

NB: We are planning to order more small and medium T shirts this fall, but currently have none in stock.

**HAT (navy only):** TCS members: US \$3 Non-members: US \$6

quantity cost  
 \_\_\_\_\_ @ \$ \_\_\_\_\_

**SHIPPING:** for orders US \$0 - \$10: **US \$2** **US \$4 for overseas**  
 for orders US \$11 - \$20: **US \$4** **US \$6 for overseas**  
 for orders US \$21 - \$31: **US \$6** **US \$6 for overseas**  
 for orders US \$41 - \$51: **US \$8** **US \$8 for overseas**

**TOTAL PAID:** \_\_\_\_\_

Send checks made out to The Crustacean Society. If paying by VISA or Mastercard, include card number, expiration date, type of card, and please sign the form. Other cards are not accepted.

Card details:

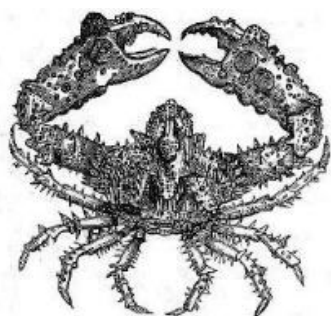
Send orders to: Dr. Jeffrey Shields, POB 1346, VIMS, Gloucester Point, VA 23062, USA



## Recent Meetings, Conferences and Workshops...

### Crustacea Symposium

Viña del Mar (Chile),  
16-20 May 2005



### The Crustacean Society Website

<http://www.vims.edu/tcs>

The Crustacean Society website is designed to provide our members with up-to-date information on meetings, society news, business, instructions for the Journal of Crustacean Biology, the Ecdysiast, and other helpful links. Noteworthy features include: (1) **membership applications and a list of benefits to members**, (2) a **poster for recruitment to the society** (good for related meetings and great pics!); (3) **fliers for and official info on upcoming meetings**; (4) **downloads** such as **Martin & Davis's (2001) Classification of the Crustacea**; and of course, (5) **timely tracking of your manuscripts in review at JCB**.

The TCS website is designed to serve you. If you have an idea, item, link, or information of general interest, please forward it to [jeff@vims.edu](mailto:jeff@vims.edu) for inclusion in our website. We're also looking for participants to help maintain this site, so get involved!



More than 840 contributions (345 oral) from 16 countries were presented at the XI COLACMAR – XXV Congreso de Ciencias del Mar de Chile, organized by the Sociedad Chilena de Ciencias del Mar and the Pontificia Universidad Católica de Valparaíso, in the beautiful city of Viña del Mar, Chile. Within this congress, *Patricio Arana* (Escuela de Ciencias del Mar, Pontificia Universidad Católica de Valparaíso, Chile) and Ingo Wehrtmann (Escuela de Biología, Universidad de Costa Rica, Costa Rica) organized a special session on crustaceans. What was initially planned as a modest “mini symposium” turned out to be a 2-day meeting with seven sessions. The participants enjoyed more than 100 talks and posters from Latin American carcinologists, presenting and discussing the results of their latest research. Not surprisingly, topics related to the fishery of decapods in Argentina, Brazil, Chile, Costa Rica and Mexico were predominant; however, a considerable number of presentations concerned population structure, life cycle, physiology, behavior, and recruitment patterns of mostly shallow water decapods. At the end of these two exciting and exhausting days of intense scientific exchange, the Latin American Association of Carcinologists (ALCA) came together to discuss the current situation of ALCA as well as future steps to consolidate the association. During this meeting, coordinated by M. Lucia Negreiros Franzoso (Brazil), Michel E. Hendrickx (Mexico) and Ingo Wehrtmann (Costa Rica), it was agreed, among others, to continue the development of an official website and to design an emblem for the association. Moreover, the more than 50 participants approved to publish a special volume of the “Revista de Biología Tropical” (“International Journal of Tropical Biology and Conservation”) including a selection of the contributions presented during this meeting. Finally, the participants decided to synchronize the organization of a crustacean symposium and the ALCA meeting with the COLACMAR congresses, which will be celebrated every two years.

In summary, the Crustacea Symposium in Viña del Mar provided an excellent opportunity not only to enjoy the exquisite sea food and fabulous wines of Chile, but also to come together with many colleagues and students, and, thus, to facilitate a fruitful exchange among the carcinologists of Latin America.

Submitted,  
Ingo S. Wehrtmann, Universidad de Costa Rica



## *Recent Meetings, Conferences and Workshops...*

### ICC6 July 18-22, 2005 Glasgow, Scotland

#### **Scampie, scrapie and single malts.....**

The Sixth International Crustacean Congress (ICC6) was held on July 18-22, 2005 at the University of Glasgow, Scotland, with over 450 delegates from more than 50 countries in attendance. The ICC6 gathering was also the venue for the Fifth European Crustacean Congress (ECC5), the TCS summer meeting, the TCS 25th anniversary ("Silver Jubilee") event, the 4th Crustacean Larval Conference, the 2nd Biology of the Anomura Symposium and the Frederick R. Schram Special Session on Crustacean and Arthropod Relationships. All of this science was spread across 5 plenary lectures, 8 special symposia, 4 additional symposia, and more than 230 interesting oral presentations and greater than 280 informative posters. The participation by students was especially impressive, and TCS recognized 10 students with awards for Best Oral or Best Poster Presentation.

If that wasn't enough for the intrepid attendees, then the social events list included: the TCS Silver Jubilee party with drinks in the Hunterian Museum and a "slideshow" tribute to the history of TCS; a reception at the Hunterian Art Gallery; the official congress banquet and Ceilidh (or Scottish folk dancing, interestingly pronounced "chelid"; would more than one such dance be pronounced "chela"?); a civic reception hosted by the Lord Provost of Glasgow at the impressively marbled City Chambers; wine socials during the two large poster sessions; and excursions to Loch Lomond, a distillery (of course!), Stirling Castle and the Trossachs (which until this trip I thought were the, ahem... "nether-regions" of William Wallace's brave-hearted men (eg. "If you turn this way me bonnie lass I'll show ye a view of the Trossachs that you've not likely seen").

A memorable moment was Les Watling's presentation of The Crustacean Society's Excellence in Research Award to Frederick R. Schram, and Professor Schram's moving expression of thanks to his colleagues and former students.

All of these events were punctuated by drinks, meals and lively discussions at many local bars, restaurants and churches (yes, the church bar was where the real science was done!). The TCS booth at the meeting was also a lively spot, where many new members joined our ranks and many TCS Silver Jubilee t-shirts and hats were sold.

The West End of Glasgow, with its distinct "university feel" (so familiar to many of us), historical university buildings and grounds and relaxing botanic gardens, was the perfect backdrop for the event. Convenor Douglas Neil, his congress-organizing committee, the international scientific committee, the local Glaswegian organizers, and the many friendly and helpful congress assistants made everyone feel exceptionally welcome and unusually competent. For this we all owe them a big THANK YOU! In fact, we had such a good time that we have all decided to come back next July - is this OK Douglas?

My personal profile of ICC6 in Glasgow is:

**Low points** - running from session "breakout 3" in the rain to try and get to the tea and Scottish butter shortbreads (biscuits/cookies) before they ran out and, the moment the band stopped playing at the Ceilidh.

**High points** - those tasty little haggis tartlet "thingies" at the ICC6 banquet, the look on Deiter Waloszek's face when the third speaker in a row said that insects were just flying crustaceans and, lastly, the sight of so many of our TCS founding members standing to an ovation at the Jubilee event, was just PRICELESS! As we did on that night, we owe them all a debt of gratitude for their good sense, perseverance and hard work to get TCS to where it is today. But most of all, we thank them for sending in their dues! J

See you all at ICC7!

Respectfully submitted,  
Chris Tudge, TCS Secretary







## *Recent Meetings, Conferences and Workshops...*

ICC6  
images





## Recent Meetings, Conferences and Workshops...

### ICC6 Student prize winners

The Crustacean Society (TCS) is pleased to announce the winners of the Best Student Paper and Poster Competition held during the Summer Meeting of the Society at the Sixth International Crustacean Congress, July 17-22, 2005, at the University of Glasgow, Scotland. There were 142 competitors in the fields of phylogeny, decapod mating systems, ecophysiology, fisheries and aquaculture, anomuran crustaceans, behavior, invasive Crustacea, biogeography of marine cave faunas, ecology, diseases of commercial significance, and crustacean larvae. Best Student Oral Presentation Awards were presented to **Arani Chandraparan** (Tasmanian Aquaculture and Fisheries Institute) for a talk entitled "Exploring translocation as a management tool to enhance lobster fisheries" (with co-authors S. Fava and C. Gardner); **Thierry Gosselin** (Institut des Sciences de la Mer de Rimouski and Institut Maurice-Lamontagne, Pêches et Océans Canada) for a talk entitled "Female pre- and post-copulatory mate choice in the promiscuous snow crab *Chionoecetes opili* (Brachyura, Majidae)" (with co-authors B. Sainte-Marie and J-M Sévigny); **Oi Shing Hung** (Hong Kong University of Science and Technology) for a talk entitled "Do effects of ultraviolet radiation on microbial films have indirect effects on crustacean larval settlement?" (with co-authors L. A. Gosselin, V. Thiyagarajan, R. S. S. Wu, and P. Y. Qian); **Fiona A. Kavanagh** (National University Ireland Galway) for a talk entitled "Heterochrony in the deep-sea: new species of Ischnomesidae exhibit progenesis" (with co-authors G. D. F. Wilson and A. M. Power); **Wan-Jean Lee** (National University of Singapore) for a talk entitled "Spatial and temporal patterns of recruitment and population dynamics of the intertidal barnacle *Chthamalus malayensis* on equatorial Southeast Asian shores" (with co-authors R. M. O'Riordan and Koh); **Christian Wirkner** (Friedrich-Schiller-Universität, Jena, Germany) for a talk entitled "The circulatory systems in Peracarida: phylogenetic implications" (with co-author S. Richter). Best Student Poster awards were presented to **Oleg Gusev** (Okayama University, Japan) for a poster entitled "Molecular properties and evolution of new serine protease involved in slipping of the egg cases in decapod crustaceans" (with co-authors H. Ikeda, Y. Hirano, J. M. Lee, M. Hatakeyama, and M. Saigusa); **Taku Sato** (Hokkaido University, Japan) for a poster entitled "Effects of male mating frequency and male size on ejaculate size and reproductive success of female spiny king crab *Paralithodes brevipes*" (with co-authors M. Ashidate, S. Wada, and S. Goshima);

**Kareen E. Schnabel** (National Institute of Water and Atmospheric Research, Wellington, NZ) for a poster entitled "Probing the deep: diversity, habitat and distribution of New Zealand shelf and deep-sea Galatheoidea (Crustacea: Anomura)" (with co-authors N. L. Bruce and P. K. Probert); and **Petra Zillner** (Universität Regensburg, Germany) for a poster entitled "The evolution of protandric simultaneous hermaphroditism in the shrimp genus *Lysmata* (Caridea: Hippolytidae)" (with co-authors R. T. Bauer and C. D. Schubart). Each award consists of a certificate, US\$50, and a one-year membership in The Crustacean Society, including subscription to *The Journal of Crustacean Biology*. TCS thanks those members who served as judges and all student participants.



### American Lobster Shell disease workshop March 2005

Proceedings available

Electronic copies of the proceedings of the American Lobster Shell disease workshop held in March 2005 at the University of Massachusetts Boston are now available from Michael Tlusty - [mtlusty@neaq.org](mailto:mtlusty@neaq.org). (The file size is 4.7meg) Tlusty, M.F., Halvorson, H.O., Smolowitz, R., and Sharma, U. (eds.) 2005. Lobster Shell Disease Workshop. Aquatic Forum Series 05-1. New England Aquarium, Boston, Massachusetts. 189 pgs.

This publication is provided free of charge by generous donations from Darden Restaurants and the Sudbury Foundation.



## ***Upcoming Meetings, Conferences and Workshops...***

### **Annual meeting of the Carcinological Society of Japan** 11-12 November, 2005 Nara, Japan

Annual meeting of the Carcinological Society of Japan is planned on 11 and 12 November 2005 at Nara Women's University in Nara, Japan. A symposium and general sessions for contributed papers by oral or poster presentation of all areas of crustacean research are planned. Anyone who has interests in all areas of crustacean biology is welcomed to participate. Registration can be made by contact to a chairperson:

Prof. Keiji Wada, Department of Biological Sciences, Faculty of Science, Nara Women's University, Nara 630-8506, Japan (email: mbanzai@cc.nara-wu.ac.jp)(tel. & FAX:+81-(0)742-20-3415).

<http://www.nara-wu.ac.jp/index-e.html>

Nara Women's University is located near Kintetsu Nara Station of the Kintetsu Railway Line. The airport nearest to the university is Itami Airport or Kansai International Airport (limousine bus to Kintetsu Nara Station is available from the both airports).

See the following web site for access to the university from the airports: [http://koto.nara-wu.ac.jp/gakusei/ryugaku/NWU\\_GFS/information.html](http://koto.nara-wu.ac.jp/gakusei/ryugaku/NWU_GFS/information.html)

Information on the airports: <http://www.kansai-airport.or.jp/english/index.htm>

### **TCS "Winter" and SICB 2006 Annual Meeting** January 4-8, 2006 Orlando, Florida

In Orlando, TCS will co-sponsor a symposium entitled "Genomic and proteomic approaches in crustacean biology" organized by Don Mykles and David Towle. Other symposia of interest will include "Integrating function over marine life cycles", "Metamorphosis: a multi-kingdom approach", and "Ecophysiology and conservation: the contributions of energetics."

As in the past, TCS will sponsor a Best Graduate Student Oral Presentation competition and a Best Student Poster Presentation competition at the graduate and undergraduate level. TCS will also have a booth in the display hall where members may obtain information on upcoming meetings, membership forms, and purchase TCS T-shirts and hats. TCS will also co-sponsor an evening social with SICB's Division of Invertebrate Zoology.

Registration and additional meeting information can be obtained at the SICB website, [www.sicb.org](http://www.sicb.org).

### **Alaskan Crab Enhancement Workshop** March 14-16, 2006 Kodiak, Alaska

Contact: Sherri Pristash, Alaska Sea Grant College Program. 907-474-6701 or [fyconf@uaf.edu](mailto:fyconf@uaf.edu)

Join with industry, agencies and scientists in a workshop on the potential of crab enhancement in Alaska. On March 14<sup>th</sup>, the world's prominent crab enhancement researchers from Japan, Russia, Norway, Argentina, Maryland and Alaska will conduct a technical workshop on crab enhancement. The next day they will discuss management of stock enhancement, followed by a round table discussion on guiding issues (e.g. Should crab enhancement be attempted? What are the habitat requirements? What techniques and species should be considered? Is crab recruitment limited?). On March 16<sup>th</sup>, a Kodiak ComFish seminar will be scheduled with presentations on cutting edge crab enhancement techniques, case studies, and considerations regarding genetics, pathology, habitat, and which species should be considered for enhancement. The discussion to follow will encourage audience participation.

For more information or to be included on a mailing list for the meeting announcement, please contact Sherri Pristash at the phone or email listed.

### **The Annual Meeting of the National Shellfisheries Association** Monterey, CA, March 27-31, 2006

A session on Crustacean Biology and Fisheries is being organized by Rich Childers, [childrkc@dfw.wa.gov](mailto:childrkc@dfw.wa.gov).

### **The Annual Meeting of the Eastern Fish Health Workshop** Charleston, SC, March 27-30, 2006

A session entitled Advances in crustacean health and disease is being organized by Lou Burnett, [burnettl@cofc.edu](mailto:burnettl@cofc.edu), Karen Burnett, [burnetkg@musc.edu](mailto:burnetkg@musc.edu), and Erin Burge, [BurgeE@cofc.edu](mailto:BurgeE@cofc.edu).



## Upcoming Meetings, Conferences and Workshops...

### TCS Annual Summer Meeting in Juneau, Alaska May 22-26, 2006



Please mark your calendars for the Annual Summer Meeting for the Crustacean Society that will be held Juneau Alaska from May 22-26, 2006. We are still reviewing bids for post meeting attractions and tours and will send out that information as soon as it is available. It is never too early to start planning your trip.

**Symposia:** This first meeting announcement will serve as a call for symposia. We have one confirmed symposium on Glacier Bay crab populations, but are open to potential symposia of interest. Please submit your potential symposium title to: [sherry.tamone@uas.alaska.edu](mailto:sherry.tamone@uas.alaska.edu) by October 31<sup>st</sup>, 2005. The symposium organizing committee will meet soon to develop the agenda.

**Abstracts:** A call for abstracts will go out in early February and you will be able to submit your abstract through the TCS summer meeting website. ([www.uas.alaska.edu/biology/tamone/tcs](http://www.uas.alaska.edu/biology/tamone/tcs))

**Registration:** Registration is not yet open. See the TCS Summer Meeting website for updates including registration and abstract forms. For more information contact Sherry Tamone, Department of Natural Sciences, 11120 Glacier Highway, Juneau, AK (907) 796-6599 [sherry.tamone@uas.alaska.edu](mailto:sherry.tamone@uas.alaska.edu).

**Venue:** The meeting will be held at the Centennial Hall in Juneau. There will be ample room for presentations, posters, and social activities including coffee, tea, and refreshments. Centennial Hall is located in downtown Juneau and within walking distance of local attractions and hotels.

**Accommodations:** Blocks of rooms have been reserved at two local hotels:

The Driftwood Lodge

435 Willoughby Ave  
Juneau AK 99801  
(800) 544-2239  
[www.driftwoodalaska.com](http://www.driftwoodalaska.com)  
\$89.00-119.00 + tax

There are 2 bedroom apartments for \$119. Check website for room descriptions

The Prospector Hotel

375 Whittier Street  
Juneau, AK 99801  
(800) 331-2711  
[www.prospectorhotel.com](http://www.prospectorhotel.com)  
\$109-\$149 + tax

Mention that you're with The Crustacean Society meeting to receive convention rates. Both hotels are located in downtown Juneau within walking distance of the meeting facilities, restaurants, museums, and great hiking.

**Travel:** Alaska Airlines flies into Juneau and there are approximately three flights from either Seattle or Anchorage each day. Check [www.alaskaair.com](http://www.alaskaair.com) for flight times and reservations.

Juneau is the only state capital that can be accessed only by air or by sea. This fact is not without controversy in this city embedded between the Inside Passage and steep mountains. Juneau is a historical gold town; an important port for commercial and sport fishing, and a destination for hundreds of thousands of tourists annually. Juneau is surrounded by breathtaking beauty and the local hiking and sightseeing is unrivaled.

**Attractions:** We will organize a special catamaran cruise at reduced rates at the end of the meeting. The cost of this all day cruise will be announced upon confirmation. On this trip we will visit hanging and tidewater glaciers, have an opportunity to observe wildlife including marine mammals (humpback whales, harbor seals, porpoises and Stellar Sea lions), bears, mountain goats, and eagles, and enjoy a day on the water. A hearty lunch is included.

Alternative attractions include a scenic tram ride up Mt. Roberts from which one can appreciate views of downtown Juneau and the Inside Passage. You will be able to see as far as the Chilkat Mountains on a clear day. Sport fishing is a popular attraction for locals and tourists. Charter boats are available for half and full day excursions. Helicopter tours of the Mendenhall Icefield offer an adventurous view of the nearby glaciers. Our next announcement will provide pricing information for all of these activities.

*continued...*





## Upcoming Meetings, Conferences and Workshops...

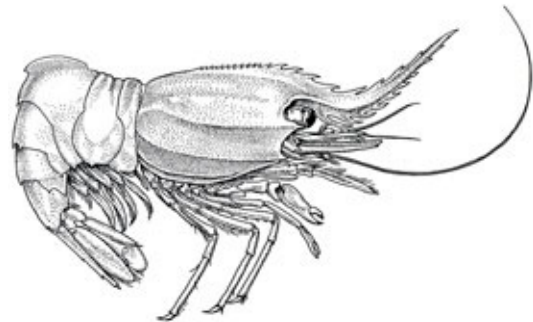
Alternative attractions include a scenic tram ride up Mt. Roberts from which one can appreciate views of downtown Juneau and the Inside Passage. You will be able to see as far as the Chilkat Mountains on a clear day. Sport fishing is a popular attraction for locals and tourists. Charter boats are available for half and full day excursions. Helicopter tours of the Mendenhall Icefield offer an adventurous view of the nearby glaciers. Our next announcement will provide pricing information for all of these activities.

**Weather** The weather is usually the topic of discussion in Juneau. Our best weather occurs during May and June and one can expect cool sunny days (55°F), but not be surprised by clear and sunny 75°F days or stormy rainy 50°F days. Juneau is a temperate rainforest, which by definition includes a lot of precipitation. Last May was one our warmest on record. Pack sensibly with some rain protection and good walking shoes.

### THE 8<sup>th</sup> LOBSTER CONFERENCE IN CHARLOTTETOWN, PRINCE EDWARD ISLAND September 2007

Mark your calendars! The 8<sup>th</sup> International Conference and Workshop on Lobster Biology and Management will be co-hosted by the Prince Edward Island Department of Agriculture, Fisheries, Aquaculture & Forestry and the Atlantic Veterinary College, Lobster Science Centre. It will be held in Charlottetown, Prince Edward Island, in September 2007.

Contact Jean Lavallee, [jlavallee@upe.ca](mailto:jlavallee@upe.ca), for more details.



### SICB SYMPOSIUM REQUESTS

This year, TCS is co-sponsoring a symposium at SICB entitled Genomic and Proteomic Approaches in Crustacean Biology. The symposium has been organized by Donald Mykles and David Towle, and has been co-sponsored by The Crustacean Society, DCPB, DIZ, and DNB.

If you would like to organize a symposium for SICB, please contact our TCS-SICB liaison, Brian Tsukimura: [briant@csufresno.edu](mailto:briant@csufresno.edu), and our TCS Program Officer, Christopher Boyko: [cboyko@amnh.org](mailto:cboyko@amnh.org).





## ***Upcoming Meetings, Conferences and Workshops...***

### **TCS Mid-Year Meeting 14-19 October 2007 Coquimbo, Chile**

**Plan ahead!** TCS is very happy to announce that our Mid-Year Meeting in 2007 will be held in October (14-19 October 2007) in Coquimbo-La Serena, Chile, organized by the Universidad Católica del Norte in Coquimbo, Chile. English will be the official language of the conference for both oral and poster presentations. One conference day will be set aside for collecting trips and classrooms with microscopes will be available. English-speaking student guides will also be available for additional sampling trips during the post-conference weekend.

The Coquimbo-La Serena region (~ 300,000 inhabitants) is one of the most famous tourist areas in Chile, located 470 km to the north of Santiago, on a beautiful sheltered bay of the Pacific Ocean. Its warm weather, fresh air, and beautiful landscapes make this region one of the best places in Chile to live. La Serena is on the Elqui River, with active commercial and agricultural centers in a region of orchards and vineyards. La Serena was founded in 1543, a city of Old World charm and noted for its churches, fine buildings, and gardens. Coquimbo is 10 km from La Serena, a lively and fascinating harbor city with diverse and fresh seafood. Universidad Católica del Norte is located on the southwestern shore of Coquimbo peninsula at the historic La Herradura Bay, where both Sir Francis Drake and the crew of the Beagle once anchored.

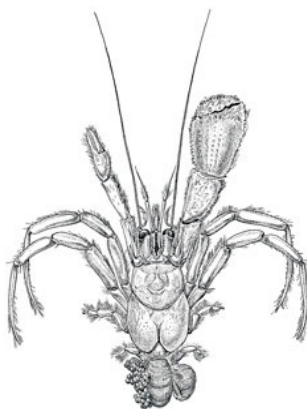
The conference will be held at a four-star hotel, the Serena Club Resort, right in front of the beach (cost will range from US\$50 for a single room to US\$70 for a double). The hotel is located on Avenida del Mar, the scenic coastal road along the beautiful beaches between La Serena and Coquimbo. It is a perfect place for all those who wish to combine business with pleasure! The center of La Serena can be reached in 5 minutes by car, and in 15-20 minutes by walking. Many hotels and cottages are available within 5-minute walking distance from the conference hotel. **To encourage student attendees, a student-host program will be arranged where participating students can stay with local students at no cost (just bring a sleeping bag!).**

The airport is a 10-minute drive to the conference hotel. Following air travel to Santiago, Chile, there are several daily connections to La Florida Airport in La Serena. Bus service is also available.

For further information, please contact Dr. Martin Thiel: [thiel@ucn.cl](mailto:thiel@ucn.cl)

**Organizing Committee:** Dr. Martin Thiel (Chair), Dr. Exequiel R. González and Dr. Pilar Haye (Secretaries), Dr. Enzo Acuña, Mr. Enrique Dupré, Dr. Armando Mujica, Dr. Ingo Wehrtmann.

**Scientific Committee:** Dr. Klaus Anger, Dr. Akira Asakura, Dr. Ray Bauer, Dr. Georgina Bond Backup, Dr. John Christy, Dr. Michel Hendrickx, Dr. Gary Poore, Dr. Les Watling, Dr. Gary Wellborn.





## Recent Publications...

### Crustacea and Arthropod Relationships

Stefan Koenemann and Ronald Jenner (Eds.)

Crustacean Issues Vol. 16

- \* Proposes innovative ideas to reevaluate the phylogeny of major arthropod groups
- \* Discusses the evolution of arthropod eyes in a phylogenetic context
- \* Presents a comprehensive overview of appendage loss and regeneration
- \* Addresses the most recent molecular phylogenetic data, including nuclear and mitochondrial DNA sequences
- \* Provides in-depth discussion of relationships between insects and crustaceans
- \* Offers diverse and innovative approaches to evaluate fossil evidence
- \* Evaluates competing hypotheses for arthropod placement in the animal kingdom based on morphological evidence

Compared to other arthropods, crustaceans are characterized by an unparalleled disparity of body plans. Traditionally, the specialization of arthropod segments and appendages into distinct body regions has served as a convenient basis for higher classification; however, many relationships within the phylum Arthropoda still remain controversial. Can Crustacea even be considered a monophyletic group? If so, then which are their closest relatives within the Arthropoda?

The answers to such questions will play a key role in understanding patterns and processes in arthropod evolution, including the disappearance of certain body plans from the fossil record, as well as incidences of transition from aquatic to terrestrial environments.

Crustacea and Arthropod Relationships, written by a team of internationally recognized experts, presents a wide variety of viewpoints, while offering an up-to-date summary of recent progress across several disciplines. With rich detail and vibrancy, it addresses the evolution and phylogenetic relationships of the Arthropoda based upon molecular, developmental, morphological, and paleontological evidence.

**List Price:** \$149.95

**Cat. #:** 3498

**ISBN:** 0849334985

**Publication Date:** 4/27/2005

**Number of Pages:** 440

### Milwaukee Public Museum publications

The following Milwaukee Public Museum publications in its Contributions in Biology and Geology series are currently available:

- No. 94. 2000. **Atlas and bibliography of the first state and county records for anostracans (Crustacea: Branchiopoda) of the contiguous United States.** 158 pp.
- No. 95. 2001. **Terrestrial isopod (Crustacea: Isopoda) atlas for Canada, Alaska, and the contiguous United States.** 105 pp.
- No. 97. 2002. **Minnesota and Wisconsin fairy shrimps (Crustacea: Branchiopoda: Anostraca) including information on other species of the Midwest.** 51 pp.
- No. 100. 2004. **Terrestrial isopod (Crustacea: Isopoda) atlas for Mexico.** 77 pp.

Each publication is priced at \$6.00 and may be obtained by writing to the Museum Shop, Milwaukee Public Museum, 800 West Wells Street, Milwaukee WI 53233.

Orders must include \$3.00 for shipping and handling (\$4.00 for foreign destinations) and must be accompanied by money order or check drawn on U.S. bank. Money orders or checks should be made payable to the Milwaukee Public Museum, Inc. Wisconsin residents please add 5% sales tax.

### DVD-ROM "Zooplankton of the South Atlantic Ocean"

available at [www.etiis.org.uk](http://www.etiis.org.uk)

"Zooplankton of the South Atlantic Ocean" was built with the Linnaeus II data management system, which consists of an indexed taxonomic (multimedia) database system, coupled to computer-aided identification modules, interactive geographic information system, literature and glossary database in one Windows and Macintosh compatible environment. Linnaeus II builder software can be downloaded free of charge for academic use (<http://www.eti.uva.nl/products/linnaeus/obtain.php>). In addition there is a "runtime" version for publishing compact disks and a "web publishing" version for making information available on the web (see for examples: [http://www.nlbif.nl:8080/Services/search\\_species](http://www.nlbif.nl:8080/Services/search_species)).

- Higher taxa treated: 1,370
- Species treated: 2,688
- Keyed out: nearly 1,400 taxa in 18 major groups
- Illustrations: ± 10,000
- Literature references: 3,345
- System size: 3.5 Gigabytes



## Recent Publications...

### Biological Field Techniques for Lithodid Crabs

William Donaldson and Susan Byersdorfer

The harvest of Alaska king crabs in the North Pacific and Bering Sea reaches about 18 million pounds per year, one-tenth of the bonanza 1980s catch. While king crab stocks are recovering from the crash, efforts such as this book on standardizing data collection promise to further improve fishery management. Topics include taxonomy, life history, distribution, anatomy, and diseases. Geared to shellfish researchers, fishery observers, shore-side samplers, and fishermen, the book is illustrated with line drawings, maps, and numerous color photos, and it is printed on waterproof paper.

The authors are expert crab biologists at Alaska Department of Fish and Game, the agency responsible for managing the crab fishery.

Pub. no.: AK-SG-05-03

Year: 2005

No. pages: 82

Price: \$20.00 US

ISBN: 1-56612-092-6

Order online at <http://www.uaf.edu/seagrant/bookstore/pubs/AK-SG-05-03.html> (credit card) or phone in your order toll free at (888) 789-0090 (USA only).

## Upcoming Publications...

### Crustacean Nauplii

Hans-Uwe Dahms

Crustacean Issues: Volume 17

List Price: \$149.95

Cat. #: 3562

ISBN: 0849335620

Publication Date: 5/15/2006

Number of Pages: 300

### The Biology and Fisheries of the Slipper Lobster

Kari L Lavalli and Ehud Spanier

Crustacean Issues

List Price: \$169.95

Cat. #: 3398

ISBN: 0849333989

Publication Date: 8/15/2006

Number of Pages: 448

## Recent Research...



### The ANDEEP III expedition: ANtartic benthic DEEP-sea biodiversity - colonization history and recent community patterns

This expedition took place between January 22 and 6 March 2005 on the R/V Polarstern. An introduction to ANDEEP was presented in the November 2004 issue of the Ecdysiast.

The specific objectives of the ANDEEP surveys are 1) to conduct the first comprehensive survey of megafaunal, macrofaunal and meiofaunal deep-water communities in the Scotia and Weddell seas; 2) to investigate the similarity of the Scotia and Weddell Sea faunas at the taxonomic (morphological) and genetic (molecular) levels (to the faunas of Atlantic basins, on the one hand, and Antarctic shelf on the other); 3) to describe the variety of seafloor habitats in tectonically active and inactive regions and to determine the influence of 'habitat diversity' on species and genetic diversity over a variety of spatial scales; 4) to determine the importance of life history strategies and larval biology in determining species distributional patterns and geographical ranges; 5) to investigate the evolutionary processes that have resulted in the present biodiversity and distributional/zoogeographical patterns in the Antarctic deep sea; 6) to investigate the colonisation and exchange processes of the deep-sea fauna, in particular the role of tectonic structures (for example ridges or seamounts).

Samples collected during the three ANDEEP expeditions have provided, for the first time, a firm basis for addressing these questions. In a broader sense, ANDEEP expeditions may enhance our understanding of some important general issues in deep-sea biology. The project will certainly provide a wealth of new information about the scale and patterns of species diversity in the deep ocean, add to our knowledge of deep-sea species ranges and the relationship between local and regional diversity, and may ultimately lead to a better understanding of the origins of faunas inhabiting these remote regions. It has particular relevance to the controversial issue of global (latitudinal) diversity gradients. There is evidence that diversity decreases from the tropics to the poles in some deep-sea taxa. Gradients are particularly pronounced in the Northern Hemisphere, a fact that probably reflects the geologically recent origin of the Arctic Ocean. ANDEEP I & II samples and those from ANDEEP III did and will provide a rich

*continued...*





## The ANDEEP III expedition...

### Sampling programme

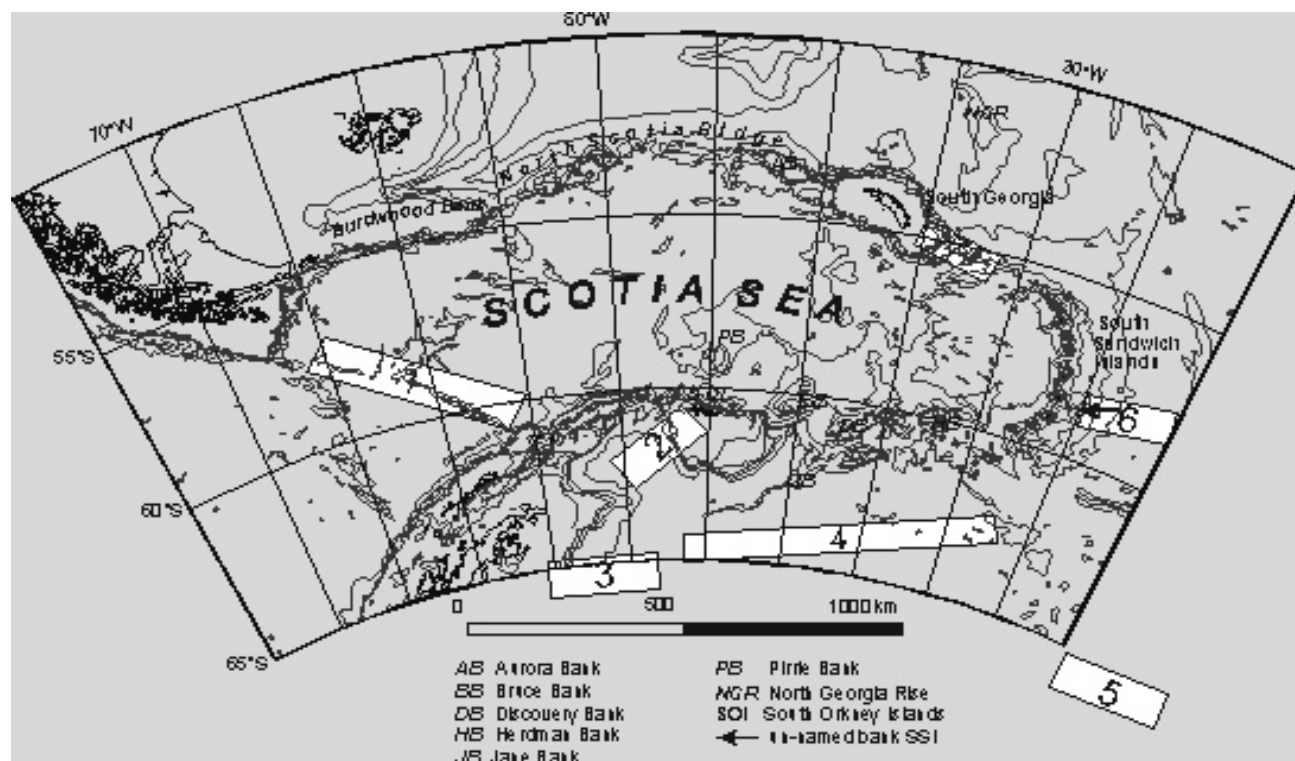
Seven potential target areas were selected for the ANDEEP programme (see figure). During ANDEEP I (ANT XIX-2) and ANDEEP II (ANT XIX-3) target areas 1, 3, 4 (in part) and 6 were investigated. During ANDEEP III (ANT XX-3), target areas 2, and 5 were sampled together with a station transect on the Greenwich Meridian in the Cape, Agulhas and northern Weddell Sea Basins. It was also possible to sample some additional sites not envisaged in the original cruise programme; these were located on the NE Peninsula slope, the Bransfield Strait, and in the Bellingshausen Sea off Anvers Island.

As in the case of ANDEEP I and II, a variety of sampling gears was used during ANDEEP III to collect animals of all different size classes living in and on the sea floor. A CTD profile of the water column was obtained at the beginning of each biological station. The sediment profile imaging system (SPI) was then deployed in order to obtain still photographs and video footage of the surface of the seafloor and profiles through the sediment-water interface and upper sediment layers. Next, two multi-corers (57 mm and 100 mm tube diameter) and two box corers were used to recover sediment samples of different, but well defined surface areas together with the overlying bottom water. The multi-cores were used principally for the smallest size fraction, the meiofauna (32-300  $\mu\text{m}$  size range), and for the characterisation of sediment parameters.

The box corers were used mainly to sample the macrofauna (size class  $>300 \mu\text{m}$ ). Two other biological sampling devices were towed across the bottom and obtained material from a much larger but less well-defined area of seafloor. The epibenthic sledge was used for the macrofauna and the Agassiz trawl for the larger animals, the megafauna. Additionally, a baited trap was deployed at the beginning of each ANDEEP station to attract and catch scavenging animals, mainly amphipods, not usually collected by other gears. It was recovered approximately 48 hrs later at the end of the station work.

Data from the Southern Ocean deep sea has shown that, in very general terms, the Crustacea do not differ too much in composition at a higher taxonomic level from that of other deep-sea regions of the World oceans. Nevertheless, many, if not most, of the macrofaunal species are new to science. For example, Southern Ocean deep-sea Isopoda show a high degree of endemism, probably due to the negligible sampling effort in the Southern Ocean deep sea in the past. The brooding Peracarida were characterised by a high diversity including many rare and new species, and only very few of the species were known from other deep-sea basins.

Submitted,  
Angelika Brandt, TCS European Governor





### **The Latin America Crustacea mailing list**

After a very successful meeting of the carcinologists from Latin America at the COLACMAR (Congreso Latinoamericano de Ciencias del Mar; 16 – 20 May 2005) congress in Viña del Mar, Chile (see this issue for more details), the ALCA-mailing list (a Spanish language mailing list dealing with Crustacea) has grown to ca. 290 members. Many new members were recruited during the meeting, particularly young scientists and graduate students. As it stands, the list now includes 36 members from Argentina, 37 from Brasil, 46 from Chile, 60 from Mexico, 12 from Venezuela and a total of 30 from other Latin America countries (Colombia, 8; Costa Rica, 6; Cuba, 3; Ecuador, 1; El Salvador, 5; Peru, 2; Republica Dominicana, 1, Uruguay, 4). In addition to Latin America members, the list also includes 14 members from the USA, 2 from Canada and 16 from Europe (Germany, 5; Belgium, 1; Spain, 8; France, 1; Portugal, 1). A total of 14 members, using international mailing system available in Latin America were not yet accounted for in these totals. The aim of the list is to recruit new members, particularly students interested in crustaceans, in countries where communication problems are particularly adverse. Since May, 2005, the list, based in Mazatlán Sinaloa, Mexico, is offering an “emergency” service of copies of scientific papers on crustaceans (mostly through PDF files) for Latin America members who are facing critical problems with literature availability, with priority for documents needed to complete a manuscript or a thesis. Although “traffic” in the ALCA mailing list is not very high, it is expected to grow in the next months with the increase of members. All colleagues interested in joining the ALCA mailing list should contact me at [michel@ola.icmyl.unam.mx](mailto:michel@ola.icmyl.unam.mx)

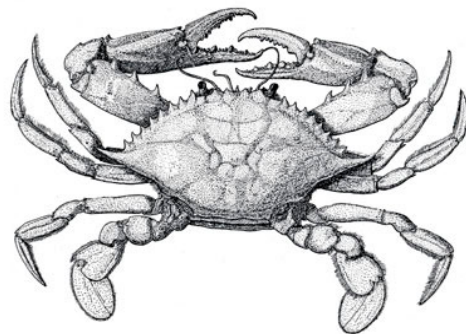
Submitted, Michel E. Hendrickx TCS Latin American Governor

### **New “Tree of Life” Grant to Investigate Decapod Relationships**

Using a new “Assembling the Tree of Life” grant from the U.S. National Science Foundation that begins this fall, several members of The Crustacean Society are involved in a large-scale effort to try to resolve the relationships among the decapod crustaceans. We will be using a combination of molecular, morphological, and paleontological characters and would very much appreciate your input, suggestions, and help!

The labs involved are those of Keith Crandall (Brigham Young University), Darryl Felder (University of Louisiana at Lafayette), Jody Martin (Natural History Museum of Los Angeles County), and Rodney Feldmann and Carrie Schweitzer (Kent State University). Over the next several years, we will be trying to collect, examine, and sequence representatives of as many decapod families and genera as possible, which is obviously a huge task. To do this, we plan to visit colleagues and museums around the world, and we would of course welcome freshly-collected specimens (especially of rare or hard to find decapod taxa) or specimens preserved in 95% ethanol from which we could extract tissues for sequencing. We would also be grateful for comments and suggestions you might have as to which morphological characters (both extant and fossil) and which molecular markers have worked for you in previous attempts to make sense out of the decapods at various taxonomic levels.

Please contact Dr. Keith Crandall at BYU ([keith\\_crandall@byu.edu](mailto:keith_crandall@byu.edu)) if you have any questions about our work, would like to contribute in some way, or want to share ideas that you think would be helpful. In advance, colleagues, thanks for your help and support!





## **TCS Graduate Student Fellowship Program**

The Crustacean Society Board is pleased to solicit applications by graduate students for The following monetary fellowships:

- **The Denton Belk Memorial Scholarship in Graduate Studies** (\$1500);
- **The Crustacean Society Fellowship in Graduate Studies** (3 awards of \$1000 each in the areas of (1) crustacean ecology and/or behavior; (2) crustacean population genetics and/or physiology; and (3) crustacean systematics, biogeography, and/or evolution.

All fellowships/scholarships will support the awardee's research program and are limited to: supplies, travel for research, participation in off-campus research experience or training, or a specialized course of study to advance the awardee's knowledge and skills. Selection of the awardee is based on the relevance of the request ("candidate's statement") to the applicant's educational and research goals and a letter of support/recommendation from the applicant's major professor or mentor. Scholarships are awarded annually and may be received only once per awardee. Unsuccessful applicants may re-apply in subsequent years.

Please note: applicants for The Denton Belk Memorial Scholarship in Graduate Studies must be conducting or proposing research that specifically targets large branchiopod crustaceans (e.g., Anostraca, Notostraca, Conchostraca).

Currently enrolled graduate students working on either a MS or PhD degree may apply by completing and sending the appropriate application form and required documentation (CV, letter of support, and candidate's statement) to:

Dr. Trisha Spears  
Crustacean Society Awards Committee  
Department of Biological Science  
Florida State University  
Tallahassee, Florida 32306-1100 USA

For questions: [spears@bio.fsu.edu](mailto:spears@bio.fsu.edu)

**DEADLINE FOR SUBMISSION: February 15th, 2006**

Please note: The applicant and his/her major professor or mentor must both be current members of The Crustacean Society at the time of application.



**THE CRUSTACEAN SOCIETY  
FELLOWSHIP IN GRADUATE STUDIES**

**2006 APPLICATION**

The Crustacean Society (TCS) annually awards one \$1500 Denton Belk Memorial Scholarship in Graduate Studies (focusing on large branchiopod research) and up to three \$1000 fellowships in graduate studies on crustaceans, one each in the areas of (1) population genetics and physiology, (2) ecology and behavior, and (3) systematics, biogeography, and evolution.

**DEADLINE FOR APPLICATION: 15 FEBRUARY, 2006**

Please return completed application and supporting materials to:

Dr. Trisha Spears  
The Crustacean Society Awards Committee  
Department of Biological Science  
Florida State University  
Tallahassee, FL 32306-1100

Name: \_\_\_\_\_

Mailing address: \_\_\_\_\_  
\_\_\_\_\_

E-mail: \_\_\_\_\_ FAX: \_\_\_\_\_

Home phone: \_\_\_\_\_ Lab/work phone: \_\_\_\_\_

Type of degree currently pursuing (please check one): \_\_\_\_\_ Master's \_\_\_\_\_ PhD

Current year of graduate study: \_\_\_\_\_ Expected date of degree: \_\_\_\_\_

I am applying for (please check one):

\_\_\_\_\_ The Denton Belk Memorial Scholarship in Graduate Studies

\_\_\_\_\_ The TCS Graduate Studies Fellowship (population genetics and/or physiology)

\_\_\_\_\_ The TCS Graduate Studies Fellowship (ecology and/or behavior)

\_\_\_\_\_ The TCS Graduate Studies Fellowship (systematics, biogeography, and/or evolution)

**\*\*\* PLEASE ATTACH A COPY OF YOUR CV AND A SUPPORTING LETTER FROM EITHER YOUR MAJOR PROFESSOR OR ANOTHER MENTOR IN YOUR FIELD OF RESEARCH.**

**\*\*\* PLEASE NOTE: BOTH THE APPLICANT AND THE MAJOR PROFESSOR (OR MENTOR) MUST BE CURRENT MEMBERS OF THE CRUSTACEAN SOCIETY AT THE TIME OF APPLICATION.**

**CANDIDATE'S STATEMENT:**

Attach a brief statement (no more than two single-spaced typed pages) summarizing your research objectives and program and specifically describing how this fellowship will contribute to your research and to your ultimate career goals. A short description of the budget for which this fellowship will be used must be included within the two-page statement.

Please also attach an official description or announcement of the course, field experience, workshop or training program if the fellowship will be used (either in total or in part) for this type of activity.



## ***TCS Board Elections, 2005***

The Crustacean Society officers and governors serve for two-year terms, half being elected each year. The term of the President and President-Elect is limited to two years but other officers and governors may serve multiple terms. Four offices are now open for the period 2006-2007, the positions of **President-Elect**, **Program Officer**, **Asian Governor** and **Latin American Governor**. Brief biographies of the nominee or nominees for each office are given below. You may vote either by email or by the ballot attached at the end of this newsletter. Email is the preferred method as it expedites the process. Please take the time to vote for the candidates nominated or you may write-in a candidate of your choice. Voting will close on **30 December 2005**.

To vote by email, please type "TCS 2005 Ballot" in the subject line and send your votes to Jeff Shields at jeff@vims.edu. Please limit the message field to:

**President-Elect:**     name  
**Program Officer:**   name  
**Asian Governor:**    name  
**Latin American Governor:** name

To vote by regular mail, please mark your ballots and return them to: TCS 2005 Elections, Care of: Dr. Jeff Shields, President-Elect, The Crustacean Society, Environmental Science Department, Virginia Institute of Marine Science Gloucester Pt., VA 23062.

### **Biographies of the nominees**

#### **Rafael Lemaitre**

Born in Cartagena, Colombia, and moved to the USA in 1976 where he is a naturalized citizen. Currently he is Chair of the Department of Invertebrate Zoology, National Museum of Natural History, Smithsonian Institution, Washington, D. C., where he has been Research Zoologist/Curator since 1989. His degrees include: B.S. (1978), Biólogo Marino, Fundación Universidad Jorge Tadeo Lozano, Bogotá, Colombia; M.S. (1981), Environmental & Urban Systems, Florida International University, Miami; and Ph.D. (1986), Biological Oceanography, University of Miami. His research interests include the taxonomy, and systematics of decapod crustaceans in general, and of paguroids in particular. He has been involved over the years in field studies of the crustacean fauna from the Caribbean, and in worldwide systematic studies of the deep-water hermit crabs of the family Parapaguridae. He is a founding member of *TCS*; has previously served as North American Governor, and is currently associate editor of *JCB*. He serves in the editorial board of various international journals, and has served in various capacities in professional societies such as the *Biological Society of Washington*. His publication record includes 71 peer-reviewed papers, in addition to many abstracts, edited volumes, technical reports, popular articles, obituaries or biographical reports, and book chapters and professional presentations at scientific meetings or universities. He was elected Fellow, American Association for the Advancement of Science (2002), and has been adjunct faculty in the Biology Department, University of Louisiana, Lafayette, since 1994.

#### **Christopher Boyko**

Chris Boyko was born in Syracuse, NY and has been interested in marine biology since childhood. He received his B.S. in Biology from the State University of New York at Binghamton; his M.S. in Marine Biology from the University of Massachusetts at Dartmouth; and his Ph.D. in Biological Sciences from the University of Rhode Island. His interests include the taxonomy, ecology, and phylogenetic systematics of crustaceans, with a growing appreciation for the diverse world of the parasitic Crustacea. He is also interested in the biodiversity of invertebrates in general and has headed or participated in invertebrate surveys in coastal Georgia, USA, and on Easter Island in the south Pacific Ocean. He has published over 50 papers on a variety of invertebrate subjects, presented at national and international scientific meetings, and has served as a consultant for the American Museum of Natural History (AMNH), the Newark Museum, the Institute for Exploration at Mystic Aquarium, CT, and the Yale Peabody Museum. He currently teaches at both the City College of New York and York College and is a Research Associate at the AMNH. He is married and lives in Astoria, NY. In what little there is of his spare time, he collects original comic book artwork and has written articles and edited books on the subject including "The Comic Art Price Guide."

*continued...*



# ***TCS Board Elections, 2005***

## **Biographies of the nominees**

### **Akira Asakura**

Dr. Akira Asakura received a Dr. Sci. in 1987 from Kyushu University, working on population dynamics of hermit crabs. He developed a second major interest, the systematics of hermit crabs, after he occupied a permanent position in the Natural History Museum and Institute, Chiba in 1989. His research interests range broadly across ecology, biogeography, systematics and environmental sciences, focusing on crustaceans and other invertebrates. He was a leader of the Japan - USA - Commonwealth of the Northern Mariana Islands Collaborative Expedition to the Northern Mariana Islands, Micronesia, in 1992 and the Chairman of the Organizing Committee for the International Symposium on Natural History of the Izu-Ogasawara-Mariana Arc in 1995. He has visited over 20 natural history museums all around the world for his research. He has attended in 13 international congresses or meetings, including ICC3 in Brisbane, ICC4 in Amsterdam, ICC5 in Melbourne, ICC6 in Scotland, Senckenberg Symposium on Decapods in Frankfurt, ECC4 in Lodz, Poland, the TCS Summer Meeting in Lafayette and Williamsburg. He serves on the Board of the Council of the Carcinological Society of Japan as well as the boards of the Executive Committees of the Japanese Society of Biological Scientists, and the Japanese Association of Benthology. In the International Crustacean Council at Melbourne 2001, ECC4 in Lodz, and ICC6 in Scotland, he acted as the official representative of the Carcinological Society of Japan. In addition to his ca. 100 papers, he was the Editor-in-Chief of the Japanese Journal of Benthology and is currently the Editor-in-Chief of Crustacean Research Special Number and "Taxa", Proceedings of the Japanese Society of Systematic Zoology, as well as a frequent reviewer for several international journals, and an editor for several scientific books.

### **Michel Hendrickx**

Dr. Michel E. Hendrickx is a tenured researcher and postgraduate program teacher at the Unidad Académica Mazatlán, Instituto de Ciencias del Mar y Limnología, UNAM (Mazatlán, Mexico), where he has worked since 1977. A UNESCO/UNDP associate expert in Marine Sciences (1977-1981) assigned to Mazatlán, he joined UNAM in March 1981. Prior to this, he spent two years at the Phuket Marine Biological Center, Thailand. Dr. Hendrickx is the author of more than 150 research publications and 6 books, including monographs on stomatopod and decapod crustaceans of the Pacific coast of Mexico and chapters dealing with commercial crustaceans from the eastern tropical Pacific (FAO, 1995). Since 2002, he has edited a series of books on Crustaceans from the East Pacific, with contributions in Spanish and English from academics from Chile to Canada. He has been the Chief-scientist of fourteen research cruises aboard the R/V El Puma of the UNAM, and collected material from the continental shelf and slope in the Gulf of California. He is also the founder and curator of the Invertebrates Reference Collection in Mazatlán that contains ca. 6700 lots and is the largest collection on the coast of western tropical America. Dr Hendrickx has been a member of the Sistema Nacional de Investigadores in Mexico since it was founded, he was granted level III in 1997. He has benefited from research grants from the Consejo Nacional de Ciencia y Tecnología, (CONACyT), Mexico, the Comisión Nacional para el Conocimiento y el Uso de la Biodiversidad (CONABIO), and the Dirección General de Apoyo al Personal Académico (DGAPA) UNAM and, as coordinator, from the Secretaría de Medio Ambiente y Recursos Naturales de Areas Protegidas (SEMARNAP). He is presently the administrator of the international forum (internet LIST) for the ALCARCINUS association (Asociación Latinoamericana de Carcinólogos), which hosts ca. 270 members. His areas of research include marine invertebrate communities, the ecology and systematics of crustaceans, marine zoogeography and biodiversity. He studied at the Faculté des Sciences of the Brussels Free University (Brussels, Belgium), where he received a Doctorate in Sciences. Dr Hendrickx was head of the Unidad Académica Mazatlán from 1995 to 2000; he has served on panels and as advisor for CONACyT, CONABIO, Conservation International Mexico, and Consejo Estatal de Ciencias y Tecnología, Sinaloa, Mexico. He is also a Scientific Collaborator of the Belgian Royal Institute of Natural Sciences (Brussels, Belgium).



**BALLOT**  
**The Crustacean Society Elections, 2005**

**Deadline for return of ballots is  
December 30, 2005**

Please indicate your choice of candidate for each of the TCS offices listed below. Fold, staple, affix a stamp, and mail this ballot to Dr. Jeff Shields at the address on the reverse. If you prefer, you may vote via email by placing “**TCS 2005 Ballot**” in the Subject line and sending your selections to Dr. Shields at [jeff@vims.edu](mailto:jeff@vims.edu). See pages 21-22 of this *Ecdysiast* for detailed email voting instructions and for brief biographies of the candidates.

***THANKS FOR TAKING THE TIME TO VOTE!!!***

**President-Elect**

Rafael Lemaitre (unopposed)

Other: \_\_\_\_\_

**Program Officer**

Christopher Boyko (unopposed)

Other: \_\_\_\_\_

**Asian Governor**

Akira Asakura (incumbent, unopposed)

Other: \_\_\_\_\_

**Latin American Governor**

Michel Hendrickx (incumbent, unopposed)

Other: \_\_\_\_\_

Please detach, fold, staple, stamp and mail your ballot.



Fold 2

Place  
stamp here

**TCS 2005 Elections**

*Care of:* Dr. Jeff Shields  
President-Elect, The Crustacean Society  
Environmental Science Department  
Virginia Institute of Marine Science  
Gloucester Pt., VA 23062

Fold 1