

# THE *E*CDYSIAST

*Newsletter of the Crustacean Society*

Volume 15, Number 2

November 1996

## *Message from the President*

This has been an interesting and busy summer. In addition to dodging hurricanes along the southeastern US, I actually had time to write a couple of papers, get some new research projects going, and attend the summer meeting of The Crustacean Society in San Diego. Marie Simovich and Michel Boudrias did a great job in hosting the meeting which was held on the beautiful campus of the University of San Diego. Dr. Bob Hessler seemed pleasantly surprised to receive the Society's Research Excellence Award. This was a joint meeting with the Third International Large Branchiopod Symposium so there was a nice intermingling of paper topics. Although the TCS contributed sessions were a bit small, the TCS component present was lively and appeared to enjoy all the festivities and interactions with colleagues from around the world. One of major themes of the branchiopod symposium that especially interested me was the concerted international effort to protect the ephemeral habitats of branchiopod species. It is apparent that a great deal of information gleaned from research has gone into developing successful public education programs on the importance of branchiopods and their habitats. This topic prompted an impromptu gathering to discuss ecological problems associated with crustaceans.

Such discussions are an invaluable benefit of attending meetings of the Society. The next meeting will be held in Albuquerque and will be the site of the annual TCS board and business meeting. If you have items that you would like to bring up to the membership,

I encourage you to attend and provide input. This is your society and it is very important to me and the Board that you help shape it! Due to the efforts of Les Watling and Tom Wolcott, the Albuquerque meeting provides a new opportunity to present papers in interdivisional topical sessions that mixes contributions from the various affiliate societies of SICB. Although the topics are somewhat limited this year, Tom will be working with SICB organizers to expand the scope of contributed interdivisional topics in the future and to note contributions of the affiliate societies in the abstract brochure. Tom is also organizing a gala soiree for TCS members in Albuquerque so that discussions can become a bit less formal.

Because not all the board members attended the San Diego meeting, the most recent meeting of the TCS Board was conducted by mail. There were a number of topics that the Board discussed and voted on. These are summarized below:

(1) The Board voted to approve that nominations for the Research Excellence Award be submitted to the President at least six months prior to presentation to allow adequate time for distribution, discussion and a vote by the Board.

(2) At the 1995 board meeting, a recommendation was made by Sandra Gilchrist, former chair of the TCS Awards Committee, that the Society consider abolishing the Best Paper Award for an article published in the JCB. Jack O'Brien, current chair of the Awards Committee, has since assembled comments from the

membership for and against the award. Those comments were reviewed by the Board prior to its vote. A majority of the Board members voted to abolish the award.

(3) It was discussed at the Washington, DC and San Diego meetings that TCS needs to encourage student participation at its meetings. One way to do this would be to establish a small discretionary fund for Governors to use in defraying cost of registration by student(s) at a TCS meeting. A majority of the Board voted in favor of establishing this fund.

(4) The Board agreed at the 1995 annual meeting to co-sponsor the International Crustacean Congress in Amsterdam in 1998. This will entail a financial contribution in the amount of \$3000-5000 by TCS. In the past, TCS has contributed various amounts as seed money for summer meetings. That contribution has been given with the idea that profits received would be returned, in part, to the Society. The Board voted in favor of a TCS contribution to the 1998 meeting in Amsterdam. The amount of the contribution has not been decided upon by the Board.

(5) The Board voted to approve the proposal of Dr. Jeff Cambell to host the 1999 summer meeting of TCS in Chattanooga, Tennessee.

(6) The Board voted to approve a proposal from Dr. Gary Poore to host a meeting of TCS in Melbourne, Australia in 2001.

Another item discussed by the Board, but not requiring a vote, was increasing

the visibility of Governors both inside and outside the Society. TCS Governors are a voice for the membership in their region and are active recruiters of new members. They also are vital in assisting the Program Officer to coordinate international meetings. The job of the Governors is not easy, especially for diverse ethnic regions where there are many different languages and systems of communication. The Board will be further discussing the role of the Governors and how the Society can better help the Governors fulfill their duties. In the meantime, if you would

like to learn more about TCS activities in your region or simply want to bring regional issues, suggestions or problems to the attention of the TCS membership, please contact your regional Governor. Their telephone numbers, fax numbers, and email addresses are included in this newsletter (see box below), while their complete addresses are available in the directory published in the May 1996 issue.

I hope to see you in Albuquerque.

Elizabeth Wenner  
TCS President

## Remember to Vote

Please remember to vote and return your completed ballots for the various TCS offices (Treasurer, Secretary, North American Governor, European Governor, and Indo-Pacific Governor) to Jody Martin by the **December 1** deadline! According to Karen Hickey at the TCS Business Office at Allen Press, the fall ballots were mailed to TCS members in early October. If you have not received yours yet, contact her at (913) 843-1221 or [khickey@allenpress.com](mailto:khickey@allenpress.com).



## 1996 Crustacean Society Officers and Board of Governors

*President:* Dr. Elizabeth L. Wenner  
South Carolina Marine Resources Research Institute  
Tel: (803) 762-5050; Fax: (803) 762-5110  
E-mail: [wennere@cofc.edu](mailto:wennere@cofc.edu)

*President-Elect:* Dr. Joel W. Martin  
Natural History Museum of Los Angeles County  
Tel: (213) 744-3440; Fax: (213) 746-2999  
E-mail: [jwmartin@bcf.usc.edu](mailto:jwmartin@bcf.usc.edu)

*Past-President:* Dr. Les Watling  
University of Maine  
Tel: (207) 563-3146 ext. 248; Fax: (207) 563-3119  
E-mail: [watling@maine.maine.edu](mailto:watling@maine.maine.edu)

*Secretary:* Dr. Franklin H. Barnwell  
University of Minnesota  
Tel: (612) 625-5700; Fax: (612) 624-6777  
E-mail: [barnwell@biosci.cbs.umn.edu](mailto:barnwell@biosci.cbs.umn.edu)

*Treasurer:* Dr. Denton Belk  
Our Lady of the Lake University of San Antonio  
Tel: (210) 732-8809; Fax: (210) 732-3943  
E-mail: [dbelk@texas.net](mailto:dbelk@texas.net)

*Program Officer:* Dr. Thomas G. Wolcott  
North Carolina State University  
Tel: (919) 515-7866; Fax: (919) 515-7802  
E-mail: [tom\\_wolcott@ncsu.edu](mailto:tom_wolcott@ncsu.edu)

*Editor, JCB:* Dr. Arthur G. Humes  
Boston University  
Tel: (508) 548-3705 ext. 208; Fax: (508) 548-7295  
E-mail: [hahn@bu-bio.bu.edu](mailto:hahn@bu-bio.bu.edu)

*Asian Governor:* Dr. Ichiro Takeuchi  
University of Tokyo  
Tel: +81-193-42-5611; Fax: +81-193-42-3715  
E-mail: [takeuchi@wakame.ori.u-tokyo.ac.jp](mailto:takeuchi@wakame.ori.u-tokyo.ac.jp)

*European Governor:* Dr. Pierre Noël  
Museum National d'Histoire Naturelle, Paris  
Tel: 33/1.40-79-30-98; Fax: 33/1.40-79-30-89  
E-mail: [pnoel@mnhn.fr](mailto:pnoel@mnhn.fr)

*Indo-Pacific Governor:* Dr. Diana S. Jones  
Western Australian Museum, Perth  
Fax: +61-9-328-8686  
E-mail: [jonesd@muswa.dialix.oz.au](mailto:jonesd@muswa.dialix.oz.au)

*Latin American Governor:* Dr. Elva G. Escobar-Briones  
Instituto de Ciencias del Mar y Limnología UNAM  
Tel: (525) 622.5835; Fax: (525) 616.0748  
E-mail: [escobri@mar.icmyl.unam.mx](mailto:escobri@mar.icmyl.unam.mx)

*North American Governor:* Dr. Dorothy M. Skinner  
Oak Ridge National Laboratory  
Tel: (615) 574-0961; Fax: (615) 575-1274  
E-mail: [skinnerdm@bioax1.bio.ornl.gov](mailto:skinnerdm@bioax1.bio.ornl.gov)

*Editor, the Ecdysiast:* Dr. Timothy D. Stebbins  
City of San Diego  
Tel: (619) 692-4900; Fax: (619) 692-4902  
E-mail: [tds@sddpc.sannet.gov](mailto:tds@sddpc.sannet.gov) or [tds@mwharbor.sannet.gov](mailto:tds@mwharbor.sannet.gov)

*TCS Business Office:* Karen Hickey  
The Crustacean Society, Allen Press  
Tel: (913) 843-1221; Fax: (913) 843-1274  
E-mail: [khickey@allenpress.com](mailto:khickey@allenpress.com)

## From the Program Officer

The Crustacean Society's visibility and identity, and ultimately its utility to the scientific community, come from its journal and its meetings. We can be justly proud of our printed forum, the *Journal of Crustacean Biology*. By keeping a broad focus on all aspects of crustacean biology it has attracted a good reputation and a broad readership. The other major contribution of a society, though, is the more interactive relationships that develop at meetings.

TCS's Summer meetings have the advantage of a tight focus on crustaceans, attracting a self-selected group of specialists. The flip side of this is that we may not attract new attendees — who's going to come unless they already are interested in crustaceans? In contrast, the winter meetings with SICB, the Society of Integrative and Comparative Biology (the prince formerly known as ASZ), attract an extremely broad audience. In view of that, the Board has endorsed the organization of contributed paper sessions along thematic, rather than taxonomic, lines. The advantages of this are several. TCS members can attract a large, diverse audience interested in the same kinds of principles we are using crustaceans to explore. We can expose other scientists to why crustaceans are intrinsically interesting. We can broaden the appeal of our work, and of TCS, by demonstrating that we are "crustacean BIOLOGISTS", not "CRUSTACEAN biologists".

The potential drawbacks of not segregating TCS contributors into their own TCS paper session are simple but not minor: the contribution of TCS to the program of the SICB meetings could get lost from view. How can we maintain and increase TCS's visibility, membership, meeting attendance, and hence value to existing members as well as to the community at large? One small step I'm exploring is flagging papers contributed by affiliate society members at SICB meetings; SICB is currently working on getting little icons for our

papers. But contributed papers will, ideally, blend smoothly into sessions made up of scientists whom common interests have drawn from several places.

Where TCS can really make its mark is in the presentation of Symposia! These are an excellent way to draw out generalizations and synthesis that bring the audience up to speed on the topic, and to foster communication that engenders and synergizes new research directions. They are a forum for demonstrating why crustaceans are interesting organisms, even to non-crustacean specialists, because they are especially suitable subjects or model systems for some kinds of science. Thus, they can be a mechanism for demonstrating what crustaceans can teach us about life on this planet better than, say, mice or cell cultures or computer simulations or...

Please consider what areas of particular interest to you might be fruitful nuclei for TCS symposia! Granted, organizing a symposium is work; it's also very rewarding in terms of forging collaborative links and international recognition of participating scholars. The society's symposium program has been allowed to languish because it elected a new Program Officer while he was busy knocking his noodle in a bicycle accident and thereby getting totally bogged down. This excuse won't last forever, of course, so I am striving to catch up (and learning to say "no"), and hope to serve you more capably in the rest of my term. I apologize for not soliciting your input earlier, and hope you will respond as though I had been encouraging you all year. We've got some meetings coming along at exciting venues that should draw vital audiences.

There is a wealth of potential topics for TCS symposia. We (the Program Officer, his Co-PI/roommate, and collaborators) did some brainstorming and came up with a list of things that we'd love to have turned into symposia by someone familiar with the subject's state-of-the-art:

- (1) Ontogeny of osmoregulation in estuarine species with oceanic larvae.
- (2) Ultraviolet damage and resistance in neustonic crustacean larvae.
- (3) Evolution of mating systems.
- (4) Heavily-exploited species: consequences for their populations and ecosystems.
- (5) Linkages between endocrine state and behavior.
- (6) Invasions by exotic crustacean species.
- (7) Molecular phylogeny of Crustacea.

How about getting together with your crustacean allies and coming up with some more, even better ones? Let me know as soon as you're ready to start rolling. Getting support from granting agencies requires extra lead time, as does getting approval for SICB co-sponsorship at winter meetings, but perks like travel and registration for speakers are worth the extra planning effort.

Please see pages 13-14 of this newsletter for a listing of upcoming meetings and symposia. Also check the TCS Home Page for periodic updates. Let's make these memorable, informative meetings with seminal symposia that will attract more biologists to the study of crustaceans and, of course, to membership in TCS!

Thomas G. Wolcott  
Program Officer  
(Tom\_Wolcott@ncsu.edu)



## Crustacean Biodiversity Survey

The Crustacean Biodiversity Survey is a World Wide Web site that allows users to add their own data in a variety of places and categories. Point your browser (Netscape is the preferred tool) to either <http://www.lam.mus.ca.us/cbs/> or <http://www.nhm.org/cbs/>. Users can add links to other sites, announcements, news, meetings, and even taxonomic information (mostly at the family level) that goes to a searchable database. You do not need to know any "html" or other programming language to add information. Feel free to visit the site and add information, or send any suggestions or comments on ways to improve the site to the editor (Jody Martin) using the comment boxes at the site.

## TCS Home Page

The Crustacean Society Home Page has moved. The page can now be reached as part of the Crustacean Biodiversity Survey (see above). Go to either <http://www.lam.mus.ca.us/cbs/> or <http://www.nhm.org/cbs/> and look for the Crustacean Society at the bottom of the main index page.

## TCS Awards

Several awards were presented at the July 1996 summer meeting in San Diego, California. Dr. Robert Hessler of the Scripps Institution of Oceanography received the Society's Research Excellence Award. President Betty Wenner thanked Dr. Hessler on behalf of the Society and presented him with a plaque symbolizing the award, while several colleagues and/or former students (Les Watling, Buz Wilson, Scott France, and Michel Boudrias) provided a summary of some of the major highlights of Dr. Hessler's remarkable career and contributions to carcinology.

The Best Student Paper Award for the meeting went to Jamie L. King from the University of California at Davis for her paper entitled, "Spatial and Temporal Patterns of Population Genetic Structure in the California Vernal Pool Tadpole Shrimp, *Lepidurus packardii* (Order: Notostraca)." The Best Student Poster Award went to Valter J. Cobo (coauthored with Adilson Fransozo) from the Universidade Estadual Paulista in Sao Paulo, Brasil for his poster entitled, "Sexual Maturity in *Goniopsis cruentata*

(Latreille, 1803) (Brachyura, Grapsidae), on the Paulista North Coast, Brazil." Cathleen P. Davies received an Honorable Mention for her talk (coauthored by M.A. Simovich) entitled, "The Population Genetic Structure of a California Endemic Branchiopod, *Branchinecta sandiegonensis*."

Each of the two student winners will receive a certificate, a cash award of \$50.00, and a one-year membership in TCS, including a subscription to the Journal of Crustacean Biology.

## ASC Announcements

### Cuban Crustaceans

Scientists in the Department of Zoology at the Instituto de Ecología y Sistemática (IES) are interested in identifying collections in North America which house Crustacea specimens of Cuban origin. They are also interested in contacting other scientists whose work involves the study of Caribbean crustaceans, especially Cuban.

Please contact: Dra. Naomi Cuervo Pineda, Subdirectora Zoología, Instituto de Ecología y Sistemática, Carretera Varona Km 3½, A.P. 10800, Capdevila, Boyeros, Habana CUBA (Fax: 537-33-8054). Or if you have any questions, please contact: Elizabeth Hathway, ASC; Tel: (202) 835-9050, Fax: (202) 835-7334, E-mail: [hathwaye@ascoll.org](mailto:hathwaye@ascoll.org).

in locating taxonomic resources. ASC will analyze the data to help governmental agencies assess gaps in our taxonomic knowledge and human resource needs and develop a strategy to fill these gaps. For more information, address inquiries to: TRED, The Association of Systematics Collections, 1725 K Street NW, Suite 601, Washington, DC 20006-1401; Fax: 202-835-7334; E-mail: [tred@ascoll.org](mailto:tred@ascoll.org), or check the TRED out on the web at <http://www.ascoll.org/TRED/>.

### ASC 1997 Annual Meeting

The 1997 ASC Annual Meeting will be held in Atlanta, Georgia, on April 24-26, 1997. The meeting will immediately precede the 1997 meeting of the American Association of Museums. The meeting will be held jointly for the first time with the Association of Science Museum Directors.

The theme of the meeting, "The Collections-Based Mission of Natural History Collections," is meant to focus on the core mission of institutions with natural history collections, which is to maintain those collections for use in research and education of a broad public constituency.

Information on hotels and registration forms will be available shortly from ASC. Please contact ASC at their web site, <http://www.ascoll.org/>, or ask for information by e-mail at [asc@ascoll.org](mailto:asc@ascoll.org).

### TRED

The ASC has been funded by the National Biological Service, in cooperation with five other federal agencies and the Smithsonian's National Museum of Natural History, to develop a Taxonomic Resources and Expertise Directory (TRED). Under this project, ASC is developing two databases: a database of taxonomic experts and a database of research-quality systematics collections and associated information resources. The TRED will be made available over the Internet for use by anyone interested

## Global & Regional News

The following items of interest to carcinologists were submitted or solicited by the TCS Regional Governors and Officers. Contact them directly for further information.

### News from the IWCSG

The Inland Water Crustacean Specialist Group (IWCSG) of the Species Survival Commission of IUCN is nearing the end of the first triennium of its existence (1994-1996). During our first three years of life, group members Denton Belk (Chair), John A. H. Benzie, Keith A. Crandall, Neil Cumberlidge, L. G. Eldredge, J. F. Fitzpatrick, Jr, Michelle Hamer, John R. Holsinger, Alejandro M. Maeda-Martinez, Graziella Mura, Janet Reid, and Boris Sket (with help from Thomas M. Illiffe, James Reddell, and Mary K. Wicksten) revised the Crustacea Section of the 1996 IUCN Red List published this Fall. Some of the other activities of the IWCSG included providing information to the U.S. Fish & Wildlife Service relevant to listing several California anostracans under the Endangered Species Act, working with The Friends of Georgia (U.S.A.) in its efforts to protect the habitat of the Stone Mountain fairy shrimp, and providing seed money for the Third International Large Branchiopod Symposium held in San Diego during July 1996.

Given the size of the Crustacea, it seems best for the IWCSG to accomplish much of its work through a working group structure. The only working group currently active is the Large Branchiopod Working Group. If you are interested in heading a working group, please contact Chairman Denton Belk. Also, if someone would like to get a marine crustacean specialist group, please do the same. (Communicated by Denton Belk, [dbelk@texas.net](mailto:dbelk@texas.net))

### Latin America

#### Asociación Latinoamericana de Carcinología

The Asociación Latinoamericana de Carcinología is going strong thanks in large part to the efforts of Enrique Boschi of the Instituto Nacional de Investigación y Desarrollo Pesquero in Argentina. The Asociación has recently put out the first issue of its newsletter, the *Boletín de la Asociación Latinoamericana de Carcinología* (Vol. 1, No. 1 – August 1996). The newsletter is in Spanish and contains a lot of information of interest to TCS members, including notices of several other National Crustacean Societies in Latin America (see below). For further information, contact Dr. Boschi at [postunaster@inidep.edu.ar](mailto:postunaster@inidep.edu.ar) or at his address listed on page 23 of this newsletter.

#### Sociedade Brasileira de Carcinologia

For information, please contact:  
Danilo de Calazans  
Departamento de Oceanografia,  
Universidade de Rio Grande  
Rio Grande RS Brasil  
(E-mail: [doclarva@super.furg.br](mailto:doclarva@super.furg.br))

#### Sociedad Chilena de Carcinología

For information, please contact:  
Carlos G. Jara  
Instituto de Zoología  
Casilla 567  
Valdivia Chile

#### Asociación Argentina de Carcinología

For information, please contact:  
Daniel Roccatagliata or Graciela Cohen  
Departamento de Biología  
Facultad de Cs Exactas y Naturales  
Universidad de Buenos Aires  
Ciudad Universitaria, Núñez  
(E-mail: [rocca@biolo.bg.uba.ar](mailto:rocca@biolo.bg.uba.ar) or [cohen@artro.uba.ar](mailto:cohen@artro.uba.ar))

### Addressbook of Latin American Crustacean Researchers

The first version of an addressbook of carcinologists working in Latin America has been compiled by TCS Governor Elva Escobar-Briones and is included in this newsletter (see pp. 25-30). The list includes workers from 12 countries and compliments and expands upon the TCS E-mail Directory published in the last issue of the *Ecdysiast*. For additional information, please contact Elva Escobar-Briones at [escobri@mar.icmyl.unam.mx](mailto:escobri@mar.icmyl.unam.mx) or at her address in the directory.

### Europe

#### Biology of Crustacea Meeting

The Biology of Crustacea Meeting was held at the University of Plymouth, from 1-3 April 1996. The Meeting, co-sponsored by The Estuarine and Coastal Sciences Association (ECSA), The Society for Experimental Biology (SEB), The Marine Biological Association, U.K. (MBA) and the University of Plymouth, was held to celebrate and acknowledge the significant contributions to Marine Sciences by Professor Ernest Naylor, a past-president of ECSA, and a past-council member of the SEB and MBA. The Meeting concentrated on four themes, "Physiology, Behaviour, Genetics and Biochemistry, and Ecology," reflecting Ernest's broad research interests. Some 150 delegates attended from all around the world. The SEB provided financial support to the speakers and The Company of Biologists provided Student Bursaries, ensuring a good mix of young and well-established scientists presented their work.

The Meeting was opened by Professor John Bull, Vice-Chancellor of the University of Plymouth, who welcomed delegates and acknowledged Ernest's contribution to the educational developments in marine biology. Professor Bull recounted that he first met Ernest when he visited Plymouth in 1985 as



Specialist Adviser to the House of Lords Select Sub-Committee on Marine Science and Technology. The Scientific aspects of the meeting followed this opening address. Many of the papers at the meeting have been submitted for publication in the "Proceedings" of the meeting, following peer review (the review process is underway as I write). The accepted papers on "Physiology" and "Genetics and Biochemistry" will be published mainly in the *Journal of the Marine Biological Association of the UK* as part of one of their normal issues (we are aiming for the February 1997 issue), and the accepted papers on "Behaviour" and "Ecology" will be published as a single, dedicated issue of *Estuarine, Coastal and Shelf Sciences*. The latter will be available for purchase at a special price and details will be in a future issues of the SEB and ECSA Bulletins. Unfortunately, it was not possible to arrange a single outlet for the papers, reflecting the ever-increasing pressure on scientists to publish in international peer-reviewed journals.

Associated events included a very well-attended Poster Session (and wine) (65 posters on view) when officers of the ECSA (Donald McLusky), SEB (Chris Bridges) and MBA (Colin Brownlee) paid special tribute to Ernest's contributions to each society/association. The Poster Session was followed by a Buffet hosted by the University of Plymouth and the MBA. On Tuesday evening, Dr. Peter Herring gave the "Leslie Cooper Memorial Lecture" entitled – "Life at the deep end: the ecological success of oceanic crustaceans." This invited lecture was beautifully illustrated and very well received. The highlight of the socializing was the Symposium Dinner, where 150 delegates, family and friends joined together to pay their personal respects to Ernest and Gillian Naylor. Throughout the meal, the University of Plymouth string quartet played appropriate "digestible" music. After dinner speeches were given by David Holdich (Nottingham), Richard Hartnoll (Port Erin), David Jones (Bangor) and Brian Bayne (Plymouth), the "link man" being Malcolm Jones (Plymouth).

Ernest replied to all the kind words which had been said about him and paid his own thanks for all the help he had been given throughout his academic career, particularly to Professor Wyn Knight-Jones who appointed Ernest to his first lecturing post at Swansea. Malcolm Jones presented Gillian with a bouquet of flowers and Ernest with a watercolour painting of the "two colour morphs" of *Carcinus maenas*. All in all, an excellent evening, and a very enjoyable conference both socially and scientifically.

Finally, I should like to pay a special tribute to the members of the Organising Team (Martin Attrill, Mike Depledge, Nigel Marley, Anne Pearn, Ashley Rowden, Simon Rundle and Roddy Williamson) whose efforts contributed greatly to the success of the meeting. Also, thanks to the student helpers (Dagmar Hebel, Dominic Hussey, Stephen Roast, Susan Burton, James Strong and Scott Swift) who looked after the Registration Desk throughout the meeting. Their unselfish contributions meant that the meeting ran very smoothly, enabling all the delegates to spend their time listening to the excellent science, having conversations with old friends and colleagues, and making new acquaintances. (Communicated by Malcolm B. Jones)

---

### Copepod Conference

The Sixth International Conference on Copepoda was held in Oldenburg, Germany from 29th July to 3rd August. The conference was the largest copepod conference yet, with 250 participants including many from former Soviet Union countries. The meeting was a great success — very well organized, with a broad programme of symposia, lectures and posters. In addition, we all will cherish the experience of having "copepod soup" (made with 10 Kg of *Calanus finmarchicus* from Norway) as the first course in the conference banquet. The new president of the World Association of Copepodologists is Dr Ju-shey Ho from Long Beach, California. The

venue of the next meeting, scheduled for 1999, has yet to be announced. (Communicated by Geoff Boxshall, G.Boxshall@nhm.ac.uk)

---

### Asia

Late 1996 will be a time of much activity of crustacean interest in the Asian region. TCS Governor Ichiro Takeuchi reports that several meetings or symposia will be taking place in Japan during November and December.

The Carcinological Society of Japan (CSJ) has organized annual meetings for more than 30 years, with usually about 50 to 100 carcinologists attending from all over Japan. This year, the 34th Annual CSJ Meeting will be held during November at the Tokyo University of Fisheries in Tokyo. For specific dates and additional information, please see the "Upcoming Meetings & Symposia" section of this newsletter (pp. 13-14). Those interested in information on CSJ membership and publications should refer to the May 1996 issue of the *Ecdysiast* (Vol. 15, No. 1, p. 7).

Two international symposia organized by the National Institute of Polar Research, Tokyo are scheduled during December, 1996. Both symposia will include presentations on crustacean biology from the polar regions. These symposia include: (1) International Symposium on Environmental Research in the Antarctic; and (2) the 19th NIPR Symposium on Polar Biology. For further information about both symposia, please see pages 13-14 of this newsletter or contact the secretariats of the symposia: c/o Akiko Iida, National Institute of Polar Research, 9-10, Kaga 1-chome, Itabashi, Tokyo 173, Japan (Tel: +81(3)3962-4569; Fax: +81(3)3962-5743; E-mail: iida@nipr.ac.jp).

(Communicated by Ichiro Takeuchi, takeuchi@wakame.ori.u-tokyo.ac.jp)

---

### North America & Indo-Pacific

Nothing was submitted for the North American and Indo-Pacific regions.

## Publications & Reprints

### Academic Press

The following books of interest to carcinologists are currently available at savings up to 50% from Academic Press (AP) during their Autumn Sale. The first price listed is the sale price; the price in parentheses is the list price. Sale prices are valid through December 31, 1996. Please reference **DM37403** when placing your order. Call Toll Free 1-800-321-5068 or Fax 1-800-874-6418 or e-mail AP at ap@acad.com. AP can also be found on the Web at <http://www.apnet.com/>.

**Biology of the Lobster *Homarus americanus*.** Edited by J.R. Factor, 1995, 528 pp., ISBN: 0-12-247570-4, \$166.75 (\$195.00).

**The Biology and Management of Lobsters.** Volumes 1 & 2 (below).

Volume 1: Physiology and Behavior. 1980, 463 pp., ISBN: 0-12-177401-5, \$67.50 (\$135.00).

Volume 2: Ecology and Management. 1980, 390 pp., ISBN: 0-12-177402-3, \$56.00 (\$112.00).

**Principle Diseases of Marine Fish and Shell Fish.** Second edition. Volumes 1 & 2 (below).

Volume 1: 1990, 521 pp., ISBN: 0-12-645851-0, \$60.00 (\$120.00).

Volume 2: 1990, 516 pp., ISBN: 0-12-645852-9, \$60.00 (\$120.00).

**Ecology and Classification of North American Freshwater Invertebrates.** Edited by J.H. Thorp and A.P. Covich, 1991, 936 pp., ISBN: 0-12-690645-9, \$37.10 (\$53.00).

**Water Relations of Terrestrial Arthropods.** N.F. Hadley, 1994, 356 pp., ISBN: 0-12-312990-7, \$67.96 (\$79.95).

### Stomatopods of Vietnam

The Carcinological Society of Japan announces the following publication.

**Stomatopod Crustacea of Vietnam: the Legacy of Raoul Serène.** Raymond B. Manning, 1995. Crustacean Research, Special No. 4: viii + 339 pp., 142 figures, 38 colored plates. Price: JY 8,500 by bank cheque or JY 7,500 by Visa or MasterCard.

This report is based on part of the stomatopod collections accumulated by the late French carcinologist Raoul Serène, his draft manuscript, figures, and colored plates. Seventy-two species of stomatopods are known from the waters of Vietnam, and forty-six of these are represented in Serène's collections. Based on this material, diagnoses of and keys to all families and genera of stomatopods from the Indo-West Pacific are presented. Keys to all Indo-West Pacific species for genera represented in Vietnamese waters are included. Four new families and 18 new genera are recognized. Two new species are described. A checklist of the stomatopods of the Indo-West Pacific is provided. Colored figures of 28 species are included based on hand-painted figures prepared under Serène's direction. Serène's observations on biology, morphology, and habitat are summarized for each species included in his collections.

Order forms may be requested from:

Dr. Seiichi Watanabe, Department of Aquatic Biosciences, Tokyo University of Fisheries, 4-5-7 Konan, Minato-ku, Tokyo 108, Japan. (Fax: +81-3-5463-0536; E-mail: [watanabe@tokyo-u-fish.ac.jp](mailto:watanabe@tokyo-u-fish.ac.jp)).

or

Dr. Keiji Baba, Faculty of Education, Kumamoto University, 2-40-1 Kurokami 860, Japan. (Fax: 96-342-2529; E-mail: [keiji@gpo.kumamoto-u.ac.jp](mailto:keiji@gpo.kumamoto-u.ac.jp)).

### Deep-sea Crustaceans

**Résultats des Campagnes MUSORSTOM.** Volume 15, 1996. Mémoires du Muséum Nat. d'Histoire Naturelle, Tome 168, Zoologie. Coord. par Alain Crosnier.

The Résultats des Campagnes MUSORSTOM is an ongoing series on the deep-sea fauna of the tropical Indo-Pacific, based on unmatched material collected by recent expeditions throughout the region.

Eighteen authors from nine countries are involved in the present volume, which focuses principally on crustaceans. Ten papers report new data on the morphology, classification and biogeography of Mysidacea, Isopoda, Euphausiacea and Decapoda, and one paper deals with Bryozoa. Altogether, 77 species, 18 genera, and one family are described as new. Several papers include major revisions, notably in the anomuran family Galatheididae where the number of known species has doubled in the last few years. Our understanding of the biology of crustaceans is enhanced by the discovery of three new palaemonoid shrimps living in association with ascidians and of new gall crabs inhabiting deep-water corals, and by the description of spermatophore functional morphology in deep-sea euphausiids. The volume is richly illustrated by numerous plates and line drawings, in addition to six colour plates of freshly collected animals.

Ordering Information: Editions du Muséum 57, Rue Cuvier, 75005 Paris; ISBN 2-85653-501-1; ISSN 1243-442. Prix: 550 FF TTC (France); 538,68 FF HT (Etranger).

### Lake Baikal Crustaceans

The following book has recently been published in "NAUKA" Publications, Novosibirsk, Russia,

**Guide and Key to Pelagic Animals of Lake Baikal.** Ed. by O.A. Timoshkin, 1995. Novosibirsk, "NAUKA," Siberian Publishing Firm RAS





This "Guide and Key" contains all of the available information about the diversity and ecology of the pelagic animals of Lake Baikal in general and pelagic crustaceans in particular. The first two parts of the book contain chapters including information on the general characteristics of Lake Baikal, biodiversity of the Baikal fauna, a pictorial guide to the pelagic invertebrates, methods and results of zooplankton studies, and the structure of the lake's planktonic communities. Part 3 of the book deals with the free-living Protozoa and Rotatoria. Part 4 is titled "Pelagic Crustacea and Pisces," and includes chapters on calanoid and cyclopoid Copepoda, Cladocera, Amphipoda and more.

The preface, some chapters, all figure legends, and the keys to identification are in both Russian and English. The book is published in hard cover and is about 700 pages. The price of the book is 60 USD. For more information, contact: Oleg Timoshkin, Limnological Institute SD RAS, P.O. Box 4199, 664033, Irkutsk, Russia (E-mail: timoshkin@lin.irkutsk.su; Fax: +095-4202106).

are among major papers slated for Vol. III next year.

To date, these long-term studies have resulted in nearly 40 publications by some 18 researchers worldwide, including P.G. Moore, Nina Tzvetkova, Kathleen Conlan, John Dickinson, Ed Hendrycks, Norma Jarrett, Jane Kendall, Andr  e Chevrier, Diana Laubitz, Eric Mills, Phillip Hoover, Craig Staude and myself (ELB). These studies are being complemented biogeographically by shorter papers on amphipod crustaceans of southern California that amplify the regional pioneering studies of the late J.L. (Jerry) Barnard (In: Taxonomic Atlas of the Benthic Fauna of the Santa Maria Basin and Western Santa Barbara Channel, Part 3). All these North American accounts match earlier intensive investigations on Japanese and Russian far eastern biotas, with a result that North Pacific amphipods are now becoming one of the systematically better known crustacean faunas of the world. (Communicated by E.L. Bousfield, elbousf@mail.islandnet.com)

Unfortunately, the Department is not in a position to send these reprints out free of charge. While we will not charge for the reprints themselves, we must charge for the postage and handling to ship them. Postage and handling costs are based on the following scale for the United States.

**Foreign orders please add \$12.00 to the amounts shown.**

# of Reprints	Postage & Handling
1 - 5	\$1.50
6 - 10	\$2.00
11 - 15	\$2.50
16 - 20	\$3.00
21 - 30	\$3.50
31 - 40	\$4.00
41 - 50	\$4.50
51 - 60	\$5.00
61 - 70	\$5.50
70 +	\$6.50

When requesting reprints, please count the number of requests and remit the amount shown for postage for that number. (Checks are fine — Please **make payable to the Natural History Museum of Los Angeles County**. We do not recommend sending cash through the mail.) The reprints will then be shipped as quickly as we can get to it. Requests without remittance of the postage will be delayed until remittance is made.

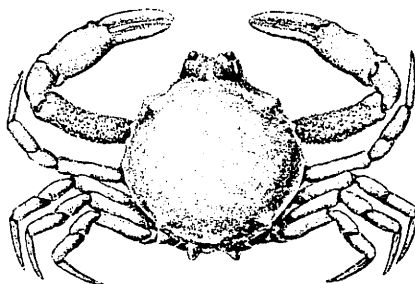
We welcome your requests but ask that you be patient as there are only two of us to handle all the requests plus everything else that must be done in the department. Please send your requests to:

George E. Davis  
Crustacea Department  
Museum of Natural History of  
Los Angeles County  
900 Exposition Blvd.  
Los Angeles, CA 90007

Again, please **make checks payable to the Natural History Museum of Los Angeles County**.

Any requests for information can also be sent by email to George Davis at 74335.576@compuserve.com.

### Garth & Haig Reprint List



*Randalia angelica*  
Garth, 1940

### Amphipacifica

The following information may be helpful in alerting TCS members to comprehensive, fully illustrated research publications on marine animals, mainly amphipod crustaceans, of the North Pacific region. Vol. II(2) of *Amphipacifica*, containing revisionary studies on Melitidae and Oedicerotidae, has recently been mailed to subscribers, and Vol. II(3) with accounts of the Corophiidae, Calliopidae and Amphilochidae is expected to appear by September of this year. Previous issues of this new Journal have treated the regional Eusiridae, Phoxocephalidae, Haustoriidae, Dexaminioidea, most of the Pleustidae, some Pontogeneiidae (*Paramoera*), and phyletic classificatory aspects of the Amphipoda as a whole. Revisions of the Hyalidae, Ischyroceridae and some Lysianassoidea and pardalis-coidea subgroups, and concluding studies on Melitidae, Pleustidae and Oedicerotidae

The Crustacea Department of the Natural History Museum of Los Angeles County has acquired the reprints of the late Dr. John Garth, Janet Haig, and others. It has taken a number of months, but we have completed the sorting and cataloging of these reprints. A list of what is available is given on the following pages (pp. 9-12). Note that the supply of certain reprints is limited and they will be shipped on a first come basis.



## Reprint List of Dr. John Garth, Janet Haig, and Others

Natural History Museum of Los Angeles County  
Crustacea Department

(List current as of 13 August 1996)

- 
- Baba, K., and Haig, J., 1990, A new species of chirostyliid crustacean (Decapoda: Anomura) from off the west coast of North America: *Proceedings of the Biological Society of Washington*, 103(4), p. 854-860.
- Brusca, R. C., 1991, Dedication to John S. Garth: *Proceedings of the San Diego Society of Natural History*, 9-27 (Photocopy).
- Delaney, P. M., 1989, Phylogeny and biogeography of the marine isopod family Corallanidae (Crustacea, Isopoda, Flabellifera): *Contributions in Science*, n. 409, 75 p.
- Efford, I. E., and Haig, J., 1968, Two new genera and three new species of crabs (Decapoda: Anomura: Albuneidae) from Australia: *Australian Journal of Zoology*, 16, p. 897-914.
- Ferguson, M. S., and Mattox, N. E., 1939, Notes on some Crustacea from Hudson Bay: *The Canadian Field-Naturalist*, 53(3), p. 36-39.
- Garth, J. S., ????, On the oceanic transport of crab larval stages: (Allan Hancock Foundation Contribution No. 287) *Proceedings of Symposium on Crustacea, Part I*, p. 443-448.
- Garth, J. S., ????, The case for a warm-temperate marine fauna on the west coast of North America
- Garth, J. S., ????, The taxonomy, distribution, and ecology of the littoral Brachyuran fauna of the Galapagos Archipelago: Dissertation abstract, p. 1-3.
- Garth, J. S., 1939, New brachyuran crabs from the Galapagos Islands: *Allan Hancock Pacific Expeditions*, 5(2), 49 p.
- Garth, J. S., 1940, Some new species of brachyuran crabs from Mexico and the Central and South American mainland: *Allan Hancock Pacific Expeditions*, 5(3), 127 p.
- Garth, J. S., 1945, Geographical account and station records of *Velero III* in Atlantic waters in 1939: *Allan Hancock Atlantic Expedition, Report Number 1*, pl. 1-28, 106 p.
- Garth, J. S., 1948, The Brachyura of the "Askoy" expedition with remarks on carcinological collecting in the Panama bight: *Bulletin of the American Museum of Natural History*, 92(Article 1), 66 p.
- Garth, J. S., 1952, "*Tyche potiguara*", a new species of decapod crustacean from Brazil (Maiidae, Ophthaliinae): (Allan Hancock Foundation Contribution Number 82), *Rev. Brasil. Biol.*, 12(1), p. 45 -48. (Photocopy)
- Garth, J. S., 1952, A review of the crustacea genus *Stilbognathus* von Martens (Decapoda, Maiidae) with description of a new species from the east coast of Florida: (Allan Hancock Foundation Contribution No. 88), *Bulletin of Marine Science of the Gulf and Caribbean*, 1(4), p. 249-256.
- Garth, J. S., 1957, The Crustacea Decapoda Brachyura of Chile: (Allan Hancock Foundation Contribution Number 104), *Reports of the Lund University Chile Expedition 1948-49*, no. 29, 133 p.
- Garth, J. S., 1967, E. Yale Dawson (Obituary): (Allan Hancock Foundation Contribution No. 305) *Bulletin of the Southern California Academy of Sciences*, 66(3), p. 149-160.
- Garth, J. S., 1986, A new genus and species of goneplacid crab (Decapoda: Brachyura) from the west coast of South and Central America: *Journal of Crustacean Biology*, 6(3), p. 543-546.
- Garth, J. S., 1987, *Platypilumnus soelae*, a new species of goneplacid crab from the north west shelf of Australia (Crustacea: Decapoda: Brachyura): *The Beagle, Records of the Northern Territory Museum of Arts and Sciences*, 4(1), p. 35-38.
- Garth, J. S., 1989, Xanthidae of Ifaluk Atoll, Caroline Islands, collected in 1953 by D. P. Abbott and F. M. Bayer with special reference to coral commensals: *Bulletin of Marine Science*, 45(2), p. 478-486.
- Garth, J. S., 1991, Taxonomy, distribution, and ecology of Galapagos Brachyura (Chapter 5), in James, M. J., ed., *Galapagos Marine Invertebrates*: New York, Plenum Publishing Company, p. 123-145.
- Garth, J. S., 1992, On the occurrence of *Thyrolambrus astroides* Rathbun in the Eastern Pacific Ocean: *Proceedings of the San Diego Society of Natural History*, no. 23, p. 1-3. (Photocopy)
- Garth, J. S., 1992, Some deep-water Parthenopidae (Crustacea, Brachyura) from French Polynesia and nearby eastern Pacific Ridges and Seamounts: *Bull. Mus. natl. Hist. nat., Paris*, 4 ser., 14, sec. A., p. 781-795.
- Garth, J. S., 1992, The Brachyuran crabs of the Revillagigedo Islands, Colima, Mexico, with remarks on insular endemism in the Eastern Tropical Pacific: *Proceedings of the San Diego Society of Natural History*, no. 24, p. 1-6.



- Garth, J. S., and Alcalá, A. C., 1977, Poisonous crabs of Indo-west Pacific coral reefs, with special reference to the genus *Demania* Laurie: Proceedings, Third International Coral Reef Symposium, p. 645-647. (Photocopy)
- Garth, J. S., and Haig, J., 1955, On a small collection of crabs from the northwest coast of South America: Reports of the Lund University Chile Expedition 1948-1949, 10 p.
- Garth, J. S., and Haig, J., 1970, Decapod Crustacea (Anomura and Brachyura) of the Peru-Chile Trench: Anton Bruun Report Number 6, p. 6.1-6.20.
- Garth, J. S., and Iliffe, T. M., 1992, *Guitonia troglaphila*, a new genus and species of anchialine crab from the Galapagos, Isla Santa Cruz, Grieta de Caleta la Torta (Crustacea: Decapoda: Brachyura): Proceedings of the Biological Society of Washington, 105(2), p. 310-316.
- Garth, J. S., and Mèndez G., M., 1983, A new species of spider crab of the genus *Libinia* from Perú, and the first known male of *Delsolaria enriquei* Garth, 1973 (Crustacea, Brachyura, Majidae): Bulletin of the Southern California Academy of Sciences, 82(3), p. 124-130.
- Garth, J. S., and Ng, P. K. L., 1985, Notes on the genus *Demania* Laurie, 1906 (Crustacea, Decapoda, Brachyura, Xanthidae): Indo-Malayan Zoology, v. 2, p. 293-308. (Photocopy)
- Garth, J. S., Haig, J., and Knudsen, J. W., 1987, Crustacea Decapoda (Brachyura and Anomura) of Enewetak Atoll in Devaney, D. M., et. al., eds., The Natural History of Enewetak Atoll. Volume II, Biogeography and Systematics: U.S. Department of Energy, Office of Scientific and Technical Information, w/addendum, p. 235-261.
- Haig, J., 1955, The Crustacea Anomura of Chile: Reports of the Lund University Chile Expedition 1948-1949, no. 20, 68 p.
- Haig, J., 1957, Four new porcelain crabs from the Eastern Pacific: (Allan Hancock Foundation Contribution No. 187) Bulletin of the Southern California Academy of Sciences, 56(1), p. 31-41.
- Haig, J., 1957, The porcellanid crabs of the "Askoy" expedition to the Panama Bight: (Allan Hancock Foundation Contribution no. 199) American Museum Novitates, no. 1865, 17 p.
- Haig, J., 1965, The Porcellanidae (Crustacea, Anomura) of western Australia, with descriptions of four new Australian species: Journal of the Royal Society of Western Australia, 48(4), p. 97-118.
- Haig, J., 1968, First report of the crab family Chirostylidae off California, and description of a new species of *Chirostylus*: California Fish and Game, 54(4), p. 270-277.
- Haig, J., 1968, Porcellanid crabs (Crustacea: Anomura) from the west coast of tropical America: Eastern Pacific Expeditions of the New York Zoological Society, Zoologica, 53(2), p. 57-74.
- Haig, J., 1972, The anomuran crabs of western Australia: their distribution in the Indian Ocean and adjacent seas: Journal of the Marine Biological Association of India, 14(2), p. 443-451.
- Haig, J., 1974, A review of the Australian crabs of family Hippidae (Crustacea, Decapoda, Anomura): Memoirs of the Queensland Museum, 71(4), p. 175-189. (Photocopy)
- Haig, J., 1974, Observations on the lithodid crabs of Perú, with description of two new species: Bulletin of the Southern California Academy of Sciences, 73(3), p. 152-164.
- Haig, J., 1976, Decapod Crustacea of Pacific coral reefs: Micronesica, 12(1), p. 183-185.
- Haig, J., 1976, *Tomopagurus macLaughlinae*, a new hermit crab from the eastern Pacific (Crustacea, Anomura, Paguridae): Bulletin of Marine Science, 26(1), p. 27-32.
- Haig, J., 1977, Description of a new hermit crab (family Paguridae) from southern California and Mexico: Proceedings of the Biological Society of Washington, 90(3), p. 648-657.
- Haig, J., 1978, Contribution toward a revision of the porcellanid genus *Porcellana* (Crustacea: Decapoda: Anomura): Proceedings of the Biological Society of Washington, 91(3), p. 706-714.
- Haig, J., 1979, A new genus and species of Chirostylidae (Decapoda, Anomura, Galatheidea) from the Hawaiian Islands: Crustaceana, Suppl. 5, p. 91-95.
- Haig, J., 1979, Expédition Rumphius II (1975) Crustacées parasites, commensaux, etc. (Th. Monod et R. Serène, Éd.) V. Porcellanidae (Crustacea, Decapoda, Anomura): Bull. Mus. natn. Hist. nat., Paris, 4(1), p. 119-136. (In English)
- Haig, J., 1981, Porcellanid crabs from the Indo-West Pacific, Part II: Steenstrupia, Zoological Museum, University of Copenhagen, 7(12), p. 269-291.
- Haig, J., 1981, Three new species of *Petrolisthes* (Decapoda, Anomura, Porcellanidae) from the Indo-West Pacific: Journal of Crustacean Biology, 1(2), p. 265-271.
- Haig, J., 1983, New *Calcinus* species (Decapoda: Anomura: Diogenidae) from Hawaii, with a Key to the local species: (Allan Hancock Foundation Contribution No. 408) Micronesica, 19(1-2), p. 107-121. (Photocopy)
- Haig, J., 1983, Porcellanidae (Decapoda, Anomura) from the Seychelles, western Indian Ocean: Crustaceana, 45(3), p. 280-289.

- Haig, J., 1984, Land and freshwater crabs of the Seychelles and neighbouring islands in Stoddart, D. R., ed., *Biogeography and ecology of the Seychelles Islands*: The Hague, Dr. W. Junk Publishers, p. 123-139.
- Haig, J., 1987, Porcellanid crabs from the Coral Sea: (Allan Hancock Foundation Contribution No. 423) *The Beagle, Records of the Northern Territory Museum of Arts and Sciences*, 4(1), p. 11-14.
- Haig, J., 1988, Two new mangrove-dwelling porcellanid crabs, of genus *Petrolisthes* Stimpson, from tropical Australia (Crustacea: Decapoda: Anomura): (Allan Hancock Foundation Contribution No. 433) *The Beagle, Records of the Northern Territory Museum of Arts and Sciences*, 5(1), p. 71-76.
- Haig, J., 1989, Porcellanidae (Decapoda, Anomura) collected during Musorstom 1 and 2: (Allan Hancock Foundation Contribution No. 432) *Mémoires du Muséum, National D'Histoire Naturelle* 5, p. 93-101.
- Haig, J., 1992, Hong Kong's porcellanid crabs: *Proceedings of the 4th International Marine Biological Workshop*, Hong Kong University Press, p. 303-327.
- Haig, J., and Abbott, D. P., 1980, Macrura and Anomura: The ghost shrimps, hermit crabs, and allies in Morris, R. H., Abbott, D. P., and Haderlie, E. C., *Intertidal Invertebrates of California*: Stanford, Stanford University Press, Chapter 24 with plates, p. 577-593.
- Haig, J., and Ball, E. E., 1975, Hermit crabs from north Australian and eastern Indonesian waters (Crustacea Decapoda: Anomura: Paguroidea) collected during the 1875 Alpha Helix Expedition: *Records of the Australian Museum*, v. 40, p. 151-196.
- Haig, J., and Harvey, A. W., 1991, Three new species of the *Pagurus lepidus* complex (Decapoda, Anomura, Paguridae) from the eastern Pacific: *Contributions in Science*, no. 430, 11 p.
- Haig, J., and Kropp, R. K., 1987, *Petrolisthes eldredgei*, a new porcellanid crab from the Indo-West Pacific, with redescription of two related species: *Allan Hancock Foundation Contribution No. 429*, p. 171-186.
- Haig, J., and McLaughlin, P. A., 1991, The identity of *Pagurus lepidus* (Bouvier) (Decapoda, Anomura, Paguridae) and description of a new eastern Pacific insular species: *Contributions in Science*, no. 425, p. 1-12.
- Haig, J., and Provenzano, A. J. Jr., 1965, A new genus and two new species of diogenid hermit crabs (Decapoda, Anomura): *Crustaceana*, 9(2), p. 199-207.
- Haig, J., and Wicksten, M. K., 1975, First records and range extensions of crabs in California waters: *Bulletin of the Southern California Academy of Sciences*, 74(3), p. 100-104.
- Haig, J., Murugan, T., and Nair, N. B., 1986, *Hippa indica*, a new species of mole crab (Decapoda, Anomura, Hippidae) from the south west coast of India: *Crustaceana*, 51(3), p. 286-292.
- Harvey, A. W., and McLaughlin, P. A., 1991, Two new hermit crabs of the genus *Pagurus* (*Provenzanoi* group) (Crustacea, Anomura, Paguridae) from the eastern Pacific, with notes on their ecology: *Contributions in Science*, no. 425, p. 13-21.
- Kropp, R. K., and Haig, H., 1994, *Petrolisthes extremus*, a new porcelain crab (Decapoda: Anomura: Porcellanidae) from the Indo-West Pacific: *Proceedings of the Biological Society of Washington*, 107(2), p. 312-317.
- Lamberts, A. E., and Garth, J. S., 1977, Coral-crab commensalism in Xanthids: *Pacific Science*, 31(3), p. 245-247.
- Leung, Y., 1967, An illustrated key to the species of whale-lice (Amphipoda, Cyamidae), ectoparasites of Cetacea, with a guide to the literature: *Crustaceana*, 12(3), p. 279-291.
- Leung, Y., 1970, *Cyamus orcinii*, a new species of whale-louse (Cyamidae, Amphipodae) from a killer whale: *Bulletin de Pl F. A. N.*, 32(3), 669-675.
- Mattox, N. T., 1936, A new fairy shrimp belonging to the genus *Pristicephalus*: *The American Midland Naturalist*, 17(6), p. 950-953.
- Mattox, N. T., 1937, Studies on the life history of a new species of fairy shrimp, *Eulimnadia diversa*: *Transactions of the American Microscopical Society*, 56(2), p. 249-255.
- Mattox, N. T., 1939, Description of two new species of the genus *Eulimnadia* and notes on the other Phyllopoda of Illinois: *The American Midland Naturalist*, 22(3), p. 642-653. (Photocopy)
- Mattox, N. T., 1950, A new species of phyllopod of the genus *Streptocephalus* from Mona Island, Puerto Rico: *Journal of the Washington Academy of Sciences*, 40(12), p. 413-415.
- Mattox, N. T., 1950, Notes on the life history and description of a new species of Conchostracan Phyllopod, *Caenestheriella gynecia*: *Transactions of the American Microscopical Society*, 69(1), p. 50-53.
- Mattox, N. T., 1951, A preliminary report on the biology and economics of the spiny lobster in Puerto Rico: *Proceedings of the Gulf and Caribbean Fisheries Institute*, 2 p.
- Mattox, N. T., 1952, A new genus and species of Limnadiidae from Venezuela (Crustacea: Conchostraca): *Journal of the Washington Academy of Sciences*, 42(1), p. 23-26.
- Mattox, N. T., 1952, Some observations on Caribbean coral reefs: *Turtlox News*, 30(8), 3 p.



- Mattox, N. T., 1953, A new Conchostracan Phyllopod, *Eulimnadia alineata*, from Arkansas: The American Midland Naturalist, 49(1), p. 210-213.
- Mattox, N. T., 1953, Two new species of *Eulimnadia* from Maryland and Virginia (Crustacea: Conchostraca): Journal of the Washington Academy of Sciences, 43(2), p. 57-60.
- Mattox, N. T., 1954, Description of *Eocyclus concavus* (Mackin) with a review of other North American species of the genus (Crustacea: Conchostraca): Journal of the Washington Academy of Sciences, 44(2), p. 46-49.
- Mattox, N. T., 1957, A new estheriid conchostracan with a review of the other North American forms: The American Midland Naturalist, 58(2), p. 367-377.
- Mattox, N. T., 1957, Proposed addition of the name "*Cyzicus*" Audouin, 1837 (Class Crustacea, Order Conchostraca) to the "Official list of generic names in zoology" and matters incidental thereto: Bulletin of Zoological Nomenclature, 13(7), p. 206-209.
- Mattox, N. T., and Velardo, J. T., 1950, Effect of temperature on the development of the eggs of a Conchostracan Phyllopod, *Caenestheriella gynecia*: Ecology, 31(4), p. 497-506.
- McLaughlin, P. A., and Haig, J., 1984, A review of *Pagurixus* (Decapoda, Anomura, Paguridae) and descriptions of new species: Crustaceana, 47(2), p. 121-148.
- McLaughlin, P. A., and Haig, J., 1989, On the status of *Pylopaguropsis zebra* (Henderson), *P. magnimanus* (Henderson), and *Galapagurus teevanus* Boone, with descriptions of seven new species of *Pylopaguropsis* (Crustacea: Anomura: Paguridae): Micronesica, 22(2), p. 123-171.
- McLaughlin, P. A., and Haig, J., 1993, Two new species of the Pacific component of the *Provenzano* Group of *Pagurus* (Decapoda: Anomura: Paguridae) and a key to the regional species: Bulletin of Marine Science, 52(2), p. 642-668.
- McLaughlin, P. A., and Haig, J., 1995, A new species of *Goreopagurus* McLaughlin (Decapoda: Anomura: Paguridae) from the Pacific, and a comparison with its Atlantic counterpart: Proceedings of the Biological Society of Washington, 108(1), p. 68-75.
- Nations, J. D., 1975, The genus *Cancer* (Crustacea: Brachyura): systematics, biogeography and fossil record: Natural History Museum of Los Angeles County Science Bulletin 23, 104 p.
- Pilgrim, R. L. C., 1964, Stretch receptor organs in *Squilla mantis* Latr. (Crustacea: Stomatopoda): Journal of Experimental Biology, no. 41, p. 793-804.
- Pilgrim, R. L. C., 1965, Some features in the morphology of *Lomis hirta* (Lamarck) (Crustacea: Decapoda) and a discussion of its systematic position and phylogeny: Australian Journal of Zoology, no. 13, p. 545-547. (Photocopy)
- Pilgrim, R. L. C., 1967, *Argulus japonicus* Thiele, 1900 (Crustacea: Branchiura)-A new record for New Zealand: New Zealand Journal of Marine and Freshwater Research, 1(3), p. 395-398.
- Pilgrim, R. L. C., and Wiersma, C. A. G., 1967, Observations on the skeleton and somatic musculature of the abdomen and thorax of *Procambarus clarkii* (Girard), with notes on the thorax of *Panulirus interruptus* (Randall) and *Astacus*: Journal of Morphology, 113(3), p. 453-487.
- Reay, P. J., and Haig, J., 1990, Coastal hermit crabs (Decapoda: Anomura) from Kenya, with a review and key to East African species: Bulletin of Marine Science, 46(3), p. 578-589.
- Trott, L. B., and Garth, J. S., 1970, *Lissocarcinus orbicularis* Dana (Portunidae, Caphyrinae), commensal with *Holothuria argus* Jaeger - a new host record; cohabitation with the pearlfish, *Carapus homei* (Richardson): Crustaceana, 19(3), 1 p.
- Wetzer, R., and others, 1991, Catalog of the isopod crustacea type collection of the Natural History Museum of Los Angeles County: Natural History Museum of Los Angeles County Technical Reports Number 3, 59 p.
- Wetzer, R., Delaney, R. M., and Brusca, R. C., 1987, *Politolana wiskstenae* new species, a new cirolanid isopod from the Gulf of Mexico, and a review of the "*Conilera* genus-group" of Bruce (1986): Contributions in Science, no. 392, 17 p.
- Wootton, D. M., and Mattox, N. T., 1958, Notes on the distribution of conchostracans in California: Bulletin of the Southern California Academy of Sciences, 57(3), p. 122-124.
- Yaldwyn, J. C., 1962, A new *Pasiphaea* (Crustacea, Decapoda, Natantia) from southern Californian waters: Allan Hancock Foundation Contribution No. 245, p. 15-24.

## UPCOMING MEETINGS & SYMPOSIA

### TCS Meetings

Information on TCS meetings is also available on the TCS home page (see page 4) where they will be updated as details become available. You may wish to check the home page periodically for the latest information.

#### Winter 1996 (Albuquerque, New Mexico)

The 1996 Winter TCS Meeting will be held from December 26-30 at the Albuquerque Convention Center in Albuquerque, New Mexico, USA in conjunction with Society of Integrative and Comparative Biology (SICB). TCS will be contributing to paper sessions. Registration forms and calls for abstracts were mailed separately to all members. Contact the Program Officer, Tom Wolcott (Tom\_Wolcott@ncsu.edu), for further information.

#### Summer 1997 (Mobile, Alabama)

The 1997 Summer TCS Meeting will be held from May 21-24, 1997 at the Adam's Mark Hotel in Mobile, AL, USA, with an excursion to the Dauphin Island Sea Lab. The meeting will be hosted by Richard Modlin of the University of Alabama at Huntsville and Ken Heck of the Dauphin Island Sea Lab. The meeting will include symposia on Biodiversity in Latin American Crustacea (organized by Elva Escobar-Briones), and in honor of Austin Williams (organized by Ray Manning and Darryl Felder). Jack O'Brien is also working up a symposium on parasite-host interactions involving crustaceans. A complete registration packet, including meeting and hotel registration forms, abstract transmittal forms, etc., is included on pages 15-20 of this newsletter.

#### Winter 1997-1998 (Boston, Massachusetts)

The Winter 1997-1998 TCS Meeting will be held in conjunction with SICB at the Marriott Copley Place, Boston, MA, USA during January 1988. (SICB co-sponsorship of symposia requires a 24-month lead time, so we'll have to hustle even to get independent TCS symposia onto the program.)

#### Summer 1998 (Amsterdam, The Netherlands)

The 1998 Summer TCS Meeting will be held from July 20-24, 1998 in Amsterdam, The Netherlands in conjunction with the Fourth International Crustacean Congress (ICC 4) and the Third European Crustacean Conference. TCS will be co-sponsoring these meetings. For specific details, please see the ICC4 announcement on pages 21-22 of this newsletter.

Proposals for the following meetings have been recently approved by the TCS Board.

#### Summer 1999 (Chattanooga, Tennessee)

The Summer 1999 Meeting will be held in Chattanooga, TN. The meeting will be hosted by Jeff Cambell.

#### Summer 2001 (Melbourne, Australia)

The Summer 2001 Meeting will be held in Melbourne, Australia. The meeting will be hosted by Gary Poore of the Museum of Victoria.

### International Meetings & Symposia

#### 34th Annual Meeting of the Carcinological Society of Japan

November 9-10, 1996  
(Tokyo, Japan)

The 34th Annual CSJ Meeting will be held in the Convention Room of the Tokyo University of Fisheries, 4-5-7 Konan, Minato, Tokyo 108, Japan. Fees for the meeting are 4,000 yen for CSJ members and 5,000 yen for non-members. A lunch box (10 November) and abstracts are included. For further information about the meeting, please contact:

Prof. Seiichi Watanabe  
Tokyo University of Fisheries  
4-5-7 Konan, Minato, Tokyo 108, Japan  
Tel: +81(3)5463-0535  
Fax: +81(3)5463-0684  
E-mail: watanabe@tokyo-u-fish.ac.jp

#### International Symposium on Environmental Research in the Antarctic

December 3-4, 1996  
(Tokyo, Japan)

Major topics include: (1) Overview of the Antarctic environmental research; (2) Upper atmospheric environment in the Antarctic; (3) Environmental change in atmosphere and ocean; and (4) Antarctic marine and terrestrial ecosystems and environments.

#### 19th NIPR Symposium on Polar Biology

December 5-6, 1996  
(Tokyo, Japan)

Major topics include: (1) Biological Process in the Southern Ocean; and (2) Lakes in Polar Regions.

Both of the symposia will be held in the Convention Room of the National



Institute of Polar Research, 9-10, Kaga 1-chome, Itabashi, Tokyo 173, Japan. For further information, please contact the secretariat of these symposia:

c/o Akiko Iida  
National Institute of Polar Research  
9-10, Kaga 1-chome, Itabashi  
Tokyo 173, Japan  
Tel: +81(3)3962-4569  
Fax: +81(3)3962-5743  
E-mail: iida@nipr.ac.jp

### **Aquaculture Europe '97**

**May 5-10, 1997  
(Martinique)**

This conference is to be jointly organized by the European Aquaculture Society (EAS), the World Aquaculture Society (WAS), the Association pour le Développement de l'Aquaculture (ADA), the Caribbean Aquaculture Association (CAA), and the Association pour le Développement de l'Aquaculture en Martinique (ADAM) and will take place in Les Trois Ilets.

The main theme of the conference will be "Tropical and Insular Aquaculture" with sessions on: Tropical fish culture; *Tilapia* in marine waters; Invertebrate aquaculture; Shrimp/prawns and molluscs; Business planning; Marketing and quality control; Seafood technology in tropical environments; Socio-economics of aquaculture in island environments; Environmental impact of cage culture in shallow, tropical coral reef ecosystems; Marine cage design and engineering; Open sea farming; Anti-hurricane technology; and Ornamental species. It will also be possible to address various aspects of aquaculture in the several poster sessions and discussions. Dr. Colin Nash, former Programme Leader of the FAO Aquaculture Development and Coordination Programme will be in charge of the meeting programme. Further information on this meeting may be obtained from the EAS Secretariat, Coupure Rechts 168, B-9000 Gent (Tel: +32-9-2237722; Fax: +32-9-2237604).

### **Second International Marine Isopod Workshop**

**Dedicated to the Memory of  
Tom Bowman**

**May 18-21, 1997  
Dauphin Island Sea Lab  
(Dauphin Island, Alabama U.S.A.)**

The first international marine isopod workshop was hosted by Gary Poore, in Melbourne, 1989. This second workshop is being organized by Rick Brusca, Brian Kensley and Bob George, and will be hosted by the Dauphin Island Sea Lab (thanks to A generous offer from Richard Modlin and Ken Heck). The Isopod Workshop will take place immediately prior to the summer Crustacean Society Meeting (see pages 15-20), and workshop participants will be shuttled from Dauphin Island to Mobile the day before the TCS meeting begins. The workshop will focus on contemporary issues in isopod biology, and on issues important to moving the field into the 21st Century. Preliminary ideas include methods of phylogenetic & biogeographic analysis, biodiversity databasing and analysis, electronic access/dissemination of data, and standards for the field. Both topical sessions and contributed papers sessions are being planned.

#### **Preliminary Schedule:**

- May 18. Workshop participants arrive at Mobile Airport. Shuttle van to DISL. Evening mixer.
- May 19. Morning symposium  
Afternoon contributed papers
- May 20. Morning symposium  
Afternoon contributed papers  
Evening banquet at DISL
- May 21. Morning workshop and demonstrations; depart by van after lunch for Mobile, AL

**Lodging:** Very pleasant, dormitory-style rooms are available at DISL. In addition, there are four modestly-priced motels on Dauphin Island. Participants may choose to stay in a motel (at their own expense), or in the dormitory (included in the registration fee). Of the four motels on

Dauphin Island, most people recommend the Gulf Breeze.

Gulf Breeze Motel: 1510 Cadillac Ave.  
(334) 861-7344, 861-6616  
Bayside Motel & Apartments: 510  
Lemoyne Dr. (334) 861-4994  
Harbor Lights Inn: 1506 Cadillac Ave.  
(334) 861-5534  
Sand Castle Beach Front Condominiums:  
50 Fomey Johnston St. (334) 861-6691

**Meals:** All meals are included in the registration fee. This includes light dinner and a mixer on the 18th, three meals on the 19th and 20th (dinner banquet on the 20th), and breakfast and lunch on the 21st. There are also three cafes on the Island, should participants choose to dine out.

**Cost:** Registration fees, including lodging, meals, conference costs, shuttles, etc. are projected to be less than \$200/person. Kensley and Brusca plan to submit a proposal to NSF which, if funded, would help defray flight expenses for those with a need (but, we will not know the outcome of this proposal until Spring '97). We are especially encouraging colleagues from Europe, Asia, and Latin America, and we also hope to develop a good mix of established workers and young scientists entering the field (graduate students and post-grads).

**Publication of Proceedings:** We hope to publish the results of the workshop in a refereed scholarly outlet. Preliminary inquiries have been initiated with the Journal of Crustacean Biology, Bulletin of Marine Science, and Crustacean Issues (Balkema). We will keep participants informed of the status of these negotiations as they proceed.

For information and registration material, contact Brian Kensley (e-mail preferred):

Dr. Brian Kensley  
Invertebrate Zoology Department  
National Museum of Natural History  
Washington, D.C. 20560 USA  
Tel: 202-357-4666, 202-357-4993  
Fax: 202-357-3043  
E-mail: mnihiv019@sivm.si.edu

1997

**THE CRUSTACEAN SOCIETY SUMMER MEETING****May 21 -24 — Mobile, Alabama****Hosted By****The Dauphin Island Sea Lab  
Dauphin Island, Alabama****Richard F. Modlin and Ken Heck, Co-organizers**  
**e-mail:modlinr@email.uah.edu and kheck@jaguar1.usouthal.edu**

**Meeting Site:** The meeting will take place in the Adam's Mark Hotel, 64 Water Street, Mobile, Alabama. This is a five star hotel located on waterfront in downtown Mobile. It is within walking distance of many of Mobile's restaurants and cultural centers. Although this is a five star hotel, the dress code will remain the same as it has been at previous TCS summer meetings, casual.

**Lodging:** The Adam's Mark has set aside a block of rooms for our use at \$79.00 per night (excluding local taxes). To reserve a room use the enclosed registration form or contact the Adam's Mark Hotel directly by using the local telephone number 334-438-4000, or FAX 334-415-3060. To receive the TCS room rate you need to indicate that you are attending the 1997 TCS Summer Meeting.

**Transportation:** Mobile is about 3 hours by automobile from New Orleans and is served locally by Delta, Continental and Northwest Airlines. Shuttle service is available from the Mobile Airport to the Adam's Mark Hotel for under \$20.00. Avis Rental Cars has provided a discounted rate for those attending the 1997 TCS Summer Meeting for vehicles rented either at Mobile Airport or the New Orleans International Airport. To obtain the TCS discount rate, reservations need to be made prior to arrival and mentioning the Avis Worldwide Discount number **J627926** allocated to the TCS meeting. Call Avis at 1-800-331-1600 to make your reservations. Interstate 10 (I-10) from New Orleans enters Mobile from the west and from the east via Pensacola, FL. Those coming from the north can enter Mobile via I-65 which connects to I-10 at Mobile. From I-65 connect to I-10 east toward Florida. The Adam's Mark Hotel is off I-10 on the left at the base of the Water Street exit.

**Registration:** Registration will be between 4 pm and 8 pm on Wednesday May 21 at the Adam's Mark Hotel and from 8 am until 4 pm on Thursday and Friday, May 22 and 23.

**Oral and Poster Presentations:** Oral presentations will be 12 minutes, with 3 minutes for questions; this time limit will be strictly enforced. Posters will be limited to 40" (102 cm) X 60" (152 cm) displays. Push pins will be available.

**Symposia:** Two symposia, one honoring Austin Williams and the other discussing the Biodiversity of Latin American Crustaceans, are scheduled for this TCS meeting, in addition to the contributed oral and poster presentations.





**Attendees to the International Isopod Symposium:** In consideration for those attending the International Isopod Symposium organized by Rick Brusca, which is scheduled from May 18-21 at the Dauphin Island Sea Lab, Dauphin Island, AL, the 1997 TCS Summer Meeting will follow immediately after, 25 miles up the road in Mobile.

**Social Mixer:** The Social Mixer or traditional beerfest will be held Wednesday evening from 7 pm until 9 pm at the Adam's Mark Hotel. Snacks, tap beer, red or white wine by the glass, and non-alcoholic punch will be provided by the society; a cash bar will also be available. Please indicate on the preregistration application if you are planning to attend the social.

**Seafood Fiesta:** Our banquet will be a seafood extravaganza on the campus of the Dauphin Island Sea Lab. The price of the banquet will include food and all drinks (tap beer, wine and soft drinks). The banquet will be held Friday evening. Since the sea lab is about 25 miles south of Mobile, buses will be available to transport participants from the hotel to DISL and return for those with or without vehicles. A live band will provide entertainment and music for dancing. Payment for banquet tickets should be included with the registration fees.

**Other meals:** The Adam's Mark Hotel offers an excellent lunch menu under the title "Lunch in the Fast Lane" with meals that range between \$8-10. Additionally, there are lunch and dinner restaurants to fit all pocketbooks in the vicinity of the hotel.

**TCS 1997 Logo T-shirt:** A T-shirt sporting the 1997 TCS Summer Meeting logo will be available for sale during the meeting. These can be ordered in advance by marking the appropriate box on the registration application.

**Saturday field trips:** The DISL has made their two research vessels, the *R/V Verrill* and the *R/V Deborah B*, available for our use. Both are equipped to trawl, dredge and net. A unique collecting/trawling trip in the Gulf of Mexico off the mouth of Mobile Bay is scheduled for Saturday after the TCS meeting. A nominal fee of \$20 per individual needs to be charged to offset the operating expenses of these vessels. This is an optional trip and scheduled for cancellation in case of insufficient subscription. Since the crustacean fauna is abundant and diverse, this is a great opportunity to collect and experience the crustaceans of the northern Gulf of Mexico. Since a prior injury release form needs to be submitted for each participant, please indicate your interest by marking the appropriate box on the registration application. Shoreline field trips with local guides will also be available to a variety of coastal habitats around Dauphin Island on Saturday after the TCS meeting. For either the vessel or coastal field trips bring appropriate shoes (no sandals). Transportation to and from Dauphin Island on Saturday needs to be individually arranged.

***TCS 1997 Summer Meeting  
May 21-24, 1997***

***Preregistration Form***

**Deadline for preregistration is February 1, 1997**

Name to appear on your badge: \_\_\_\_\_

Your institution and mailing address: \_\_\_\_\_

\_\_\_\_\_

Work phone: \_\_\_\_\_ Home phone: \_\_\_\_\_

Fax: \_\_\_\_\_ E-mail: \_\_\_\_\_

Registration: You must register to attend talks.

Number	Item	Total US \$
_____	TCS Member Registration @ \$100	_____
_____	Late Registration add \$25 (after February 1)	_____

**Please note:** Only \$75 of the registration fee will be refunded after March 1, 1997.

**Activities:** Open to registrants

_____	Welcome Reception, Wednesday Evening	_____ Free
_____	Saturday Research Vessel Boat Trip @ \$20	_____
_____	Friday Evening Seafood Feast with Live Music @ \$20	_____
_____	T-shirts @ \$15 _____ Large _____ Xlarge	_____

**Total Enclosed:** \_\_\_\_\_

Details will accompany your registration confirmation.

Make check payable (in US \$) to TCS.

Please mail form and payment to:

TCS  
Carolyn F. Wood  
Dauphin Island Sea Lab  
P.O. Box 369-370  
Dauphin Island AL 36528

Phone: (334) 861-7534  
Fax: (334) 861-7540



***TCS 1997 Summer Meeting  
May 21-24, 1997***

***Abstract Transmittal Form***

Please complete (typewritten in English) and return by February 1, 1997 to: TCS, c/o Carolyn F. Wood, Dauphin Island Sea Lab, P.O. Box 369-370, Dauphin Island, AL 36528 USA. Acknowledgment of abstract will be sent by e-mail. **Please note: Due date for registration is February 1, 1997.**

Author(s), last name first: \_\_\_\_\_

Institution of first author: \_\_\_\_\_

Address of first author: \_\_\_\_\_

\_\_\_\_\_

Phone: \_\_\_\_\_

E-mail: \_\_\_\_\_

Paper to be presented orally \_\_\_\_\_ or as a poster \_\_\_\_\_ (Check one)

To be part of: Manning Symposium \_\_\_\_\_, TCS \_\_\_\_\_ regular, Latin American Crustaceans \_\_\_\_\_

Eligible for TCS best student paper award \_\_\_\_\_ A/V Needs: \_\_\_\_\_

**Abstract:** Please use clear type no smaller than 12 pitch or 10 point. Please submit your abstract on diskette and as a hard copy. Software must be IBM compatible (either Word or Wordperfect) using the box as a size guide. The entire abstract must fit within a 4" X 5" box. Follow the format shown below. For an oral presentation, please indicate the speaker with an asterisk (\*).

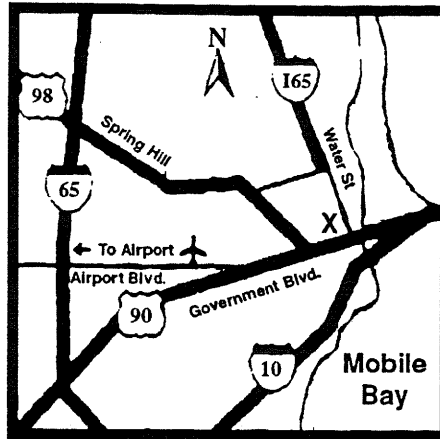
Cumberlidge, Neil. Department of Biology, Northern Michigan University, Marquette, Michigan, 49855, USA. FRESHWATER CRABS AND HUMAN LUNG DISEASE IN AFRICA.

Fresh-water crabs are involved in the transmission of human lung fluke disease (paragonimiasis) in West and Central Africa. Species of fresh-water crab.....

I have a reservation at the Adam's Mark on \_\_\_\_\_

Check in time 3 p.m.  
Check out time 12 noon.

**Adam's Mark Riverview Plaza Hotel**  
64 South Water Street  
Mobile, AL 36602  
334-438-4000  
334-415-3060 (FAX)  
1-800-444-ADAM (for any Adam's Mark)



From the Mobile Municipal Airport, follow Airport Blvd. East for 8 miles to I-65 South. Follow I-65 to I-10 East. Follow I-10 for 7 miles to Water Street exit. Hotel is at end of ramp at intersection of Government and Water Streets.

Please tear off this portion for your personal records.

The Adam's Mark Mobile is pleased to host **THE CRUSTACEAN SOCIETY 1997 SUMMER MEETING**. To insure accurate reservations, please complete this reservation request and return it before **March 1, 1997**. Requests received after this date will be accepted based on room and rate availability. Reservation requests must be accompanied by a deposit equal to one night's room rate plus 10% occupancy tax. This deposit will be applied to the last night of the reservation.

**Regular Rack Rate:**

Room type preference:    Single    Double    Triple    Quadruple

- ☐ Special Group Rate  
☐ Deluxe Guest Room  
☐ Club Level Guest Room  
☐ One Bedroom Suite  
☐ Hospitality Suite

Number of Guests: \_\_\_\_\_

Special Requests (subject to availability)

- ☐ Roll-Away Bed (\$10 per night)    ☐ Crib (no charge)  
☐ Wheelchair Accessible Room  
☐ Nonsmoking Room  
☐ King Bed    ☐ Two Double Beds

Name: \_\_\_\_\_

Address: \_\_\_\_\_

City/State/Zip: \_\_\_\_\_

Telephone: \_\_\_\_\_

Arrival Date: \_\_\_\_\_ Arrival Time: \_\_\_\_\_

Departure Date: \_\_\_\_\_

Additional Guest(s): \_\_\_\_\_

- ☐ I have enclosed a check in the amount of one night's room rate plus 10% occupancy tax.  
☐ Please charge one night's room rate plus 10% occupancy tax to the following credit card:  
☐ MasterCard, ☐ Visa, ☐ American Express, ☐ Carte Blanche/Diners Club, ☐ Discover, ☐ JCB

Card Number: \_\_\_\_\_ Exp. Date \_\_\_\_\_

I understand that I am liable for one night's room rate plus 10% occupancy tax which will be covered by my deposit in the event that I do not arrive, cancel less than 72 hours prior to arrival, or depart earlier than scheduled.

\_\_\_\_\_  
Name of Credit Card Holder

\_\_\_\_\_  
Signature of Card Holder

- Check-in time after 3:00 p.m. Check-out time is 12:00 noon. Occupancy tax is subject to change.
- Cancellation or modification of reservation must be made at least 72 hours prior to arrival to avoid forfeiture of deposit. Ask for and retain cancellation number until you receive refund of deposit or credit to credit card.
- No charge for children under 18 when sharing room with parents and using existing bed space.
- All hotel accounts are subject to credit arrangements at time of registration and payable at departure.

# INFORMATION

**LOCATION:** In the heart of downtown business and entertainment district overlooking Mobile Bay. Connected to the Mobile Convention Center.

**ACCOMMODATIONS:** 375 spacious guest rooms including 12 suites with in-room wet bars and refrigerators, card access systems, and in-room movies. Nonsmoking rooms available. Club-Level - Special upgraded amenities with access to staffed private Club Lounge featuring complimentary continental breakfast, hors d'oeuvres and large screen TV.

**GUEST SERVICES:** Business center, concierge, health club, whirlpool, sauna, outdoor pool with sun deck, gift shop, 24-hour room service, express checkout, golf courses nearby, covered parking, same day dry cleaning/laundry.

**CANCELLATION POLICY:** Deposit refunded if cancellation is received 72 hours prior to arrival by cancellation number.

**INFORMATION:** For additional information, please call 334-438-4000

**We look forward to having you as our guest!**

Adam's Mark Riverview Plaza Hotel  
Attn: Reservations  
64 South Water Street  
Mobile, AL 36602

Place  
Stamp  
Here

Did you

1. Fill out this card completely?
2. Enclose one night's deposit or credit card number?
3. Tear off the portion for you records?
4. Attach a stamp?

We look forward to your arrival.

# FOURTH INTERNATIONAL CRUSTACEAN CONGRESS

and including the

## THIRD EUROPEAN CRUSTACEAN CONFERENCE

### 1998 ANNUAL SUMMER MEETING OF THE CRUSTACEAN SOCIETY

July 20 - 24, 1998

### AMSTERDAM, THE NETHERLANDS

Dear Colleagues,

It is a great pleasure for me to announce and invite you to attend the fourth International Crustacean Congress — ICC 4 to be held on Monday 20 through Friday 24, with registration on Sunday 19, 1998, in Amsterdam, The Netherlands. The Congress is organized by the "Stichting Crustacea", which contains the organizing committee members. In addition, ICC 4 will also host the Third European Crustacean Congress and the 1998 Annual Summer Meeting of the Crustacean Society.

The primary objective of this Congress is to bring together the international scientific community, specialized in the study of crustaceans. We look forward to a fruitful exchange of ideas, and to meeting an interesting and diverse gathering of individuals from all over the world who share an involvement in the fascinating field of crustacean studies.

We hope to see you in Amsterdam in 1998

Fred Schram  
Chairman ICC 4

### SCIENTIFIC PROGRAMME

The allover theme of this congress will be:

### CRUSTACEA IN THE BIODIVERSITY CRISIS

Papers on all aspects of all groups of crustaceans may be submitted. Both invited lectures and contributed papers will be organized according to the following subthemes:

- Systematics, Evolution, Phylogeny and Paleontology
- Development, Larval Biology and Life Histories
- Ecology and Behavior
- Physiology, Biochemistry; Genetics and Molecular Biology
- Fisheries, Aquaculture, Pollution and Toxicology

Every morning there will be a plenary session with invited speakers. After lunch there will be 15 parallel sessions as well as poster presentations. More about the Scientific programme will be forthcoming in the 2nd Announcement.

### CONTRIBUTED PAPERS

Next to the plenary sessions with invited speakers, there will be sessions for contributed papers. Although several parallel sessions are anticipated right now, the exact number will depend on the abstract response in later announcements. Contributed talks will be allocated the usual 15 minutes for presentation and questions.



## GUIDELINES

Guidelines for Abstracts will be determined in the 2nd or 3rd Announcement. Guidelines for Manuscripts, including refereeing procedures, will also be determined in the 2nd or 3rd Announcement.

## VENUE

The Congress will be held in the buildings of the University of Amsterdam right in the heart of the old city. This also means that lunches can be taken at the University "Mensa", which provides good meals for little money. Amsterdam is perfectly situated and has an efficient rail network, public transport, and .renamed schiphol airport. Its canals, canal houses and canal boats are famous. There are many interesting museums, churches, nice shopping streets and fine restaurants for all kinds of tastes. The people are friendly and diverse.

## LANGUAGE

The Congress language will be English.

## EXHIBITION

In the hall of the parallel session building there will be an exhibition with various stands for book publishers, instruments, computer programs, professional groups, and other things.

## SOCIAL EVENTS

Social events will be organized for delegates and accompanying guests. Although there is enough to do and to see in Amsterdam, for accompanying guests there will also be a possibility for excursions and tours.

## ACCOMMODATIONS

Accommodations will be at local hotels. In Amsterdam, there are various hotels in various prices. In some cases, it is possible to use the University accommodations. Camping nearby is also a (cheap) possibility. July is a busy month in Amsterdam, so it is necessary to reserve a hotel early. A warning: in Amsterdam, trying to park your car is a frustrating business.

## FEE

The Conference registration fee will be around f 650. This will include an initial reception, the Proceedings volume, a book of abstracts, free coffee and tea during the sessions, and a public transport card. Not included in the fee are: hotel accommodation, lunch, Congress dinner and evening meals. In later announcements you can subscribe to these services. It will be necessary to charge all delegates the conference fee, but there will be a special price for accompanying guests. Early bookings will receive a reduction on the fee. Accompanying guests (not attending the congress) will pay a minimum fee. More about this reduction and the fee for accompanying guests in the 2nd announcement.

### I Plan to participate in the Fourth International Crustacea Congress

Name (Family name): \_\_\_\_\_ Title: \_\_\_\_\_ First name(s): \_\_\_\_\_

Organization/Institute/Department: \_\_\_\_\_

Address: \_\_\_\_\_

Telephone: \_\_\_\_\_ Fax: \_\_\_\_\_ E-mail: \_\_\_\_\_

I intend to submit: ☐ a poster ☐ an oral presentation ☐ a paper ☐ an abstract ☐ \_\_\_\_\_

relevant to: ☐ Systematics ☐ Evolution ☐ Phylogeny ☐ Paleontology ☐ Biodiversity ☐ Fisheries ☐ Pollution  
☐ Toxicology ☐ Morphology ☐ Development ☐ Larval Biology ☐ Aquaculture ☐ Behavior ☐ Physiology  
☐ Ecology ☐ Genetics ☐ Molecular Biology ☐ Biochemistry ☐ other

Proposed title of presentation: \_\_\_\_\_

Accompanying person(s): yes / no Accompanying children: yes / no, nr.: \_\_\_\_\_ Price class hotel: \_\_\_\_\_

☐ definite registration ☐ not yet definite registration

Please complete and return this form as soon as possible to:

4th International Crustacea Congress, c/o Wil van Zijl, University of Amsterdam, Vakgroep SEP,  
P.O. Box 94766, 1090 GT Amsterdam, The Netherlands

By filling in and sending back this form, you will insure receipt of the 2nd Announcement.



## TCS E-mail Directory Additions & Changes

The first edition of TCS E-mail Directory was published in the May 1996 issue of the *Ecdysiast* (Vol. 15, No. 1). However, as pointed out in that issue, the directory included only about a sixth of the current TCS membership. Since then, a number of members have written with changes and corrections to the directory, or out of surprise that they were not included. Although we regret any oversight, we were not (and are still not) able to cross-check the directory against the official membership list. Instead the directory included only members that responded to the original two calls for addresses published in the newsletter (Vol. 13, No. 2; Vol. 14, No. 1). We are not certain when a second edition of the directory will be published. Until then, we will continue to print periodic changes and additions as appropriate, the first installment as below.

**Able, Larry**  
212 Westcott Bldg.  
Florida State University  
Tallahassee, FL 32306 USA  
BS: (904)644-1765  
FX: (904) 644-0172  
E-MAIL: labele@westcott.wes.fsu.edu

**Alikhan, Muhammad Akhtar**  
Dept. of Biology, Laurentian University  
Sudbury, ON P3E 2C6 CANADA  
BS: (705) 675-1151, ext. 2277  
FX: (705) 675-4859  
E-MAIL: malikhan@nickel.laurentian.ca

**Allen, Dennis M.**  
Baruch Marine Field Lab.  
and North Inlet-Winyah Bay NERR  
University of South Carolina  
PO Box 1630  
Georgetown, SC 29442 USA  
BS: (803) 546-3623  
E-MAIL: dallen@belle.baruch.sc Carolina.edu

**Bauer, Raymond T.**  
Department of Biology  
University of Southwestern Louisiana  
Lafayette, LA 70504 USA  
BS: (318) 482-6435  
FX: (318) 482-5834  
E-MAIL: rtbauer@usl.edu

**Belk, Denton**  
840 E. Mulberry Ave.  
San Antonio, TX 78212-3194 USA  
BS: (210) 732-8809  
FX: (210) 732-3943  
E-MAIL: dbelk@texas.net

**Berner, Dorothy B.**  
Dept. of Biology, TU 015-00  
Temple University  
Philadelphia, PA 19122 USA  
BS: (215) 204-8871  
FX: (215) 204-6646  
E-MAIL: v5418e@vm.temple.edu

**Boschi, Enrique E.**  
INIDEP - CC 175  
7600 Mar del Plata, ARGENTINA  
BS: 54-23-86-2404 or 86-1481  
FX: 54-23-86-1830  
E-MAIL: postmaster@inidep.edu.ar

**Bousfield, E.L.**  
Managing Editor  
Amphipacifica Research Publications  
611-548 Dallas Rd.  
Victoria, B.C., V8V 1B3 CANADA  
BS: (205) 380-3787  
E-MAIL: elbousf@mail.islandnet.com

**Boxshall, Geoff**  
Natural History Museum  
Cromwell Road  
LONDON, SW7 5BD UK  
BS: +44 (0) 171 938 9489  
FX: +44 (0) 171 938 9158  
E-MAIL: G.Boxshall@nhm.ac.uk

**Bueno, Sergio**  
Dept. of Zoology  
Institute of Bioscience  
University of Sao Paulo BRAZIL  
E-MAIL: sbueno@usp.br

**Cohen, Anne C.**  
Research and Collections  
Natural Hist. Mus. of Los Angeles Co.  
900 Exposition Blvd.  
Los Angeles, CA 90275 USA  
E-MAIL: acohen@ucla.edu

**Choy, Satish**  
Dept. of Natural Resources  
1345 Ipswich Road  
Rocklea, Queensland 4106 AUSTRALIA  
BS: (07) 3848 1504  
FX: (07) 3848 5191  
E-MAIL: choys@planet.mh.dpi.qld.gov.au

**Dahms, Hans-U.**  
Carl von Ossietzky Universität Oldenburg  
Fachbereich 7 (Biologie)  
D-26 111 Oldenburg FRG  
BS: 0441/798-3369  
FX: 0441/798-3250  
E-MAIL: hudahms@hrzl.pcnet.uni-oldenburg.de

**Felder, Darryl L.**  
Department of Biology and  
Laboratory for Crustacean Research  
University of Southwestern Louisiana  
Lafayette, LA 70504 USA  
BS: (318) 482-6753  
FX: (318) 482-5834  
E-MAIL: dlf4517@usl.edu

**Freire, Juan**  
Dept. de Biología Animal B. Vexetel e Exoloxia  
Universidade da Coruña  
Campus da Zapateira s/n,  
E-15071 A Coruña SPAIN  
BS: ++34-81-130000, ext. 2022, 2058  
FX: ++34-81-135641  
E-MAIL: jfreire@udc.es

**Gherardi, Francesca**  
BS: +39-55 22288216  
FX: +39-55 222565  
E-MAIL: gherardi@dbag.unifi.it

**Gilchrist, Sandra**  
Division of Natural Sciences  
New College  
Sarasota, Florida 34243 USA  
FX: (941) 359-4396  
E-MAIL: gilchris@virtu.sar.usf.edu

**Hart, C.W., Jr. (Bill)**  
IZ-NHB-163  
Smithsonian Institution  
Washington, DC 20560 USA  
BS: (202) 357-4679  
FX: (202) 357-3043  
E-MAIL: mnhiv008@sivm.si.edu

**Hoffman, Daniel L.**  
Biology Department  
Bucknell University  
Lewisburg, PA 17837 USA  
BS: (717) 524-1320  
FX: (717) 524-3760  
E-MAIL: hoffman@bucknell.edu

**Holsinger, John R.**  
Dept. of Biological Sciences  
Old Dominion University  
Norfolk, Virginia 23529-0266 USA  
BS: 804-683-3606  
FX: 804-683-5283  
E-MAIL: rh100f@viper.mgb.odu.edu



**Kensley, Brian**  
IZ-NHB-163  
Smithsonian Institution  
Washington, DC 20560 USA  
BS: (202) 357-4666  
FX: (202) 357-3043  
E-MAIL: mnhiv019@sivm.si.edu

**Lovett, Donald L.**  
Department of Biology  
The College of New Jersey  
Trenton, NJ 08650-4700  
BS: (609) 771-2876  
FX: (609) 771-2674  
E-MAIL: lovett@tcnj.edu

**Manning, R.B.**  
IZ-NHB 163  
Smithsonian Institution  
Washington, DC 20560 USA  
BS: (202) 357-4668  
FX: (202) 357-3043  
E-MAIL: rayb@patriot.net

**Norman, Christopher P.**  
Seikai Nat. Fish. Res. Inst.  
49 Kokubu-machi  
Nagasaki, 850 JAPAN  
E-MAIL: norman@snf.affrc.go.jp

**Paul, A.J.**  
Institute of Marine Science  
University of Alaska  
POB 730  
Seward, AK 99664 USA  
BS: (907) 224-5261  
FX: (907) 224-3392  
E-MAIL: FFAJP@aurora.alaska.edu

**Rayner, Nancy A.**  
Department of Zoology  
University of Durban Westville  
P. Bag X54001  
Durban, 4000 SOUTH AFRICA  
E-MAIL: nrayner@pixie.udw.ac.za

**Reid, Jan**  
IZ-NHB-163  
Smithsonian Institution  
Washington, DC 20560 USA  
BS: (202) 357-4674  
FX: (202) 357-3043  
E-MAIL: 74024.1511@compuserve.com

**Schizas, Nikolaos V.**  
Department of Biological Sciences  
University of South Carolina  
Columbia, SC 29208 USA  
BS: (803) 777-3942 or 777-3941  
FX: (803) 777-3935  
E-MAIL: schizas@biol.sc.edu

**Spears, Trisha**  
Dept. of Biological Science  
Florida State University  
Tallahassee, Florida 32306-2043 USA  
BS: (904) 644-1847  
FX: (904) 644-9829  
E-MAIL: spears@bio.fsu.edu

**Staton, Joe**  
Department of Biology  
UCLA  
Los Angeles, CA 90095-1606 USA  
E-MAIL: jstaton@ucla.edu

**Stebbins, Timothy D.**  
Marine Biology Laboratory  
City of San Diego Ocean Monitoring Program  
4918 North Harbor Drive, Suite 101  
San Diego, CA 92106 USA  
BS: (619) 692-4900  
FX: (619) 692-4902  
E-MAIL: tds@mwharbor.sannet.gov or  
tds@sddpc.sannet.gov

**Walossek, Dieter**  
Section for Biosystematic Documentation  
University of Ulm  
Liststrasse 3, D-89079 Ulm GERMANY  
BS: ++49-731-4014-150 or 151  
FX: ++49-731-4014-159  
E-MAIL: dieter.walossek@biologie.uni-ulm.de

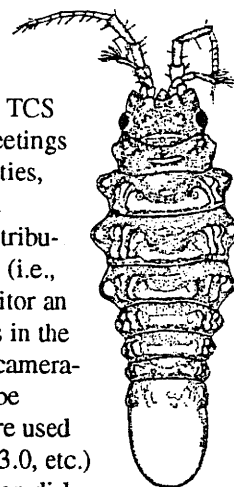
**Wetzer, Regina**  
Department of Biology  
University of South Carolina  
Columbia, SC 29208 USA or  
Grice Marine Laboratory  
University of Charleston  
205 Ft. Johnson  
Charleston, SC 29412 USA  
BS: (803) 777-3942 [USC]  
FX: (803) 777-3935 [USC]  
E-MAIL: rwetzer@vm.sc.edu [USC] or  
bruscar@cofc.edu [Grice]

**Wolfe, Steve**  
E-MAIL: Wolfe\_S@dep.state.fl.us

## From the Editor

The Crustacean Society depends on its members and interested nonmembers for supplying the information and news published in the society's newsletter. Any comments, suggestions, or criticisms regarding this or future issues will be greatly appreciated. Meanwhile, please keep the contributions coming.

The *Ecdysiast* is published twice a year, mailed with the May and November issues of the *Journal of Crustacean Biology*. Submissions for the spring (May) newsletter should be in by mid-March, while those for the fall (November) newsletter should be in by mid-September. Anything of interest to the TCS membership is welcome, including notices of upcoming meetings and symposia, regional updates, research and job opportunities, important research findings, new publications, other related societies, and basically all things crustacean. Although contributions may be submitted in any form, electronic submissions (i.e., e-mail, on disk) are strongly encouraged. This saves the editor an enormous amount of time and minimize transcription errors in the process. Graphical images should be submitted on disk or camera-ready copy by mail. Camera-ready graphics will probably be scanned into the final document. Please specify the software used (e.g., Wordperfect 6.1 windows, Word 5.1 Mac, Photoshop 3.0, etc.) or type of file (e.g., EPS, TIFF, etc.) for material submitted on disk. This edition of the newsletter was prepared using PageMaker 5.0/6.0 for the Mac; graphics were scanned in using Deskscan, and then modified using either Desktopaint or Photoshop. Submit all materials directly to the editor via e-mail or at the address listed at the bottom of page 1 of this newsletter (Tim Stebbins, *Ecdysiast* Editor, tds@sddpc.sannet.gov or tds@mwharbor.sannet.gov).



# Addressbook of Crustacean Researchers of Latin America

Compiled by Elva Escobar-Briones (Vers. 1, August 1996)

## ARGENTINA

### Aggio, Juan

Departamento de Biología  
Facultad de Cs. Exactas y Nat. Universidad  
de Buenos Aires (FCEyN UBA)  
Ciudad Universitaria - Núñez  
(1428) Buenos Aires ARGENTINA  
Fax: (54) 1 7820620

### Aguirre Urreta, María B.

Departamento de Geología  
Facultad de Cs. Exactas y Nat. Universidad  
de Buenos Aires (FCEyN UBA)  
Ciudad Universitaria - Núñez  
(1428) Buenos Aires ARGENTINA  
Fax: (54) 1 7820620

### Alonso, Gloria M.

Museo Argentino de Ciencias Naturales  
"Bernardino Rivadavia"  
Av. Angel Gallardo 470  
(1405) Buenos Aires ARGENTINA  
Fax: (54) 1 9825243 or (54) 1 9824494  
E-mail: glalonso@muanbe.gov.ar

### Amin, Oscar

Centro Austral de Investigaciones Científicas  
(CADIC)  
C.C. 92, (9410) Ushuaia  
Pcia. Tierra del Fuego ARGENTINA  
Fax: (54) 901 30644  
E-mail: amin@cadica.edu.ar

### Balseiro, Esteban

Centro Regional Universitario Bariloche  
Univ. Nacional del Comahue (CRUB UNC)  
C.C. 1336, (8400) San Carlos de Bariloche  
Pcia. Río Negro ARGENTINA  
Fax: (54) 944 22111

### Bastida, Ricardo

Facultad de Cs. Exactas y Nat. Universidad  
Nacional de Mar del Plata (FCEyN UNMdP)  
Funes 3350, C.C. 1245, (7600) Mar del Plata  
Pcia. Buenos Aires ARGENTINA

### Battisoni, Patricia

Facultad de Cs. Naturales y Museo  
Universidad de La Plata (FCNyM UNLP)  
Paseo del Bosque s/n, (1900) La Plata  
Pcia. Buenos Aires ARGENTINA  
Fax: (54) 21 257527

### Boschi, Enrique E.

CONICET  
Inst. de Investigaciones y Desarrollo Pesquero  
Casilla de correo 175  
Mar del Plata 7600 ARGENTINA  
Tel: 54.23.862404; Fax: 54.23.861830  
E-mail: postmaster@inidep.edu.ar

### Calcagno, Javier

Departamento de Biología  
Facultad de Cs. Exactas y Nat. Universidad  
de Buenos Aires (FCEyN UBA)  
Ciudad Universitaria - Núñez  
(1428) Buenos Aires ARGENTINA  
Fax: (54) 1 7820620

### Ceraolo, Mariana

Facultad de Cs. Naturales e Universidad  
Nacional de Tucumán (FCN UNT)  
Instituto Miguel Lillo  
Miguel Lillo 205  
(4000) San Miguel de Tucumán  
Pcia. Tucumán ARGENTINA  
Fax: (54) 81 330633

### Cervino, Claudio

Departamento de Biología  
Facultad de Cs. Exactas y Nat. Universidad  
de Buenos Aires (FCEyN UBA)  
Ciudad Universitaria - Núñez  
(1428) Buenos Aires ARGENTINA  
Fax: (54) 1 7820620  
E-mail: claudio@biolo.bg.fcen.uba.ar

### Cesar, Inés I.

ILPLA Instituto de Limnología  
"Dr. Raúl A. Ringuelet"  
Av. Calchaquí 23.500 (Ex. YPF)  
Florencio Varela, C.C. 712, (1900) La Plata  
Pcia. Buenos Aires ARGENTINA

### Cohen, Graciela

Departamento de Biología Facultad de Cs.  
Exactas y Nat. Universidad de Buenos Aires  
(FCEyN UBA)  
Ciudad Universitaria - Núñez  
(1428) Buenos Aires ARGENTINA  
Fax: (54) 1 7820620  
E-mail: cohen@biolo.bg.fcen.uba.ar

### Comoglio, Laura I.

Centro Austral de Investigaciones Científicas  
(CADIC)  
C.C. 92, (9410) Ushuaia  
Pcia. Tierra del Fuego ARGENTINA  
Fax: (54) 901 30644

### Cuartas, Elena I.

Facultad de Cs. Exactas y Nat.  
Universidad Nacional de Mar del Plata  
(FCEyN UNMdP)  
Funes 3350, C.C. 1245, (7600) Mar del Plata  
Pcia. Buenos Aires ARGENTINA

### DeLorenzi, Alejandro

FCEyN UBA Departamento de Biología  
Facultad de Cs. Exactas y Nat.  
Universidad de Buenos Aires  
Ciudad Universitaria - Núñez  
(1428) Buenos Aires ARGENTINA  
Fax: (54) 1 7820620

### Dimant, Beatriz

Departamento de Biología  
Facultad de Cs. Exactas y Nat. Universidad  
de Buenos Aires (FCEyN UBA)  
Ciudad Universitaria - Núñez  
(1428) Buenos Aires ARGENTINA  
Fax: (54) 1 7820620

### Dippolito, Andrea

Centro de Estudios Parasitológicos y de  
Vectores (CEPAVE)  
Calle 2 Nro. 584, entre 43 y 44, (1900) La Plata  
Pcia. Buenos Aires ARGENTINA

### Fenucci, Jorge

Instituto Nacional de Investigació y Desarrollo  
Pesquero (INIDEP)  
C.C. 175, (7600) Mar del Plata  
Pcia. Buenos Aires ARGENTINA  
Fax: (54) 23 861830 or (54) 23 861831

### Garceron, Ignacio Victor

Gascon 953C (7600)  
Mar del Plata ARGENTINA  
Tel: 54.23.51.9691  
E-mail: garceron@bart.uni-mdp.edu.ar

### Giangiobbe, María A.

Facultad de Cs. Exactas y Nat.  
Universidad Nacional de Mar del Plata  
(FCEyN UNMdP)  
Funes 3350, C.C. 1245, (7600) Mar del Plata  
Pcia. Buenos Aires ARGENTINA

### Godoy, Adriana

Departamento de Biología  
Facultad de Cs. Exactas y Nat. Universidad  
de Buenos Aires (FCEyN UBA)  
Ciudad Universitaria - Núñez  
(1428) Buenos Aires ARGENTINA  
Fax: (54) 1 7820620



**Gomez-Simes, Elena**

UNPSJB (Sede Pto. Madryn)  
Universidad Nacional de la Patagonia  
"San Juan Bosco" Blvd. Brown s/n  
(9120) Puerto Madryn  
Pcia. Chubut ARGENTINA

**Grosso, Luis E.**

Fac. de Cs. Naturales e Instituto Miguel Lillo  
Universidad Nacional de Tucumán (FCN UNT)  
Miguel Lillo 205  
(4000) San Miguel de Tucumán  
Pcia. Tucumán ARGENTINA

**Hermitte, Gabriela**

Departamento de Biología  
Facultad de Cs. Exactas y Nat. Universidad  
de Buenos Aires (FCEyN UBA)  
Ciudad Universitaria - Núñez  
(1428) Buenos Aires ARGENTINA  
Fax: (54) 1 7820620

**Hoffmeyer, Monica Susana**

Instituto Argentino de Oceanografía  
Ave. Alem 53  
Bahia Blanca 8000 ARGENTINA  
Tel: 91.23.555; Fax: 91.55.3933  
E-mail: bmhoffme@arcriba.edu.ar

**Irigoyen, Hugo**

Museo Argentino de Ciencias Naturales (MACN)  
"Bernardino Rivadavia"  
Av. Angel Gallardo 470  
(1405) Buenos Aires ARGENTINA  
Fax: (54) 1 9825243 or (54) 1 9824494 or  
(54) 1 9820306

**Locascio de Mitrovich, Cecilia**

Fac. de Cs. Naturales e Instituto Miguel Lillo  
Univ. Nacional de Tucumán (FCN UNT)  
Miguel Lillo 205  
(4000) San Miguel de Tucumán  
Pcia. Tucumán ARGENTINA  
Fax: (54) 81 330633

**Lopez, Laura S.**

Laboratorio de Fisiología Comparada  
Ciudad Universitaria, Pab. II (1428)  
Nunez, Capital Federal ARGENTINA  
Tel: 54.1.628.6528; Fax: 54.1.782.0620  
E-mail: laura@biolo.bg.fcen.uba.ar

**Lopretto, Estela C.**

Fac. de Cs. Exactas y Naturales Universidad  
Nacional de La Pampa (FCNyM UNLP)  
Uruguay 151  
(6300) Santa Rosa  
Pcia. La Pampa ARGENTINA  
Fax: (54) 954 32679

**Lovrich, Gustavo A.**

Centro Austral de Investigaciones Científicas  
(CADIC)  
C.C. 92, (9410) Ushuaia  
Pcia. Tierra del Fuego ARGENTINA  
Fax: (54) 901 30644  
E-mail: lovrich@cadica.edu.ar

**Luquet, Carlos**

Departamento de Biología  
Fac. de Cs. Exactas y Nat. Universidad de  
Buenos Aires (FCEyN UBA)  
Ciudad Universitaria - Núñez  
(1428) Buenos Aires ARGENTINA  
Fax: (54) 1 7820620

**Maldonado, Héctor**

Departamento de Biología  
Fac. de Cs. Exactas y Nat. Universidad de  
Buenos Aires (FCEyN UBA)  
Ciudad Universitaria - Núñez  
(1428) Buenos Aires ARGENTINA  
Fax: (54) 1 7820620

**Mallo, Juan Carlos**

Fac. de Cs. Exactas y Nat. Universidad  
Nacional de Mar del Plata (FCEyN UNMdP)  
Funes 3350, C.C. 1245, (7600) Mar del Plata  
Pcia. Buenos Aires ARGENTINA

**Marinone, María C.**

Departamento de Biología  
Fac. de Cs. Exactas y Nat. Universidad de  
Buenos Aires (FCEyN UBA)  
Ciudad Universitaria - Núñez  
(1428) Buenos Aires ARGENTINA  
Fax: (54) 1 7820620  
E-mail: marinone@biolo.bg.fcen.uba.ar

**Marschoff, Enrique**

Instituto Antártico Argentino (IAA)  
Cerrito 1248  
(1010) Buenos Aires ARGENTINA  
Fax: (54) 1 8122039

**Medesani, Daniel A.**

Departamento de Biología  
Fac. de Cs. Exactas y Nat. Universidad de  
Buenos Aires (FCEyN UBA)  
Ciudad Universitaria - Núñez  
(1428) Buenos Aires ARGENTINA  
Fax: (54) 1 7820620

**Menu Marque, Silvina A.**

Departamento de Biología  
Fac. de Cs. Exactas y Nat. Universidad de  
Buenos Aires (FCEyN UBA)  
Ciudad Universitaria - Núñez  
(1428) Buenos Aires ARGENTINA  
Fax: (54) 1 7820620  
E-mail: silvina@biolo.bg.fcen.uba.ar

**Momo, Fernando R.**

Universidad Nacional de Luján (UNL)  
Laboratorio de Ecología  
Departamento de Ciencias Básicas  
C.C. 221, (6700) Luján  
Pcia. Buenos Aires ARGENTINA  
Fax: (54) 323 25795  
E-mail: ecologia@unlu01.edu.ar

**Montserrat, José M.**

Departamento de Biología  
Fac. de Cs. Exactas y Nat. Universidad de  
Buenos Aires (FCEyN UBA)  
Ciudad Universitaria - Núñez  
(1428) Buenos Aires ARGENTINA  
Fax: (54) 1 7820620  
E-mail: jose@biolo.bg.fcen.uba.ar

**Paggi, Juan C.**

Instituto Nacional de Limnología (INALI)  
José Maciá 1933  
3016 Santo Tomé  
Pcia. Santa Fe ARGENTINA  
Fax: (54) 42 750394

**Pedreira, Eugenia**

Departamento de Biología  
Fac. de Cs. Exactas y Nat. Universidad de  
Buenos Aires (FCEyN UBA)  
Ciudad Universitaria - Núñez  
(1428) Buenos Aires ARGENTINA

**Peralta, Marcela A.**

Fac. de Cs. Naturales e Instituto Miguel Lillo  
Univ. Nacional de Tucumán (FCN UNT)  
Miguel Lillo 205  
(4000) San Miguel de Tucumán  
Pcia. Tucumán ARGENTINA  
Fax: (54) 81 330633

**Pereyra, Patricia**

Departamento de Biología  
Fac. de Cs. Exactas y Nat. Universidad de  
Buenos Aires (FCEyN UBA)  
Ciudad Universitaria - Núñez  
(1428) Buenos Aires ARGENTINA

**Perez, Miguel**

Departamento de Biología  
Fac. de Cs. Exactas y Nat. Universidad de  
Buenos Aires (FCEyN UBA)  
Ciudad Universitaria - Núñez  
(1428) Buenos Aires ARGENTINA

**Petricella, Ana María**

Fac. de Cs. Exactas y Nat. Universidad  
Nacional de Mar del Plata (FCEyN UNMdP)  
Funes 3350  
C.C. 1245  
(7600) Mar del Plata  
Pcia. Buenos Aires ARGENTINA

**Pettovello, Alejandro D.**

Centro de Investigaciones de Puerto Deseado  
(CIPD)  
Alte. Brown y Colón, 9050 Puerto Deseado  
Pcia. Santa Cruz ARGENTINA  
Fax: (54) 967 70402  
E-mail: rpetto@criba.edu.ar

**Pilati, Alberto**

Fac. de Cs. Exactas y Naturales Universidad  
Nacional de La Pampa (FCEyN UNLPampa)  
Uruguay 151  
(6300) Santa Rosa  
Pcia. La Pampa ARGENTINA  
Fax: (54) 954 32679

**Ramirez, Fernando**

Instituto Nacional de Investigación y Desarrollo  
Pesquero (INIDEP)  
C.C. 175  
(7600) Mar del Plata  
Pcia. Buenos Aires ARGENTINA  
Fax: (54) 23 861830 or (54) 23 861831

**Roccatagliata, Daniel C.**

Departamento de Ciencias Biológicas  
Facultad de Ciencias Exactas y Naturales  
Pabellón 2, 4 Piso  
Ciudad Universitaria 1428  
Ciudad de Buenos Aires ARGENTINA  
Fax: 54.23.79.1486  
E-mail: rocca@biolo.bg.fcen.uba.ar

**Rodriguez, Enrique Marcelo**

Departamento de Ciencias Biológicas  
FCE y N  
Pabellón 2, 4 Piso  
Ciudad Universitaria 1428  
Ciudad de Buenos Aires ARGENTINA  
Tel: 541.781.8016; Fax: 541.790.9591  
E-mail: enrique@biolo.bg.fcen.uba.ar

**Rodriguez Gil, Sergio G.**

Departamento de Biología  
Fac. de Cs. Exactas y Nat. Universidad de  
Buenos Aires (FCEyN UBA)  
Ciudad Universitaria - Núñez  
(1428) Buenos Aires ARGENTINA  
Fax: (54) 1 7820620  
E-mail: rodrigil@biolo.bg.fcen.uba.ar

**Rodriguez Moreno, Paula A.**

Departamento de Biología  
Fac. de Cs. Exactas y Nat. Universidad de  
Buenos Aires (FCEyN UBA)  
Ciudad Universitaria - Núñez  
(1428) Buenos Aires ARGENTINA  
Fax: (54) 1 7820620  
E-mail: paula@biolo.bg.fcen.uba.ar

**Romano, Arturo**

Departamento de Biología  
Fac. de Cs. Exactas y Nat. Universidad de  
Buenos Aires (FCEyN UBA)  
Ciudad Universitaria - Núñez  
(1428) Buenos Aires ARGENTINA  
Fax: (54) 1 7820620

**Roux, Ana María**

INIDEP Instituto Nacional de Investigación  
y Desarrollo Pesquero  
C.C. 175, (7600) Mar del Plata  
Pcia. Buenos Aires ARGENTINA  
Fax: (54) 23 861830 or (54) 23 861831

**Roux, Juan Pablo**

Instituto de Ictiología del Nordeste  
Fac. de Ciencias Veterinarias Universidad  
Nacional del Nordeste (FCV UNNE)  
Sargento Cabral 2139, Corrientes  
Pcia. Corrientes ARGENTINA

**Saraco, Miriam**

Departamento de Biología  
Fac. de Cs. Exactas y Nat. Universidad de  
Buenos Aires (FCEyN UBA)  
Ciudad Universitaria - Núñez  
(1428) Buenos Aires ARGENTINA  
Fax: (54) 1 7820620

**Scelzo, Marcelo A.**

Departamento de Ciencias Marinas  
Universidad Nacional del Mar del Plata  
Funes 3350, C.C. 1245, (7600) Mar del Plata  
Pcia. Buenos Aires ARGENTINA

**Schuldt, Miguel**

Facultad de Cs. Naturales y Museo  
Universidad de La Plata (FCNyM UNLP)  
Paseo del Bosque s/n, (1900) La Plata  
Pcia. Buenos Aires ARGENTINA  
Fax: (54) 21 257527

**Spivak, Eduardo D.**

Profesor en Zoología Departamento de  
Biología  
Facultad de Ciencias Exactas y Naturales  
Universidad Nacional de Mar del Plata  
Casilla de Correo 1216  
7600 Mar del Plata ARGENTINA  
Fax: 54.23.79.1486  
E-mail: espivak@uni-mdp.edu.ar

**Stella, Vivian S.**

Departamento de Biología  
Fac. de Cs. Exactas y Nat. Universidad de  
Buenos Aires (FCEyN UBA)  
Ciudad Universitaria - Núñez  
(1428) Buenos Aires ARGENTINA  
Fax: (54) 1 7820620  
E-mail: vivian@biolo.bg.fcen.uba.ar

**Taberner, Roberto**

Dirección particular:  
Marqués de Loreto 2363  
(1712) Castellar  
Pcia. de Buenos Aires ARGENTINA  
Tel: 629-2006

**Tomsic, Daniel**

Departamento de Biología  
Fac. de Cs. Exactas y Nat. Universidad de  
Buenos Aires (FCEyN UBA)  
Ciudad Universitaria - Núñez  
(1428) Buenos Aires ARGENTINA  
Fax: (54) 1 7820620

**Torres Jorda, Martín**

Departamento de Biología  
Fac. de Cs. Exactas y Nat. Universidad de  
Buenos Aires (FCEyN UBA)  
Ciudad Universitaria - Núñez  
(1428) Buenos Aires ARGENTINA  
Fax: (54) 1 7820620  
E-mail: torresjo@biolo.bg.fcen.uba.ar

**Vazquez, Stella M.**

Departamento de Biología  
Fac. de Cs. Exactas y Nat. Universidad de  
Buenos Aires (FCEyN UBA)  
Ciudad Universitaria - Núñez  
(1428) Buenos Aires ARGENTINA  
Fax: (54) 1 7820620

**Vega, Patricia M.**

Centro Regional Universitario Bariloche  
Univ. Nacional del Comahue (CRUB UNC)  
C.C. 1336, (8400) San Carlos de Bariloche  
Pcia. Río Negro ARGENTINA  
Fax: (54) 944 22111

**Villagra de Gamundi, Alcira**

Fac. de Cs. Naturales e Instituto Miguel Lillo  
Univ. Nacional de Tucumán (FCN UNT)  
Miguel Lillo 205  
(4000) San Miguel de Tucumán  
Pcia. Tucumán ARGENTINA  
Fax: (54) 81 330633

**Vinuesa, Julio H.**

Centro Austral de Investigaciones  
Científicas (CADIC)  
C.C. 92, (9410) Ushuaia  
Pcia. Tierra del Fuego ARGENTINA  
Fax: (54) 901 30644

**BRAZIL****Buckup, Georgina Bond**

Universidade Federal do Rio Grande do Sul  
Inst. Biociências Depto. Zoologia  
Av. Paulo Gama 40  
Porto Alegre, RGS 90040-060



**Buckup, Ludwig**

Universidade Federal do Rio Grande do Sul  
Inst. Biociencias Depto. Zoologia  
Av. Paulo Gama 40  
Porto Alegre, RGS 90040-060 BRAZIL  
Tel: 512. 41.4698

**D'Incao, Fernando**

Rua 167-No. 49  
Rio Grande, RS 96203-230 BRAZIL  
Tel: 55.0532.321460; Fax: 55.0532.323659

**Da Rocha, Carlos Eduardo F.**

Depto. Zoologia, Inst. Biociencias  
Univ. Sao Paulo  
C.P. 20520  
Sao Paulo 01498 BRAZIL

**Franzoso, Adilson**

Departamento de Zoologia  
I.B. UNESP-Campus de Botucatu  
C.P. 502  
Botucatu-SP 18.618.000 BRAZIL

**Garcia, Anna Luiza Brossi**

Univ. Est. Paul. "Julio Mesq Filho"  
UNESP Inst. Biocien. Dept. Zoologia  
C.P. 199  
Rio Claro, Sao Paulo CEP 13.506.900  
BRAZIL

**Gesterira, Teresa Cristina V.**

Laboratorio de Ciencias do Mar  
Av. da Abolicao, 3207  
Fortaleza CE 60.000 BRAZIL  
Tel: 85.244.15.15

**Iwai, Montonaga**

Inst. Ocean. da Univ. de Sao Paulo  
Cidade Universitaria, Butanta  
Sao Paulo CEP 05508 BRAZIL

**Mantellatto, Fernando Luis. M.**

Departamento Biologia  
FFCL-USP-Campus Ribeirao Preto  
Av. dos Bandeirantes 3900  
Ribeirao Preto, SP 14040-901 BRAZIL  
Tel: 16.633.1010; Fax: 16.633.5015

**Masunari, Setuko**

Universidade Federal do Parana  
Curso de Pos Grad. em Zoologia  
Caixa Postal 30334  
Curitiba, CEP 81500 BRAZIL  
Tel: 55.266.36333

**McNamara, John C.**

Depto. Biol. FFCL  
Universidade de Sao Paulo  
Sao Paulo, R.P. 14049 BRAZIL

**Moreira, Roberto A. Roche**

Rua Barata Ribeiro, 193 Apto. 201  
Copacabana CEP. 22011  
Rio de Janeiro R.J. BRAZIL

**Muller, Yara Maria Rauh**

Departamento Biologia  
Universidade Federal Santa Catarina  
Campus Universitario-Trinidade  
Florianopolis Santa Catarina 88049 BRAZIL

**Negreiros-Franzoso, Maria Lucia**

Departamento de Zoologia  
I.B. UNESP-Campus de Botucatu  
C.P. 502  
Botucatu-SP 18.618.000 BRAZIL

**Pires-Vanin, Ana Maria Setubal**

Univ. de Sao Paulo, Instit. Oceano  
Cidade Universitaria- Butantan  
Sao Paulo CEP 05508 BRAZIL  
Tel: 55.011.210.4311; Fax: 55.011.210.3092

**Rodrigues, Sergio de Almeida**

Departamento de Ecologia Geral  
Instituto de Biociencias-USP  
C.P. 11.461 CEP 05421 BRAZIL

**Santos, Sandro**

Dept. de Zoologia  
IB-UNESP Campus de Botucatu  
Botucatu, SP 18618-0000 BRAZIL

**Siqueira Bueno, Sergio Luiz**

Dept. Zoology  
Inst. Biosciences-USP  
Caixa Postal 20520  
Sao Paulo 01452.990 BRAZIL

**Tavares, Marcos D. Siqueira**

Universidade Santa Ursula  
Dept. Biologia Animal  
Rua Fernando Ferrari, 75  
Rio de Janeiro, RJ 22234-040 BRAZIL

**Vega-Perez, L. Amelia**

Instituto Oceanografico da USP  
Praça do Oceanografico 191, Butanta  
Sao Paulo, SP CEP 05508-900 BRAZIL

**CHILE****Carvacho, Alberto**

Sinergos Consultores  
Casilla 1282  
Valdivia CHILE  
Tel: 56.63.2131354

**Dupre, E.**

Lab Biol. Reproduccion  
Universidad Catolica del Norte

P.O. Box 117, Coquimbo CHILE

Fax: 5651.311287

E-mail: edupre@socompa.cecun.ucn.cl

**Gonzalez, Exequiel B.**

P.O. Box 189  
Coquimbo CHILE

**Jara, Carlos G.**

Instituto de Zoologia  
Casilla 567  
Valdivia CHILE

**Lesn Leiva, Rafael**

Universidad Catolica del Norte  
Coquimbo CHILE  
E-mail: ecolmar@nevados.cecun.ucn.cl

**Romero, Raul Castro**

Depto. Acuicultura  
Universidad de Antofagasta  
Casilla 170  
Antofagasta CHILE

**Rudolph, Erich**

Departamento de Ciencias Basicas  
Universidad de los Lagos  
Casilla 933  
Osorno CHILE  
Tel: 56.64.235.377; Fax: 56.64.239.517  
E-mail: erudolf@puyehue.di.ulagos.cl

**Stotz, Wolfgang**

Universidad Catolica del Norte  
Coquimbo CHILE

**COLOMBIA****Ramos, Gabriel E.**

Universidad del Valle  
Dept. de Biologia  
Apartado Aereo 25360  
Cali COLOMBIA

**CUBA****Iglesias, Eugenio Diaz**

Centro de Investigaciones Marinas  
Universidad de la Habana  
Avda. 1A 2808, Miramar 13  
La Habana CUBA

**EQUADOR****Romero Martinez, Xavier**

P.O. Box. (0901)5554  
Ficus 302 y Tercera  
Guayaquil ECUADOR or  
Centro Aereo 1233  
P.O. Box 522970, Miami, Fl 33152.2970  
Fax: 593.4.88.2469

**Vicuna Benitez, George Omar**  
Cdda. Las Acacias, Bloque A-4 Dept. 103  
Guayaquil ECUADOR  
Tel: 593.4.44.9387  
E-mail: gvicuna@espol.edu.ec

# MEXICO

**Abreu-Grobois, F. Alberto**  
Estacion Mazatlan  
Instituto de Ciencias del Mar y Limnologia  
Universidad Nacional Autonoma de Mexico  
A.P. 811, Mazatlan, Sinaloa 82000 MEXICO

**Arreguin Sanchez, Francisco**  
CICIMAR-IPN  
Apdo. Post. 592, 23000 La Paz, B.C.S. MEXICO  
Tel: 52.1112.253.44, 253.66; Fax: 52.112.253.22  
E-mail: farregui@vmredipn.ipn.mx

**Barba Macias, Everardo**  
Laboratorio de Ecologia del Bentos  
Instituto de Ciencias del Mar y Limnologia  
UNAM Apdo. Postal 70-305  
04510 Mexico, D.F. MEXICO  
Tel: 525. 622.5835; Fax: 525.616.0748  
E-mail: barba@mar.icmyl.unam.mx

**Briones-Fourzan, Patricia**  
Estacion Puerto Morelos  
Instituto de Ciencias del Mar y Limnologia  
Universidad Nacional Autonoma de Mexico  
A.P. 1152, Cancun, Q. Roo 77500 MEXICO  
E-mail: briones@mar.icmyl.unam.mx

**Campos, Ernesto**  
Universidad Autonoma de Baja California  
Facultad de Ciencias  
A. Postal 2300  
Ensenada, B.C. MEXICO or  
4492 Camino de la Plaza (Ste. ESE. 11108)  
San Ysidro, CA 92173-3097 USA  
E-mail: ecampos@bahia.ens.uabc.mx

**Cantú Barriga, Antonio**  
Independencia 1209-c  
Col. Centro, La Paz, B.C.S. MEXICO  
Tel: 112.3.4318; Fax: 112.3.4318  
E-mail: isla@balandra.uabcs.mx

**Castro de Pomona, Peter**  
E-mail: pcastro@csupomona.edu

**Correa S., Francisco**  
Laboratorio de Acuicultura  
Instituto de INvestigaciones Oceanologicas  
Universidad Autonoma de Baja California  
Carretera Tijuana-Ensenada Km 1107  
22800 Ensenada, B.C. MEXICO  
Tel: 617.44.601 ext. 106; Fax: 617.45.303  
E-mail: correa@bahia.ens.uabc.mx

**Diaz R., Ajax R.**  
Proyecto Fauna Arrecifal  
Universidad Autonoma de Baja California Sur  
Km 5.5. Carretera al Sur, Apdo. Postal 19-B  
23080 La Paz, B.C.S. MEXICO  
E-mail: adiaz@calafia.uabcs.mx

**Escobar Briones, Elva G.**  
Laboratorio de Ecologia del Bentos  
Instituto de Ciencias del Mar y Limnologia  
Universidad Nacional Autonoma de Mexico  
A. Postal 70-305, 04510 Mexico, D.F. MEXICO  
Tel: (525) 622.5835; Fax: (525) 616.0748  
E-mail: escobri@mar.icmyl.unam.mx

**Garcia Garza, Ma. Elena**  
Laboratorio de Artropodos  
Facultad de Ciencias Biologicas  
Universidad Autonoma de Nuevo Leon  
A.P. N6 Suc-F Cd. Universitaria  
San Nicolas de los Garza  
66450 Nuevo Leon MEXICO  
Tel: 8.376.39.23; Fax: 8.376.28.113  
E-mail: margarci@ccr.dsi.uanl.mx

**Gomez Gutierrez, Jaime**  
Centro Interdisciplinario de Ciencias Marinas  
Departamento de Plancton y Ecologia Marina  
Apdo. Postal 592  
La Paz, B.C.S. 23000 MEXICO  
Tel: 52.112. 253.66, 253.44 ext. 24336  
Fax: 52. 253.22  
E-mail: jgomez@vmredipn.ipn.mx

**Hendrickx, Michel, E.**  
Estacion Mazatlan  
Instituto de Ciencias del Mar y Limnologia  
Universidad Nacional Autonoma de Mexico  
A.P. 811, Mazatlan, Sinaloa 82000 MEXICO  
Tel: 85.28.45 al 48, 81.66.80 y 82 55.46;  
Fax: 82.61.33 y 82.55.21  
E-mail: michel@mar.icmyl.unam.mx

**Hernandez Valdez, Victor Daniel**  
Apdo. Postal 646  
CICIMAR, La Paz, B.C.S. MEXICO  
Tel: 112.253.44; Fax: 112.253.22  
E-mail: vhnandez@vmredipn.ipn.mx

**Lozano Alvarez, Enrique**  
Estacion Puerto Morelos  
Instituto de Ciencias del Mar y Limnologia  
Universidad Nacional Autonoma de Mexico  
A.P. 1152, Cancun, Q. Roo 77500 MEXICO

**Macias Regalado, Emilio**  
Estacion Mazatlan  
Instituto de Ciencias del Mar y Limnologia  
Universidad Nacional Autonoma de Mexico  
A.P. 811, Mazatlan  
Sinaloa 82000 MEXICO

**Maeda-Martinez, Alejandro M.**  
Rio Danubio 436, Col. Navarro  
Torreon, Coahuila 27010 MEXICO  
Tel: 138030

**Manrique, Fernando A.**  
School of Marine Sciences  
P.O. Box 484  
Guaymas, Sonora 85400 MEXICO

**Mejia-Ortiz, Luis Manuel**  
Av. del trabajo No. 13306  
Col. Vicente Guerrero  
C.P. 43630, Tulancingo, Hidalgo MEXICO  
Tel: 775.3.6967; 724.5222; Fax: 723.5469  
E-mail: vpja4422@cueyatl.uam.mx

**Mora, Idalia**  
Univ. Michoacana de San Nicolas de Hidalgo  
Morelia, Michoacan MEXICO  
E-mail: jortega@eus.ccu.umich.mx

**Raz-Guzman Macbeth, Andrea**  
Laboratorio de Ecologia del Bentos  
Instituto de Ciencias del Mar y Limnologia  
UNAM A.P. 70-305  
0451 Mexico, D.F. MEXICO  
Tel: (525) 622.5835; Fax: (525) 616.0748  
E-mail: andrea@mar.icmyl.unam.mx

**Rios, Ruben**  
A.P. 1946 or Calle Monaco 1153  
Fraccionamiento Mediterraneo  
Ensenada, B.C. 22810 MEXICO  
Tel: 52.6117.4 33.13;  
E-mail: rrios@cicese.mx

**Rodriguez-Almaraz, Gabino A.**  
Laboratorio de Artropodos  
Facultad de Ciencias Biologicas  
Universidad Autonoma de Nuevo Leon  
A.P. 105-F Cd. Universitaria  
San Nicolas de los Garza  
66450 Nuevo Leon MEXICO  
Tel: 8.352.15.80; Fax: 8.352.42.45  
E-mail: grodriugu@ccr.dsi.uanl.mx

**Roman Contreras, Ramiro**  
Instituto de Ciencias del Mar y Limnologia  
Universidad Nacional Autonoma de Mexico  
A. Postal 70-305  
04510 Mexico, D.F. MEXICO

**Rosa Velez, Jorge de la**  
Facultad de Ciencias Marinas  
U.A.B.C., A.P. 453  
Ensenada, B.C. 22800 MEXICO or  
4492 Camino de la Plaza Suite ESE 1132  
San Ysidro, CA 92173  
Tel: 617.445.70 ext. 202; Fax: 617.441.03  
E-mail: jdrosa@bahia.ens.uabc.mx





**Rosas, Carlos**

Laboratorio de Ecofisiología  
Departamento de Biología  
Facultad de Ciencias, UNAM  
Mexico D.F. 04510 MEXICO

**Sanchez Martinez, Alberto de Jesus**

Laboratorio de Ecología del Bentos  
Instituto de Ciencias del Mar y Limnología  
UNAM A.P. 70-305  
045110 Mexico, D.F. MEXICO  
Tel: (525) 622.5800; Fax: (525) 616.0748  
E-mail: sanchezm@mar.icmyl.unam.mx

**Sanchez Ortiz, Carlos, A.**

U.A.B.C.S. Area de Ciencias del Mar  
A.P. 19-B  
C.P. 23080  
La Paz, B.C.S. MEXICO  
Tel: 52.112.1.111.40; Fax: 52.112.1.18.80

**Suarez Morales, Eduardo**

ECOSUR  
Colegio de Frontera Sur  
A. Postal 424  
Chetumal Q. Roo 77000 MEXICO

**Soto Gonzalez, Luis A.**

Laboratorio de Ecología del Bentos  
Instituto de Ciencias del Mar y Limnología  
UNAM A.P. 70-305  
04510 Mexico, D.F. MEXICO  
Tel: (525) 622.5797; Fax: (525) 616.0748  
E-mail: lasg@mar.icmyl.unam.mx

**Torrentera Blanco, Laura**

Apdo. Postal 762  
Toluca, Estado de Mexico 50000 MEXICO

**Vega, Francisco J.**

Instituto de Geología  
Universidad Nacional Autónoma de México  
Ciudad Universitaria Coyoacán  
Mexico, D.F. 04510 MEXICO  
Tel: 525.550.6644

**Viccon-Pale, Jose A.**

Apdo. Postal 70-458  
Ciudad Universitaria  
04510 Mexico, D.F. MEXICO

**Villalobos Hiriart, Jose Luis**

Colección de Carcinología  
Departamento de Zoología  
Instituto de Biología, UNAM  
A.P. 70-153  
C.P. 04510 Mexico  
D.F. MEXICO  
Tel: 525.550.5712 ext. 315;  
Fax: 525.550.0164  
E-mail: hiriart@servidor.unam.mx

**PANAMA****Angulo, Itzel D.**

Aptdo. 6-2975  
El Dorado PANAMA

**PERU****Kameya K., Albertina**

Instituto del Mar del Peru  
Apartado 22, Callao PERU

**PUERTO RICO****Holmquist, Jeff G.**

Department of Marine Science  
University of Puerto Rico  
Mayaguez P.O. Box 908  
Lajas 00667 PUERTO RICO

**Rios Jara, Eduardo**

P.O. Box 908  
Universidad de Puerto Rico  
Lajas, 00667 PUERTO RICO

**URUGUAY****de Alava, Anita**

Facultad de Ciencias Universidad de la  
República (FC UR)  
Tristán Narvaja 1674, C.C. 10773  
(11200) Montevideo URUGUAY  
Fax: (598 2) 409973

**Defeo, Omar**

INAPE / FC UR, Instituto Nacional de Pesca  
Constituyente 1497  
C.C. 1612, Montevideo URUGUAY  
Fax: (598 2) 413216;  
E-mail: odefeo@fcien.edu.uy

**Delgado, Estela**

Facultad de Ciencias Universidad de la  
República (FC UR)  
Tristán Narvaja 1674, C.C. 10773  
(11200) Montevideo URUGUAY  
Fax: (598 2) 409973

**Gimenez, José L.**

Facultad de Ciencias Universidad de la  
República (FC UR)  
Tristán Narvaja 1674, C.C. 10773  
(11200) Montevideo URUGUAY  
Fax: (598 2) 409973;  
E-mail: luisg@fcien.edu.uy

**Goberna Ramirez, Eduardo**

INAPE Instituto Nacional de Pesca  
Constituyente 1497  
C.C. 1612, Montevideo URUGUAY  
Fax: (598 2) 413216

**Gomez Erache, Mónica**

Facultad de Ciencias Universidad de la  
República (FC UR)  
Tristán Narvaja 1674, C.C. 10773  
(11200) Montevideo URUGUAY  
Fax: (598 2) 409973;  
E-mail: mge@fcien.edu.uy

**Riestra Albericci, Gustavo J.**

INAPE Instituto Nacional de Pesca  
Constituyente 1497, C.C. 1612  
Montevideo URUGUAY  
Fax: (598 2) 413216

**Verdi, Ana C.**

Facultad de Ciencias Universidad de la  
República (FC UR)  
Tristán Narvaja 1674, C.C. 10773  
(11200) Montevideo URUGUAY  
Fax: (598 2) 409973  
E-mail: postmaster@fcien.edu.uy

**VENEZUELA****Alio, Jose Javier**

FONAIAP-Sucre  
Aptdo. 236, Cumana 6101 VENEZUELA

**Carmona Suarez, Carlos Alberto**

Centro de Investigaciones Marinas  
Universidad Francisco Miranda  
Plaza Antillana  
La Vela de Coro Estado Falcon VENEZUELA  
Tel: 68.78639

**Diaz, Humberto J.**

Inst. Venezolano de Investigaciones Científicas  
Centro de Ecología  
Apart. 21827, Caracas 1020A VENEZUELA

**Gamba, Alejandra L.**

Dept. Biología de Organismos  
Universidad Simón Bolívar  
Apartado 89000, Caracas VENEZUELA

**Gines, Hno.**

Fundación La Salle de Ciencias Naturales  
Apart. 1930, Caracas 1010-A VENEZUELA  
Tel: 58.7828.711

**Pereira, Guido**

Universidad Central de Venezuela  
Instituto de Zoología Tropical  
Apdo. 47058, Caracas 10411-A VENEZUELA  
Tel: 58.2014.215.727, 02.605.2206  
Fax: 58.2605.2136, 02.605.2136  
E-mail: gpereira@dino.conicit.ve

**Rodriguez, Gilberto**

Instit. Venez. de Investigaciones Científicas  
Apartado 21827, Caracas VENEZUELA