



THE ECDYSIAST

Newsletter of the Crustacean Society

ECDYSIAST VOLUME 6, NUMBER 2

AUGUST, 1987

ELECTION TIME AGAIN

The posts of President-Elect, Society Program Officer, and Regional Governors of the Asian and South American Regions are up for election this year. The President-Elect oversees elections, i.e., receives and tabulates ballots and gives out the results of elections. He or she also solicits nominations for the various TCS offices and governorships. After serving for two years, the President-Elect succeeds the incumbent President. The Program Officer is responsible for arranging and coordinating symposia, workshops, conferences, and other similar TCS activities. Regional governors have a vote on the TCS Board of Governors and deal with Society membership and subscription matters in their area.

A ballot is included in this issue; just fill out and mail. Last year the number of ballots returned represented only a small percentage of the membership. Please cast a ballot--it's an opportunity for you to have some input into the Society.

TCS ANNUAL MEETINGS

New Orleans will be the site of the TCS annual meeting December 27-30. Adrian Wennner, TCS Program Officer has provided the following update on these meetings:

"The preliminary program for the New Orleans meetings of The Crustacean Society, the American Society of Zoologists, and other zoological organizations is now in hand. Items of particular interest to crustacean biologists are as follows:

12/27---Afternoon: posters on crustacean biology (followed by complimentary riverside Society social)

Evening: TCS Board Meeting; Crustacean Club Meeting

12/28---All day: Contributed papers on crustacean egg production

12/29---Symposium: CRUSTACEAN EGG PRODUCTION
(Participants: Clark, Talbot, Crisp, Onbe, Nelson, Rabalais,
Van Dover, Kuris, Ra'anan, Armstrong, Wenner, Botsford)

12/30---All day: Contributed papers on crustacean biology

TCS ANNUAL MEETINGS (CONT)

Other symposia of potential interest: Adaptive Sex Ratios and Sex Ratio Theories; Vicariance Biogeography; Aquatic Locomotion; Is the Organism Necessary?; Constraints of Bioenergetics on Animal Population Dynamics; Adaptive Coloration in Invertebrates.

See you there; mark your calendars now!" Adrian Wenner, TCS Program Officer

As noted in the last issue of the Ecdysiast, details of the meetings, such as program organization and hotel registration, are handled through ASZ. Write or call for information: Mary Adams-Wiley, American Society of Zoologists, Box 2739, California Lutheran University, Thousand Oaks, CA 91360; telephone: 805-492-3585.

Volunteers are always welcome to chair TCS contributed paper sessions; contact Mary Adams-Wiley at the above address if you are interested.

SYMPOSIUM ON CRUSTACEAN SEXUAL BIOLOGY APPROVED FOR 1988 ASZ MEETINGS

I have received word from the American Society of Zoologists office that the application for the symposium "Sex Attraction, Mating Behavior, and Insemination in the Crustacea" has been approved. The symposium will be cosponsored by The Crustacean Society and the ASZ Division of Invertebrate Zoology. I will be sending out information to symposium and contributed paper participants shortly with details about the symposium and related matters such as manuscript deadlines and volume publication. (Ray Bauer, Symposium Organizer)

UPDATE ON TCS LOGO CONTEST

Fred Schram, TCS President, wishes to thank those who have submitted their designs for the TCS logo contest. The TCS governing board is in the process of reviewing the entries.

JOB ANNOUNCEMENT

Research Technician, Crustacean Biology. A research technician will be hired this fall at the Center for Crustacean Research, University of Southwestern Louisiana, to work on a penaeid shrimp reproduction project. The technician's duties will include field collection, laboratory maintenance of live shrimp, and morphological studies (histology, SEM). Participation in short research cruises is required. Persons with a master's degree in biology with an emphasis in invertebrate zoology and/or marine biology are preferred, but candidates with a B.S. degree and appropriate experience will be considered. Those interested should send a resume to Ray Bauer, CCR/Biology, P.O. Box 42451, University of Southwestern Louisiana, Lafayette, LA 70504 (Telephone: 318-231-6435).

SEARCH FOR AMPHIPOD VOLUME

Rob Mattson is "desperately" searching for a copy of E.L. Bousfield's "Shallow Water Gammaridean Amphipoda of New England" (Cornell University Press, 1973, 312 pp) which is out of press. Rob is willing to pay "top dollar" for a hard bound edition in good condition. If you can help him out with this matter, contact him at the following address: Robert A. Mattson, Associate Ecologist, Mangrove Systems, Inc. P.O. Box 290197, Tampa FLA 33687 (Telephone: 813-989-3431).

OTHER MEETINGS

International Estuarine Research Conference. The Estuarine Research Federation and its regional affiliate societies will host the ninth biennial conference October 25-29 in New Orleans. Keynote theme sessions include (1) marshes: their importance to estuaries and regional comparisons; (2) responses of estuaries to atmospheric processes; (3) mechanisms of recruitment of estuarine organisms; (4) subtropical and tropical American estuaries: Latin America and the Gulf of Mexico; (5) Comparisons of key processes among major estuaries. In addition, sessions will be organized around a variety of other subjects; there should be a variety of papers on or including crustaceans. For more information, contact:

Estuarine Research Conference
P.O. Box 30
Chauvin, LA 70344

ICES SHELLFISH MEETINGS

The International Council for Exploration of the Sea (ICES) will sponsor meetings of its Shellfish Committee October 1-9, in Santander, Spain. Gerard Conan, Chairman of the ICES Shellfish Committee, has given the special topics for the meetings as (1) Sampling populations of invertebrate species with reference to spatial distributions and spatial variability of biological parameters and (2) Growth and mortality with reference to density dependence, environmental effects, and diseases. For more information, contact Dr. Gerard Y. Conan, Chairman ICES Shellfish Committee, Marine Biology Research Centre, University of Moncton, Moncton, N.B., E1A 3E9, Canada

DOCTORAL FELLOWSHIPS AT USL

The Department of Biology, University of Southwestern Louisiana will have three doctoral fellowships available for superior students in the fall of 1988. The stipend is \$12-15,000 per year, \$2000 per year is available for research (in addition to departmental and grant funds), \$500 per year is available for travel to meetings, and \$500 is allocated for travel expenses for an "outside" member of the dissertation committee. Those interested in working with crustaceans who might wish to pursue these fellowships should contact Dr. Darryl Felder or Dr. Ray Bauer, Department of Biology, University of Southwestern Louisiana, Lafayette, LA 705034-2451.

NEW REGULATIONS GOVERNING SCIENTIFIC RESEARCH ON AUSTRALIAN CRUSTACEANS

Dr. Gary C.B. Poore, Curator of Crustacea, Museum of Victoria, Australia, reports that, during a recent visit to the U.S., he found considerable misunderstanding about the new legislation concerning export of specimens from Australia. Dr. Poore and Helen M. Lew Ton have compiled the following information for Ecdysiast readers:

Regulations Covering Study of Australian Crustaceans. The rich endemic crustacean fauna of Australia is receiving increasing attention from taxonomists locally and overseas. Taxonomic study by specialists in institutions outside Australia is encouraged but workers should be aware of the conditions which have been set by the Australian government. These conditions, contained in Australian Acts and Regulations, seem not to have been widely promulgated outside the country. This note brings them to the notice of crustacean workers worldwide. The Regulations may seem restrictive but we believe that this is not the intention and would welcome enquiries from carcinologists wishing to study the extensive collections which already exist in Australian museums.

Wildlife Export from Australia. Three sets of regulations cover the export of Australian wildlife. Certain endangered and protected species are covered under the Customs Acts. The freshwater crayfish, Astacopsis gouldii, is included under these regulations.

Commercial species of Crustacea are covered by regulations administered by the Australian Department of Primary Industry: (Penaeidae, 13 species; Palinuridae, 10 species; Scyllaridae, 3 species; Portunidae, 2 species; Raninidae, 1 species; Parastacidae, 4 species; Palaemonidae, 1 species; and all Alpheidae).

New conditions covering wildlife export from Australia are in the Wildlife Protection (Regulation of Exports and Imports) Act 1982 and the associated Regulations, 1984. This act is administered by the Australian National Parks and Wildlife Service (ANPWS). An information sheet giving conditions for export for scientific research can be obtained from:

Director,
Australian National Parks and Wildlife Service
G.P.O Box 636
Canberra, ACT 2601, Australia

and are summarised here. The Regulations were effective from 1 May, 1984.

Permission to Export Australian Specimens. Export of any material is possible but only by the Authority of a registered Australian institution or by permits issued on the basis of recognised scientific research. Concessions have been extended to certain scientific institutions to facilitate the exchange of specimens for scientific research without obtaining an individual export permit for each item.

AUSTRALIAN REGULATIONS (CONT)

The Act states that an Authority may be issued to allow routine export of specimens of dead fauna (either as a noncommercial loan, exchange, or donation) between "Registered Scientific Institutions". Under the Authority, separate applications are not required for each export transaction providing the exporter attaches an ANPWS label to each package containing specimens. (Anyone receiving a parcel from Australia in the last 3 years will have noticed these labels--their size makes them impossible to overlook!)

Scientific institutions must fulfill a number of conditions before being added to the Register but all Australian museums and many organizations which hold research collections are included on the Register. Many overseas organizations are also included and ANPWS will be able to tell you if your institution is on the Register. The Authority to export covers only traffic between Registered Scientific Institutions. Loans to workers who are not on the staff, or affiliated to, a Registered Scientific Institution require an individual permit to be issued. This permit is issued only after the institution, especially the department where the research is to be conducted, has applied to ANPWS for scientific status under the Act.

Lodgement of Holotypes of Australian Species. Included in the Regulations is a section which sets out the responsibilities of Australian scientific institutions concerning the deposition of primary types of Australian species.

Section 10 of the Regulations states that Australian institutions are required to take steps to secure the return of any material, exported under Authority after 1 May, 1984, which is subsequently designated holotype of a native Australian animal. This means that holotypes (and lectotypes and neotypes) must be lodged in an Australian institution but does not exclude the retention of paratypes overseas.

The conditions apply when material is exported as a loan or a donation. As well as ensuring that primary types derived from loans are returned this means that holotypes selected from material donated to non-Australian institutions after May 1984 must be returned to Australia. Similarly, the Regulations apply to material collected by visiting overseas workers and taken home.

Primary types lodged outside Australia before this date are not subject to the Regulations and Australian institutions are not required to recover them.

Australia in the sense of the Act includes mainland Australia, Tasmania, Lord Howe Island, Norfolk, Island, Cocos (Keeling) Islands, Christmas Island, Ashmore Island, Cartier Island, islands and reefs of the Australia Coral Sea Territory, Subantartic islands (Macquarie, Heard, Macdonald), and the coastal waters and continental shelf adjacent to these land areas.

AUSTRALIAN REGULATIONS (CONT)

Collections Made by Visiting Overseas Workers. This act covers the export of collections made in Australia by visiting overseas workers. Anyone proposing to collect and export Australian specimens would be well advised to contact ANPWS for full details of permit requirements. In addition, collection of specimens in National Parks, Marine National Parks, and Marine Reserves is regulated--usually by the state concerned. Sections of the Great Barrier Reef are under the control of the Great Barrier Reef Marine Park Authority, Townsville, Queensland.

Submitted to the Ecdysiast by Helen M. Lew Ton and Gary C.B. Poore, Department of Crustacea, Museum of Victoria, 328 Swanston St., Melbourne, Victoria 3000, Australia.

NEW PUBLICATIONS

Shallow Tethys 2. K.G. McKenzie (ed). 1987, 562 pp, illus. This is the volume resulting from the 1986 symposium of the same name. It contains a dozen or so crustacean papers (mainly on Ostracoda). Other contributions embody the latest data on continental configurations, according to mobilist and earth expansionist ideas as well as in terms of plate tectonics--ground rules for the new biogeography. The volume can be ordered from AA Balkema Publishers, Post Box 1675, NL-3000 BR Rotterdam, The Netherlands. Price is approximately \$40.

Official Lists and Indexes of Names and Works in Zoology. The 1987 edition of the "Official Lists and Indexes..." has been published by the International Trust for Zoological Nomenclature. This publication records for the first time in a single volume all the animal names and titles of works on which the International Commission has ruled since it was set up in 1895. The volume comprises 366 pages and includes 9,900 entries. References are arranged alphabetically in four sections: family group names, generic names, specific names, and titles of works.

This work includes over 1100 names of Crustacea, most of them decapods, including those of 104 family-groups, 529 genera, and 546 species.

In North America, copies may be ordered from the American Association for Zoological Nomenclature (AAZN, c/o NHB Stop 163, Smithsonian Institution, Washington, DC 20506). The cost is \$110.00 (\$100.00 to AAZN members). (submitted by Ray Manning).

TREASURY NOTES

Denton Belk, TCS Treasurer, gives the following update on TCS finances: "At the end of June this year, your Society's membership was 38 Sustaining, 670 Regular, and 29 Associate members. Institutional subscriptions were 251.

Financial Statement, June 30, 1987: cash in excess of 1987 budget, \$ 766.35; cash allocated to 1987 budget, \$24,912.10; cash allocated to future years, \$600.00; Special Needs Membership Fund, \$595.00; Endowment Fund, \$2,310.00; Total, \$29,183.45."

CRUSTACEAN SOCIETY ELECTIONS

Listed below are the candidates (incumbents) for the Crustacean Society posts which are up for election this year. Check the box adjacent to the incumbent's name, or check the write-in box and in write another candidate of your choice. Please detach the ballot from the newsletter, fold and staple as directed on the reverse side, affix a stamp, and drop it in the mail.

PRESIDENT-ELECT

- Dr. Paul A. Haefner, Dept. Biology, Rochester Institute of Technology, Rochester, NY
- Write-In Candidate.....
-

PROGRAM OFFICER

- Dr. George D. Wilson, Marine Biology, Scripps Institution of Oceanography, La Jolla, CA
- Write-In Candidate.....
-

SOUTH AMERICAN REGIONAL GOVERNOR

- Dr. Gilberto Rodriguez, Instituto Venezolano de Investigaciones Cientificas, Caracas, Venezuela
- Write-In Candidate.....
-

ASIAN REGIONAL GOVERNOR

- Dr. Tatsunori Ito, Seto Marine Biology Laboratory Kyoto University, Shirahama, Wakayama, Japan
- Write-In Candidate.....
-

staple

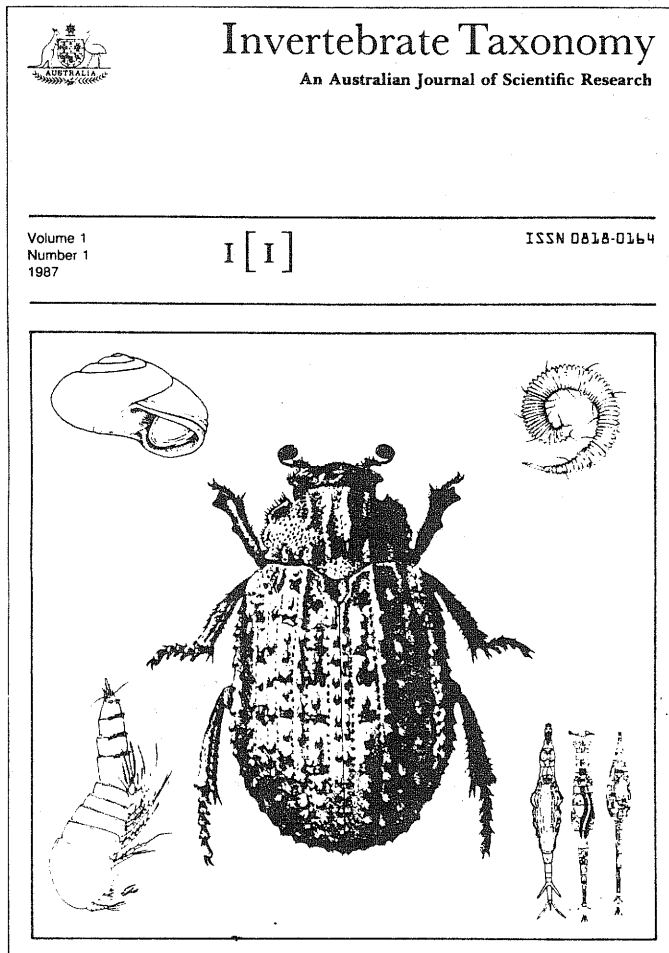
Fold 2

STAMP

Dr. Darryl L. Felder
Department of Biology
P.O. Box 42451
University of Southwestern Louisiana
Lafayette, LA 70504

Fold 1

New Journal



- A journal of international standard for publication of original work on taxonomy and systematics of invertebrates
- Papers will include:
 - Comprehensive treatments of groups of animals
 - General papers on methodology pertinent to invertebrate systematics
- This journal in part replaces the highly respected Supplementary Series of the *Australian Journal of Zoology* but offers more

Some Titles from Volume 1

- The Australian species of the Carabid genus *Perileptus* . . . *Martin Baehr*
- The Neuroptera (Insecta) of Norfolk Island *T. R. New*
- Tricomininae (Nematoda : Desmoscolecida) from Laing Island, Papua New Guinea . . . *Wilfreda Decraemer*
- The non-marine harpacticoid copepods of Australia . . . *R. Hamond*

Editorial Advisory Committee

- Chairman* T. R. New, LaTrobe University
- Members* L. R. G. Cannon, Queensland Museum
 M. B. Malipatil, Northern Territory Museum of Arts and Sciences
 E. S. Nielsen, Division of Entomology, CSIRO
 G. C. Poore, Museum of Victoria

Send manuscripts to 314 Albert Street, East Melbourne, Victoria 3002, Australia. The notice to authors is published in the first issue of each volume; copies are available on request.

Subscriptions for 1987

- Institutional:* Australia and New Zealand, \$A180 (surface), \$A210 (air).
 Other countries, \$US180 (surface), \$US210 (air).
- Personal:* \$US75 (includes air delivery), payable by personal cheque or credit card.
 Special personal rates are available through certain scientific societies in Australia and New Zealand; details are available on request.
- Microfiche:* \$A60.
- Individual issues:* \$A20.

I wish to subscribe to *Invertebrate Taxonomy*.

- I enclose cheque/money order.
 Please bill my credit card Mastercard Visa

Card No. Expiry date

Name

Address

..... Post Code

Signature Date

Send your order, with prepayment, to the 'Collector of Moneys, CSIRO', Publications Sales Office, 314 Albert Street, East Melbourne, Victoria 3002, Australia.

- The leading journal for invertebrate taxonomy and systematics in the Australasian Region
- Following in the best traditions of the *Australian Journal of Zoology, Supplementary Series*
- International distribution
- Published 8 times per year
- No page charges
- Individual issues available
- Credit-card facility for personal subscriptions



Dendromunna sp. (Isopoda)

G. Wilson



THE ECDYSIAST

c/o Ray Bauer
Center for Crustacean Research
USL Box 42451
University of Southwestern Louisiana
Lafayette, Louisiana, 70504

Non-Profit Organization
U.S. POSTAGE
PAID
Lafayette, LA 70504
PERMIT 218