



# THE ECDYSIAST

Membership  
List

## Newsletter of the Crustacean Society

NUMBER 1 Edited and Produced in the Business Office MARCH, 1982

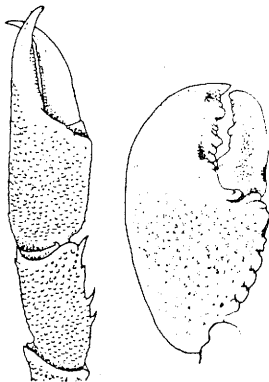
### GREETINGS

This is the first edition of what we anticipate will become a regular service of the Society to its members. We plan two newsletters a year, the first to provide a current list of members, to be published in January or as early as possible each year, the second containing meeting information, to be sent to members during the summer in time to submit abstracts to the ASZ for papers to be presented at the annual meeting each December.

We welcome information from members for this newsletter. Deadlines for submission are 31 December for the first issue each year, 30 June for the meeting issue. Please make note of these deadlines.

The membership list given below is complete as of 1 March. We had hoped to be able to include research interests as well as addresses of each member, but we were unable to do so this time. Next year we should be able to add this information.

We realize that the list has some errors. Please send any corrections to the Business Office.

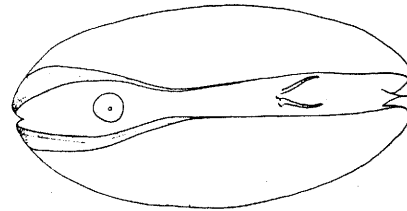


### BUSINESS OFFICE

The Business Office of the Society is at the following address:

Business Office  
The Crustacean Society  
IZ-NHB-W323  
Smithsonian Institution  
Washington, DC 20560 U.S.A.

Please address all correspondence with the Society to this address.



### SYMPOSIUM COMMITTEE

A Symposium Committee, chaired by Robert H. Gore (Smithsonian Institution), has been established to plan future symposia sponsored by the Society. At Louisville, this year, the Society will sponsor symposia on crayfish distribution patterns (contact James F. Payne, Memphis State University for information) and factors affecting crustacean growth (contact Adrian M. Wenner, University of California, Santa Barbara, for information), and a symposium on crustacean zoogeography is being planned for the 1983 meeting in Philadelphia.

Members with suggestions for future symposia should contact Dr. Gore.

**DISCOUNT ON "SYNOPSIS AND  
CLASSIFICATION" OF LIVING  
ORGANISMS"**

**25% DISCOUNT ON "BIOLOGY OF  
CRUSTACEA"**

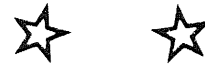
This year Academic Press will begin publishing the "Biology of Crustacea," a set of 10 volumes encompassing significant findings, including methods, in three general areas of crustacean research: (1) systematics, morphology, evolution, and the fossil record; (2) physiology, ecology, and behavior; and (3) applied biology, including fisheries, mariculture, and pathology. Volume 1 (Systematics, the Fossil Record, and Biogeography) is scheduled to be published in May, volumes 2 (Morphology, Embryology, and Genetics) and 3 (Neurobiology: Structure and Function) will be published in June, and volume 4 (Neural Integration and Behavior) will be published in March. The remaining volumes are in preparation. These volumes will carry a list price of \$40 or more per volume.

The Crustacean Society is able to offer members or subscribers to the Journal a discount of 25% on individual volumes ordered from the Society's business office, a substantial savings to members. We will accept prepaid orders on individual volumes as they are published. We cannot accept advance orders for volumes in preparation.

As soon as the list price for each volume is established, we will print up order forms for member's use. Note that the discount will apply only to prepaid orders sent directly to the Society's Business Office.

Members interested in receiving order forms when they become available should write to the Business Office.

The Society also is able to offer members a discount, possibly as high as 25%, on the two volume set, "Synopsis and Classification of Living Organisms," recently published by McGraw-Hill. Inasmuch as this publication will cost about \$150 per set, members will be able to purchase these volumes at a substantial savings. The discount will apply to prepaid orders sent to the Business Office. For order forms, please write to the Business Office.



**REPRINTS OF J. L. BARNARD'S  
"THE FAMILIES AND GENERA OF  
MARINE GAMMARIDEAN AMPHIPODA"**

This publication by J. L. Barnard, originally published in the Bulletin of the U. S. National Museum in 1969 and long out of print, is now available in a reprint edition at a cost of \$15.00. Prepaid orders for this publication should be sent to:

Barnard Reprint  
IZ-NHB-W323  
Smithsonian Institution  
Washington, DC 20560 U.S.A.

**BACK ISSUES**

Members joining the Society in 1982 should be aware that back issues of volume 1 of the Journal are available from the Business Office. Individual issues may be purchased for \$6.25 (\$7.50 outside the U.S.), the entire volume for \$25.00 (\$30.00 outside the U.S.).

Members joining in 1982 may wish to complete their set of the journal while back issues are still available.

## BEST STUDENT PAPER AWARD

The Society has initiated a Best Student Paper Award for papers presented at its annual meeting. To be eligible, a student must be pursuing a degree or must have received the degree upon which the research is based less than two years prior to the presentation of the paper. The paper must be presented in person, and, if co-authored, documentation that the research is primarily the original work of the student must be furnished.

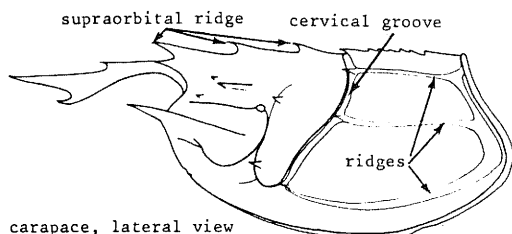
Students whose papers are eligible for this award should complete the Best Student Paper Competition form which is available from ASZ, when abstracts are submitted to the ASZ in late summer.

Students may not be eligible for more than one award at any annual meeting.

The award shall consist of a certificate and a free one-year subscription to the Journal of Crustacean Biology.

The student award committee is chaired by Adrian M. Wenner, University of California, Santa Barbara.

This award was initiated at the Dallas meeting in 1981. The first winner of the award is Sandra L. Gilchrist, Florida State University.



carapace, lateral view

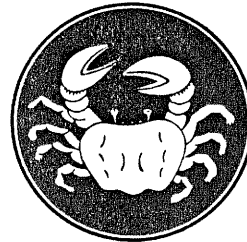
## BEST PAPER IN JOURNAL AWARD

At its meeting last October, the Board of Governors of the Society voted to institute an award for the Best Paper published in the journal each year. A committee chaired by Denton Belk (Our Lady of the Lake University of San Antonio) will select a paper from among those nominated by the members. The award will be presented for the Best Paper of Volume 1 of the Journal (1981) at the Louisville meeting in December.

Members who wish to nominate a paper published in Volume 1 of the Journal for this award should forward their nomination, along with a justification, to Dr. Belk at the following address:

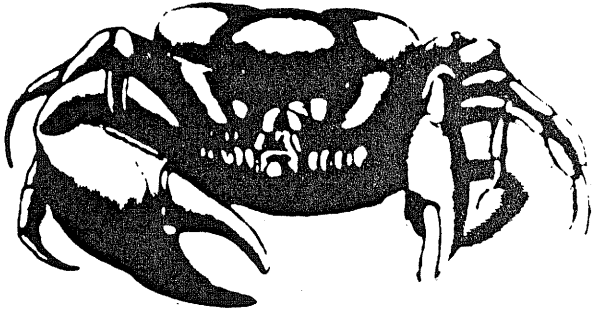
Best Paper Award  
Dr. Denton Belk  
840 E. Mulberry  
San Antonio, TX 78222

The deadline for submitting nominations is 30 September of each year.



## ATTENDANCE AT DALLAS SESSIONS

Members might be interested to learn of the attendance levels at our sessions during the Dallas meetings. There were four half-day contributed paper sessions on crustaceans early in the meeting, with the following attendance: Session 34 (23-42 attendees), 48 (150 attendees), 64 (75 attendees), and 77 (50 attendees). The symposium, Phylogeny within the Crustacea, held on the last day, attracted 150 in the morning, 40-60 in the afternoon. The luncheon was sold out.



## AIRSPPEED DELIVERY OF JOURNAL OVERSEAS

Through 1981 the Journal was mailed to members outside of North America by surface mail, which can mean a delay of two months or more in delivery time. We have just learned that if 100 or more members/subscribers from Europe are willing to pay extra, we can arrange for delivery of the Journal by air to a distribution point in Europe from which issues will be mailed first class to European addresses. This service can be provided for an additional \$5.00 per year, i.e. the Journal would cost \$25 plus \$10 for mailing costs. We anticipate that a similar service could be made available for members elsewhere.

We would appreciate hearing from members interested in this service later this year or in 1983. If enough members participate we should be able to provide this service.

### MEMBERS IN ARREARS

A significant number of members have not yet paid their 1982 dues, and at least 75 members apparently have not yet paid their 1981 dues. Late notices will be mailed to members in arrears in April. Because of the cost of rebilling and mailing second notices, a service charge of \$3.00 will be added to the second notices on dues. Members in arrears will not receive volume 2, number 1 of the Journal until their 1982 dues are paid.

### T-SHIRTS

T-Shirts, with the design shown below printed in the area of the pocket on the upper left of the shirt, are available from the Business Office for \$7.00. Please specify size (Small, Medium, Large, X-Large) and color (light blue or tan) when ordering the shirts.

### MEMBERS OUTSIDE OF NORTH AMERICA, PLEASE NOTE:

The cost of mailing information overseas by air mail is prohibitively expensive. In order to make substantial savings on mailing costs, we are asking members overseas who plan to attend the annual meeting or might be interested in attending the annual meeting to write to the Business Office to ask for meeting information, which we can send via air mail on an individual basis. Otherwise, the second newsletter will be mailed overseas by surface mail.



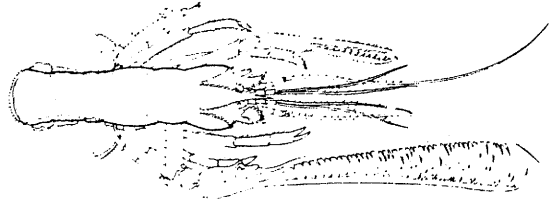
## ADDRESS CHANGES

Approximately 10% of the members of The Crustacean Society change their mailing addresses each quarter. Such changes are surprisingly costly when taken in aggregate - involving first class postage for all issues returned; remailing the journal at 4th class rather than bulk rates; updating of computer files maintained by the Business Office; typing of new Cheshire cards for Journal mailings; communications between the Business Office, the Editor, and the Printer; filing; and assorted other tasks. These extra costs deplete funds that could otherwise be used for printing.

We ask that members consider carefully where they would have the Journal sent, and, as much as possible, stick with the decision. Occasionally it is obvious that someone will start out with the Journal sent to an office address, but use a home address on the dues envelope. In such cases we have no choice but to change the address, even though we may be fairly sure the change is unnecessary.

Graduate students in particular should consider this matter carefully. While students benefit substantially from lower dues, they make up the largest group of those who change addresses frequently. This is understandable, given the sometimes nomadic habits of this subpopulation. However, we would like to encourage students to consider the costs of frequent address changes to the Society, and, if feasible, select some relatively permanent address for the Journal during their nomadic phase. A few days lost while someone at home forwards the Journal to you is faster and cheaper, by far, than having the Journal returned to us for remailing.

Please do not fill out the "Change of Address" section on the dues notice unless you want your address changed. Many members do fill out that section routinely, causing unnecessary extra work to check the addresses.



## MAILING LABELS

Mailing labels for the Journal are generated automatically by Allen Press from address cards (Cheshire Cards) maintained on file at the Press. Some members have expressed dismay at the form of their addresses on the Journal mailing labels. The format of the Cheshire Cards is such that addresses must be compressed into 4 lines, regardless of the length submitted by the members. The mailing address must fit into a space measuring 2 cm high, 9 cm wide.

If you are unhappy with the address that now appears on your mailing label, please send us a corrected address that will fit into a block measuring 2x9 cm and not exceeding 4 lines.



## JOURNAL FLYERS AVAILABLE

The Business Office has a stock of the flyers used to advertise the Journal. Members interested in obtaining a supply of these fliers to mail with their reprints should request these from the Business Office.



## GIFT SUBSCRIPTIONS/MEMBERSHIPS

We now carry about a dozen gift subscriptions or memberships entered by members for colleagues who for one reason or another do not have access to hard currencies. This is virtually the only way that colleagues behind the iron curtain can receive the Journal.

Please consider entering a membership for a colleague who may not otherwise be able to receive the Journal.



## SUBSCRIPTIONS

We are including below a list of the institutional subscribers to the Journal. Please look over the list to see whether your institution has entered a subscription. If not, please ask that a subscription be ordered. If every member insured that his or her institution subscribed to the Journal we would be very near the break-even point on operation of the Journal.

## NOTICE FROM THE EDITOR

As you know, the Journal of Crustacean Biology is devoted to the publication of papers on any aspect of the biology of Crustacea. Thus far a reasonable balance of fields represented in each number of the Journal has been achieved. Volume 2, number 1, will, for example, contain papers in the following areas:

physiology	1
life histories and development	2
taxonomy	5
structure	4
behavior	1
functional morphology	1
distribution	1

However, the balance of subjects for volume 2, number 2, is not as favorable. On hand, edited and ready for the printer, are 16 manuscripts distributed in the following areas:

taxonomy	11
development	1
ecology	1
field methods	1
physiology	1
regeneration	1

If associate editors, previous authors, reviewers, and all others interested would actively encourage potential authors in fields poorly or not at all represented in the Journal to submit manuscripts, we would improve the balance of topics, enhance the variety, and make the Journal attractive to a wide readership.

Arthur G. Humes

[letter dated 22 February 1982 and mailed to all associate editors].

The next two pages contain information on the Louisville meeting supplied by the ASZ.

1982 MEETING OF THE AMERICAN SOCIETY OF ZOOLOGISTS WITH THE

CRUSTACEAN SOCIETY, AMERICAN MICROSCOPICAL SOCIETY,  
ANIMAL BEHAVIOR SOCIETY AND SOCIETY OF SYSTEMATIC ZOOLOGY

DECEMBER 27 - 30 GALT HOUSE, LOUISVILLE, KENTUCKY

SYMPOSIA SPONSORED BY THE DIVISION OF INVERTEBRATE ZOOLOGY, ASZ

BIOMECHANICS (organized by Mark Denny for the Division of Invertebrate Zoology of ASZ). Tentative list of speakers and topics includes:

- WAINWRIGHT, S.A., Overview of biomaterials research, directions for the future.  
CURREY, J.D., Hard materials and skeletons.  
FUNG, Y.C., Fibrous soft materials.  
DENNY, M.W., Mucins.  
VOGEL, S.A., Overview of fluid mechanics research and directions for the future.  
JUMARS, P.A., Flow forces and community structure.  
KOEHL, M.A.R., Active filter feeding at low Reynolds numbers.  
LABARBERA, M., Passive filter feeding.  
ALEXANDER, R.McN., Terrestrial locomotion.  
ELLINGTON, C.P., Flight.  
WEBB, P.W., Aquatic locomotion.  
DANIEL, T., Accelerational effects in swimming.

CRAYFISH DISTRIBUTION PATTERNS, A SYMPOSIUM IN HONOR OF HORTON H. HOBBS (organized by James F. Payne for the Division of Invertebrate Zoology of ASZ and the Crustacean Society). Tentative speakers and topics are:

- PAYNE, J.F., Introduction and symposium dedication.  
BOUCHARD, R., Zoogeography and evolution of holarctic crayfishes.  
HOBBS, H.H., Jr., On the distribution of the genus Procambarus.  
FITZPATRICK, J.F., Jr., New data on the Pliocene Tennessee River and their bearing on crawfish distribution.  
MOMOT, W., Crayfish production (yields): A reflection of community energetics?  
DICKSON, G., Physiological adaptations of crayfish to subterranean habitats.  
FRANZ, R., Demographic patterns in North Florida cave crayfishes.  
HUNER, J., Thermal tolerance and oxygen requirements of Procambarus clarkii and Procambarus acutus.  
COVICH, A., Effects of gastropod prey distributions on crayfish foraging areas.  
CAPELLI, G., Crayfish distribution patterns in Wisconsin: Recent changes and controlling mechanisms.  
BUTLER, M., and R. STEIN, Competition among crayfish: Mechanisms and distribution effects.  
FLYNN, M. and H.H. HOBBS, III, Lotic crayfishes of Ohio Brush Creek, Ohio: A case study of competitive exclusion?  
LORMAN, J., The distribution of Orconectes rusticus in relation to substrate type.  
HART, W., Aspects of the distribution of entocytherid ostracods and their crayfish hosts.  
HOLT, P., Crayfishes and their branchiobdellid symbionts: A non-correlation?



FACTORS INFLUENCING CRUSTACEAN GROWTH (organized by Adrian M. Wenner for the Divisions of Ecology and Invertebrate Zoology of ASZ, and the Crustacean Society). Tentatively, the following speakers and topics are scheduled:

- GORE, R.H., Growth and metamorphosis of crustacean larvae.
- MC CONAUGHA, J.R., The effects of nutrition on larval growth.
- SKINNER, D.M., Control of the crustacean molt cycle.
- KURIS, A., The relative duration of molt cycle stages.
- CONAN, G., Periodicity and phasing up of molt processes (cycles).
- WENNER, A.M., Seasonal and habitat variation in size at onset of egg production.
- MORGAN, M.D., Growth rates of mysids in different habitats.
- FINGERMAN, S.W., The effects of pollutants on crustacean growth.
- BOTSFORD, L.W., Methods of estimating growth rates of crustaceans.
- RANAAN, Z., Growth studies in aquaculture.

OTHER SYMPOSIA SCHEDULED

- (1) Cellular mechanisms of ion regulation in arthropods, (2) Molecular aspects of early development, (3) Gastrulation, (4) Alternative reproductive tactics, (5) Phylogenetic relationships of the lizards, (6) The evolution of endocrine systems in lower vertebrates, (7) Evolution of the vertebrate lymphocyte, (8) Evolution of neural systems in the vertebrates: Functional-anatomical approaches, (9) The place of T. H. Morgan in American biology.

\* \* \* \* \*

CONTRIBUTED PAPERS -- ORAL AND POSTER PRESENTATIONS

Forms and instructions available mid-April. Deadline for submission is August 27.

Papers on the DIZ-sponsored symposia topics are especially encouraged. Abstracts will be published in the American Zoologist 22(4).

Graduate students on the program are eligible to compete for Best Paper Awards and complimentary housing or travel grants.

\* \* \* \* \*

Meeting plans include several socials, special programs, commercial exhibits and a Job Placement Service. Hotel rates are \$29 for single rooms, \$36 for double/twin rooms and \$43 for triple rooms at the Galt House and Hyatt Regency. This meeting is hosted by The University of Louisville with X. J. Musacchia heading the Local Arrangements Committee.

All ASZ members will receive a meeting brochure and forms for posters and contributed papers with the April ASZ Newsletter.



1-90-15477

## Individual Members as of March 1, 1982

L. G. ABELE  
DEPT. OF BIOLOGICAL SCIENCES  
FLORIDA STATE UNIVERSITY  
TALLAHASSEE, FL 32306

904-644-3700  
FERNANDO G. ACEVES  
P.O. BOX 3559  
SAN YSIDRO, CA 92073

DANIEL L. ADKISON  
DEPARTMENT OF BIOLOGY  
TULANE UNIVERSITY  
NEW ORLEANS, LA 70118

MOHAMMAD H. AL-ATTAR  
P.O. BOX 1521  
SALMIYAH  
KUWAIT

ROBERTO E. ALANGO  
P.O. BOX 11249, ZONE 6  
PANAMA  
REPUBLIC OF PANAMA

HEMMING ALBRECHT  
FACHB. BIOL. DER PHILIPPS-UNIV.  
LAHNBERGE, POSTFACH 1929  
D-3550 HARBURG (LAHN)  
WEST GERMANY

S. J. ALEXANDER  
DEPT. OF ZOOL., UNIV. OF NATAL  
P.O. BOX 375  
PIETERMARITZBURG  
3200 SOUTH AFRICA

D. L. ALFORD  
DEPT. OF ZOOLOGY  
UNIV. OF HAWAII  
HONOLULU, HI 96822

M. A. ALIKHAN  
DEPT. OF BIOLOGY  
LAURENTIAN UNIVERSITY  
SUDBURY, ONTARIO P3E 2C6  
CANADA

JOSE J. ALIO  
DEPT. OF BIOLOGICAL SCIENCES  
UCSB  
SANTA BARBARA, CA 93106

DENNIS M. ALLEN  
BARUCH MARINE LABORATORY  
UNIV. OF SOUTH CAROLINA  
P.O. BOX 1630  
GEORGETOWN, SC 29440

NOEL C. ALON  
MARINE SCIENCE PROGRAM  
UNIVERSITY OF SOUTH CAROLINA  
COLUMBIA, SC 29208

JULIE W. AMBLER  
DEPT. OF OCEANOGRAPHY  
TEXAS A & M UNIVERSITY  
COLLEGE STATION, TX 77843

MARGARET O. AMSLER  
DEPT. MAR. BIO-MEDICAL RES.  
UNIV. N.C. AT WILMINGTON  
7205 WRIGHTSVILLE AVE.  
WILMINGTON, NC 28401

RICARDO ANADON  
DEPT. ZOOLOGIA Y ECOLOGIA  
FACULTAD DE CIENCIAS (BIOL.)  
UNIV. DE OVIEDO, OVIEDO  
SPAIN

D. T. ANDERSON  
ZOOLOGY BUILDING A08  
SCHOOL OF BIOLOGICAL SCIENCES  
UNIV. OF SYDNEY, SYDNEY N.S.W.  
AUSTRALIA

G. ANDERSON  
BOX 5018 SOUTHERN STATION  
HATTIESBURG, MS 39401

PAUL J. ANDERSON  
NOAA-NMFS  
P.O. BOX 1638  
KODIAK, AK 99615

BRYAN L. ANDRYSZAK  
4009 SHAWNEE CIRCLE  
BRYAN, TX 77801

MARTIN V. ANGEL  
INSTITUTE OCEANOGRAPHIC SCI.  
WORMLEY, GODALMING  
SURREY GU8 5UB  
ENGLAND, UK

PAUL J. ANNINOS  
DEPT. OF OCEANOGRAPHY  
OLD DOMINION UNIVERSITY  
NORFOLK, VA 23508

PATRICIO M. ARAHA  
2 1/2 NORTE 1373  
VINA DEL MAR  
CHILE

G. H. ARNOTT  
MARINE SCI. LABS.  
MINISTRY OF CONSERVATION  
P.O. BOX 114, QUEENSCLIFF, VIC.  
3225 AUSTRALIA

MICHAEL R. ARSENAULT  
DEPT. OF BIOLOGY, ROOM 106  
TRENT UNIVERSITY  
PETERBOROUGH, ONTARIO  
CANADA K9J 7H8

K. PEETHAMBARAN ASARI  
DEPT. OF ZOOL., GOVERNMENT COLL  
PORT BLAIR 744 104  
ANDAMANS, NICOBAR ISLAND  
INDIA

JELLE ATEMA  
RIMP-HNL  
WOODS HOLE, MA 02543

TENSHI AYUKAI  
LAB. OF OCEANOGRAPHY  
FACULTY OF AGRICULTURE  
TOHOKU UNIV., SENDAI 980  
JAPAN

KEIJI BABA  
FACULTY OF EDUCATION  
KUHAROTO UNIVERSITY  
KUHAROTO  
860 JAPAN

PEDRO BAEZ-RETAMALES  
INST. PROFESIONAL DE INQUIQUE  
DEPTO. CIENCIAS Y TECNOLOGIA  
CASILLA 121, INQUIQUE  
CHILE

RICHARD BAILEY  
PECHE ET OCEANS  
G. MARITIME CHAMP, C.P. 15 500  
QUEBEC, QUE. G1K 7Y7  
CANADA

ROLF P.H. BAK  
CARIBBEAN MAR. BIOL. INSTITUTE  
P.O. BOX 2090  
CURACAO  
NETHERLANDS ANTILLES

A.H. and D.M. BANNER  
HAWAII INST. OF MARINE BIOLOGY  
P.O. BOX 1346, COCONUT ISLAND  
KANEHOE, HI 96744

J. LAURENS BARNARD  
1Z NHB W323  
SMITHSONIAN INSTITUTION  
WASHINGTON, D.C. 20560

ROBERT D. BARNES  
DEPT. OF BIOLOGY  
GETTYSBURG COLLEGE  
GETTYSBURG, PA 17325

FRANKLIN H. BARNWELL  
DEPT. ECOL. & BEHAVIORAL BIOL.  
UNIV. OF MINNESOTA  
318 CHURCH ST., S.E.  
MINNEAPOLIS, MN 55455

DOUGLAS J. BARR  
3534 N. SOMERSET ST.  
ARLINGTON, VA 22213

G. BAUDO  
7 ETON ROAD  
LONDON NW3 4SS  
ENGLAND, U.K.

RAYMOND T. BAUER  
DEPT. OF BIOLOGY  
UNIVERSITY OF PUERTO RICO  
RIO PIEDRAS  
PUERTO RICO 00931

DAVID L. BECHLER  
DEPT. OF BIOL., P.O. BOX 10037  
LAMAR UNIVERSITY  
BEAUMONT, TX 77707

ANTHONY J. BECKER, JR.  
DEPT. OF BIOLOGY  
PENNSYLVANIA STATE UNIVERSITY  
NEW KENSINGTON, PA 15068

DENTON BELK  
840 E. MULBERRY  
SAN ANTONIO, TX 78222

DENISE R. BELLAN-SANTINI  
STATION MARINE D'ENDOUME  
RUE BATTERIE-DES-LIONS  
13007 MARSEILLE  
FRANCE

SUZANNE V. BENECH  
PCOMAR, INC.  
158 SANTA FELICIA DRIVE  
GOLETA, CA 93017

MIRIAM F. BENNETT  
DEPT. OF BIOLOGY  
COLBY COLLEGE  
WATERVILLE, ME 04901

JOHN A. H. DENZIE  
DEPT. OF POPULATION BIOLOGY  
RES. SCH. BIO. SCI.  
AUSTRALIAN NATIONAL UNIVERSITY  
CANBERRA, A.C.T., AUSTRALIA

PENELOPE B. BERENTS  
ZOOLOGY DEPARTMENT  
AUSTRALIAN NATIONAL UNIV.  
P.O. BOX 4, CANBERRA, A.C.T.  
AUSTRALIA

AGGA-BETH VITALE BERG  
12804 E. 57TH STREET  
KANSAS CITY, MO 64133

MATZ BERGGREN  
KRISTINEBERGS MAR. BIOL. STA.  
S-45034 FISKEDACKSKIL  
SWEDEN

ROSS E. BERGLUND  
11689 N.E. SUNSET LOOP  
RAINBIDGE ISLAND, WA 98110

MICHAEL BERRILL  
BIOLOGY DEPT.  
TRENT UNIVERSITY  
PETERBOROUGH, ONTARIO  
CANADA K9J 7B8

BRUCE R. BEST  
MARINE LABORATORY  
UOG STATION  
MANGILAO, GUAM 96913

ROBERT BIERI  
ANTIOCH COLLEGE  
YELLOW SPRINGS, OH 45307

CHARLES K. BIERNBAUM  
GRICE MAR. BIOL. LABORATORY  
COLLEGE OF CHARLESTON  
205 POPE JOHNSON  
CHARLESTON, SC 29412

ROSINA M. BIERNBAUM  
OCEANS PROGRAM  
CONGRESS OF THE UNITED STATES  
OFF. OF TECHNOLOGY ASSESSMENT  
WASHINGTON, DC 20510

THOMAS BIKSEY  
DEPT. OF BIOLOGY  
CALIFORNIA STATE UNIVERSITY  
LONG BEACH, CA 90840

EDWARD M. BIRD  
DEPT. OF ZOOLOGY  
UNIV. OF MARYLAND  
COLLEGE PARK, MD 20742

GALE A. BISHOP  
DEPT. OF GEOLOGY  
GEORGIA SOUTHERN COLLEGE  
STATESBORO, GA 30460

JOHN D. BISHOP  
OPRU, ORIELTON FIELD CENTRE  
PENDROKE, DYFED SA71 5EZ  
WALES, UK

JAMES M. BISHOP  
S.C. WILDLIFE & MAR. RES. DEPT.  
P.O. BOX 12259  
CHARLESTON, SC 29412

JOE B. BLACK  
DEPT. OF BIOLOGY  
LOUISIANA COLLEGE  
PINEVILLE, LA 71360

HARRY BLANCHET  
P.O. BOX 1616  
ABBEVILLE, LA 70510

DOROTHY E. BLISS  
BROOK FARM ROAD, R.R. 5  
WAKEFIELD, RI 02879

WARREN C. BLOW  
8109 HARTFORD AVE.  
SILVER SPRING, MD 20910

DONALD F. BOESCH  
LOUISIANA UNIV. MAR. CONSORT.  
STAR ROUTE BOX 541  
CHAUVIN, LA 70344

ANDREW BOGHEN  
DEPT. DE BIOL., UNIV. DE MONCTON  
CENTRE UNIV. DE MONCTON  
MONCTON, N.D. E1A 3E9  
CANADA

BILLY B. BOOTHE, JR.  
WESTMINSTER CLUB APTS E-4  
BRUNSWICK, GA 31520

MARY ANN EWERT BORCHERT  
GEOPHYSICAL INSTITUTE  
UNIVERSITY OF ALASKA  
FAIRBANKS, AK 99701

BETTY H. BOROWSKY  
OSBORN LAB. OF MARINE SCIENCES  
BOARDWALK AT WEST 8TH ST.  
BROOKLYN, NY 11224

ENRIQUE E. BOSCHI  
INST. NAC. INVEST. DEAS. PESQ.  
CASILLA DE CORREO 175  
7600 MAR DEL PLATA  
ARGENTINA

RAYMOND W. BOUCHARD  
7500 SEAVIEW AVENUE  
WILDWOOD CREST, NJ 08260

RONNIE BOUCHON  
DEPT. OF BIOLOGY  
UNIV. SOUTHWESTERN LOUISIANA  
BOX 42451  
LAFAYETTE, LA 70504

E. L. BOUSFIELD  
SENIOR SCIENTIST UNIT  
NATIONAL MUSEUM OF NAT. SCI.  
OTTAWA K1A 0M8  
CANADA

GEORGE D. BOUSQUETTE  
2480 I ST.  
PETALUMA, CA 94952

MARCIA A. BOWEN  
NORMANDEAU ASSOCIATES, INC.  
25 HUSHAU ROAD  
BEDFORD, NH 03102

SARANE T. BOWEN  
DEPT. OF BIOLOGICAL SCIENCES  
SAN FRANCISCO STATE UNIVERSITY  
1600 HOLLOWAY  
SAN FRANCISCO, CA 94132

THOMAS E. BOWMAN  
1Z NHB W323  
SMITHSONIAN INSTITUTION  
WASHINGTON, DC 20560

GEOFFREY A. BOXSHALL  
BRITISH MUSEUM (NAT. HIST.)  
CROMWELL ROAD  
LONDON SW7 5BD  
ENGLAND, UK

DAVID F. BRAKKE  
HUXLEY COLLEGE  
WESTERN WASHINGTON UNIVERSITY  
BELLINGHAM, WA 98225

JOSE BRESCIANI  
ZOOLOG. INST., ROY VET. & AGR. UN.  
BULOWSVEJ 13  
DK 1870 COPENHAGEN V  
DENMARK

ROBERT W. BRICK  
KING JAMES SHRIMP CO.  
2427 BOND STREET  
PARK FOREST SOUTH  
IL 60466

PHILIP T. BRIGGIE  
NYS-DEC  
FISH AND CRUSTACEANS UNIT  
BLDG 40, SUNY  
STONY BROOK, NY 11794

JOSEPH C. BRITTON  
DEPT. OF BIOLOGY  
TEXAS CHRISTIAN UNIVERSITY  
FORT WORTH, TX 76129

RICHARD D. BRODEUR  
MARINE SCIENCE CENTER  
NEWPORT, OR 97365

DIANE E. BROWN  
DEPT. OF CRUSTACEA  
AUSTRALIAN MUSEUM  
6-8 COLLEGE STREET  
SYDNEY, N.S.W., 2000 AUSTRALIA

STEPHEN K. BROWN  
DEPT. OF ZOOLOGY  
NELSON BIOLOGICAL LABORATORIES  
P.O. BOX 1059  
PISCATAWAY, NJ 08854

A. J. BRUCE  
THE DARWIN MUSEUM  
P.O. BOX 4646  
DARWIN  
AUSTRALIA 5794

NIEL L. BRUCE  
DEPT. OF ZOOLOGY  
UNIVERSITY OF QUEENSLAND  
BRISBANE, QUEENSLAND 4067  
AUSTRALIA

PIERRE BRUHEL  
DEPT. DE SCIENCES BIOLOGIQUES  
UNIV. DE MONTREAL, C.P. 6128  
MONTREAL, QUEBEC  
CANADA H3C 3J7

SUSAN L. BRUNENNEISTER  
NOAA, NMFS  
75 VIRGINIA BEACH DRIVE  
MIAMI, FL 33149

GARY J. BRUSCA  
DEPT. OF BIOLOGY  
HUHBOLOTT STATE UNIVERSITY  
ARCATA, CA 95521

RICHARD C. BRUSCA  
DEPT. OF BIOLOGY  
UNIV. OF SOUTHERN CALIFORNIA  
LOS ANGELES, CA 90007

BURTON B. BRYAN  
CHARLES T. MAIN, INC.  
SOUTHEAST TOWER  
PRUDENTIAL CENTER  
BOSTON, MA 02199

LIBARDO I. BUCHELLI  
APARTADO AEREO 279  
PASTO, NARIÑO  
COLOMBIA

SERGIO LUIZ DE SIQUEIRA BUENO  
DEPT. ZOOLOGIA, INST. BIOL.  
USP, C.P. 20520  
01.000 SAO PAULO  
BRAZIL

DORIS BULL  
DEPT. OF BIOLOGY  
RUTGERS UNIVERSITY  
NEWARK, NJ 07102

MARIE BUNDY  
628 WESTOVER AVENUE, APT. 4  
NORFOLK, VA 23507

W. D. BURBANCK  
P.O. BOX 15134  
ATLANTA, GA 30333

BEATRICE L. BURCH  
P.O. BOX 309  
KAILUA, HI 96734

FREDERIC F. BURCHSTED  
TEXAS MEMORIAL MUSEUM  
2400 TRINITY  
AUSTIN, TX 78705

JENNIE L. BURKE  
FLORIDA DEPT. OF NAT. RES.  
100 8TH AVE., S.E.  
ST. PETERSBURG, FL 33701

MARTIN D. BURKENROAD  
3169 BREMERTON PLACE  
LA JOLLA, CA 92037

BRYAN R. BURNETT  
1624 DE BANN RD.  
CARDIFF-BY-THE-SEA, CA 92007

H. BUSDOSH  
WOODWARD-CLYDE CONSULTANTS  
3499 KURTZ STREET  
SAN DIEGO, CA 92110

MARK J. BUTLER IV  
DEPT. OF ZOOLOGY - OSU  
1735 NEIL AVENUE  
COLUMBUS, OH 43201

KENNETH H. BYNUM  
DEPT. OF ZOOLOGY  
WILSON HALL 046-A  
UNIV. OF NORTH CAROLINA  
CHAPEL HILL, NC 27514

EDESEL A. CAINE  
DEPT. OF MARINE SCIENCE  
U.N.C. AT BEAUFORT  
BEAUFORT, SC 29902

KALANI D. CAIRNS  
HARBOR BRANCH FOUNDATION  
R.R.1, BOX 196  
MT. PIERCE, FL 33450

ROY L. CALDWELL  
DEPT. OF ZOOLOGY  
UNIV. OF CALIFORNIA, BERKELEY  
BERKELEY, CA 94720

PAUSTILO CANAREMA  
APDO. POSTAL 2565  
ENSENADA, B.C.H.  
MEXICO

DAVID K. CAMP  
FLA. DEPT. OF NATURAL RES.  
MARINE RESEARCH LABORATORY  
100 EIGHTH AVE. SE  
ST. PETERSBURG, FL 33701

ANTONIO F. CAMPANER  
DEPT. ZOOLOGIA, INST. BIOL.  
UNIV. SAO PAULO, C.P. 20520  
05421 SAO PAULO  
BRAZIL

ALAN CAMPBELL  
BIOLOGICAL STATION  
DEPT. OF FISHERIES & OCEANS  
ST. ANDREWS, N.B. E0G 2X0  
CANADA

ANGELA C. CANTELHO  
RAHAPO COLLEGE  
505 RAHAPO VALLEY ROAD  
RAHAWA, NJ 07430

GREGORY H. CAPELLI  
DEPT. OF BIOLOGY  
COLLEGE OF WILLIAM AND MARY  
WILLIAMSBURG, VA 23185

VICTOR A. CAPRILES  
DEPT. OF BIOLOGY  
UNIV. INTERAMERICANA DE P.R.  
SAN GERMAN, PR 00753

JERRY A. CARPENTER  
DEPT. OF BIOLOGICAL SCIENCES  
NORTHERN KENTUCKY UNIVERSITY  
HIGHLAND HEIGHTS, KY 41076

JAY C. CARROLL  
TEMA CORP. MARINE STUDIES GR.  
P.O. BOX 400  
AVILA BEACH, CA 93424

JOHN W. CARTER  
LOCKHEED CENTER, MARINE RES.  
6350 YARROW DRIVE "A"  
CARLSBAD, CA 92008

ALBERTO CARVACHO  
DEPTO. DE OCEANOGRAFIA  
C.I.C.E.S.E.  
P.O. BOX 4844  
SAN YSIDRO, CA 92073

DANIEL CARVER  
309 GREENWOOD ROAD  
LINTHICUM, MD 21090

FREDERICK J. CASSELS  
ELECTRO-NUCLEONICS LABS, INC.  
12050 TECH ROAD  
SILVER SPRING, MD 20904

FRANK L. CASTILLE, JR.  
TAMU SHRIMP HATCHERY PROJ  
P.O. DRAWER 0  
PORT ARANSAS, TX 78373

RAUL CASTRO R.  
INST. INVEST. OCEANOLÓGICAS  
CASILLA 1240  
ANTOFAGASTA  
CHILE

FENNER A. CHACE, JR.  
IZ NH 0323  
SMITHSONIAN INSTITUTION  
WASHINGTON, DC 20560

NORMAN A. CHAMBERLAIN  
GRICE MARINE BIOLOGICAL LAB.  
205 FORT JOHNSON  
CHARLESTON, SC 29412

CARLENE L. CHAMBERS  
1116 WAKE DRIVE  
RICHARDSON, TX 75081

JOHN CHAPHAN  
DEPT. OF BIOLOGY  
UNIVERSITY OF CALIFORNIA  
SANTA BARBARA, CA 93106

PAUL W. CHAPMAN  
C/O SANDERS ASSOCIATES, INC.  
HQ 1-615/0-1151  
DANIEL WEBSTER HIGHWAY SOUTH  
NASHUA, NH 03061

CLAUDIO CHAVEZ-JUSTO  
AMERICAS 93 ENTRE BLVD Y COSTA  
VERDE  
VERACRUZ, VERACRUZ  
MEXICO

KAMA CHENGALATH  
INVERTEBRATE ZOOLOGY  
NATIONAL MUS. OF NATURAL SCI.  
OTTAWA, ONTARIO  
CANADA K1A 0H8

CARLOS A CHING  
MUSEUM OF BIOLOGY  
UNIVERSITY OF PUERTO RICO  
SAN JUAN, PR 00931

DUSTIN D. CHIVERS  
DEPT. OF INVERTEBRATE ZOOLOGY  
CALIFORNIA ACADEMY OF SCIENCES  
GOLDEN GATE PARK  
SAN FRANCISCO, CA 94118

DONG-HYUN CHO  
BIOLOGY DEPARTMENT  
KANG NEON NATIONAL UNIVERSITY  
CHUNG CHON 200  
KOREA

HARIT E. CHRISTIANSEN  
ZOOLOGICAL MUS., UNIV. OF OSLO  
SARSGT. 1, OSLO 5  
NORWAY

MARTIN L. CHRISTOFFERSEN  
UNIV. FED. PARAIBA, DEPTO. BIOL.  
CURT DE CIENC. EXATAS E NATU.  
58.000, JOAO PESSOA, PAR.,  
BRAZIL

JAY P. CHRISTOFFERSON  
DEPT. OF BIOLOGY  
CALIF. ST. COLL., STANISLAUS  
TURLOCK, CA 95380

CARLOS G. CHRISTOFFERSEN  
KRISTIANSD LÆRFRØHSSKOLE  
KONGSBERG ALLE 20  
N-4600 KRISTIANSD  
NORWAY

JOHN H. CHRISTY  
P.O. BOX 801  
GEORGETOWN, SC 29440

KYUNG S. CHUNG  
APARTADO 259  
INSTITUTO OCEANOGRÁFICO  
CUMANÁ 6101A  
VENEZUELA

JOHN L. CISHE  
DEPT. OF GEOLOGICAL SCIENCES  
CORNELL UNIVERSITY  
ITHACA, NY 14853

DARRYL R. CLARK  
118 ST. JAMES DRIVE  
LAFAYETTE, LA 70506

HENRY C. CLIFFORD  
ROUTE 3, BOX 741  
CRYSTAL RIVER, FL 32629

FRED L. CLOGSON  
DEPT. OF BIOLOGICAL SCIENCES  
CAL. POLYTECHNIC STATE UNIV.  
SAN LUIS OBISPO, CA 93401

LOREN D. COEN  
DEPT. OF ZOOLOGY  
UNIVERSITY OF MARYLAND  
COLLEGE PARK, MD 20742

ANNE C. COHEN  
HHB STOP 163  
SMITHSONIAN INSTITUTION  
WASHINGTON, DC 20560

DAN COHEN  
AQUACULT. PROD. TECH. (ISRAEL)  
P.O. BOX 4330  
JERUSALEM  
ISRAEL

L. BENARD COLVIN  
ENVIRONMENTAL RESEARCH LAB.  
TUCSON INTERNATIONAL AIRPORT  
TUCSON, AZ 85706

CHRISTOPHER L. COMBS  
P.O. DRAWER FH  
COLLEGE STATION, TX 77840

THOMAS R. CONSI  
BOX 1003 FAIRCHILD  
DEPT. OF BIOLOGICAL SCIENCES  
COLUMBIA UNIVERSITY  
NEW YORK, NY 10027

HARRY L. COOK  
9 JALAN CENGAI  
JOHOR DARU  
MALAYSIA

WILLIAM J. COOKE  
ZOOLOGY-2538 THE HALL  
UNIVERSITY OF HAWAII  
HONOLULU, HI 96822

JOHN E. COOPER  
N.C. STATE MUS. OF NAT. HIST.  
P.O. BOX 27647  
RALEIGH, NC 27611

JEFFERY R. CORDELL  
UNIV. OF WASHINGTON  
260 FISHERIES CENTER  
KH-10  
SEATTLE, WA 98195

GIUSEPPE COSTANZO  
INST. DI IDROBIOLOGIA  
VIA DEL VERDI, 75  
UNIVERSITA MESSINA  
ITALY

BRUCE C. COULL  
FARUCH INSTITUTE  
UNIV. OF SOUTH CAROLINA  
COLUMBIA, SC 29206

KENNETH O. COYLE  
INSTITUTE OF MARINE SCIENCE  
UNIV. OF ALASKA  
FAIRBANKS, AK 99701

LIN D. CRAFT  
DEPT. OF BIOLOGICAL SCIENCES  
UNIV. OF SOUTHERN CALIFORNIA  
LOS ANGELES, CA 90007

MARIA CRIALES  
C/O U. HOODT  
ZOOLOGISCHES INSTITUT  
OLSHAUSENSTR. 40/60  
D-3200 KIEL 1, GERMANY (FRG)

ROBERT A CROKER  
DEPT. OF BIOL. SPAULDING BLDG.  
UNIV. OF NEW HAMPSHIRE  
DURHAM, NH 03824

JASHINE CUZIN-ROUDY  
STATION ZOOLOGIQUE  
06230 VILLEFRANCHE-SUR-MER  
FRANCE

ANTHONY D'AGOSTINO  
P.O. BOX 542  
MONTAUK, NY 11954

MICHAEL J. DADSWELL  
FISHERIES AND OCEANS CANADA  
BIOL. STATION, ST. ANDREWS  
NEW BRUNSWICK B0G 2X0  
CANADA

G.-J. DALLA VIA  
INSTITUT FÜR ZOOHYGIELOGIE  
PETER-MAYR-STR. 1A  
A-6020 INNSBRUCK  
AUSTRIA

DAVID H. DAMKAER  
UNIVERSITY OF WASHINGTON WD-10  
SEATTLE, WA 98195

MIKE R. DARDEAU  
1655 ERNEST DRIVE  
MOBILE, AL 36609

THOMAS D. DARROW  
DEPT. OF BIOLOGY  
LEWIS & CLARK COLLEGE  
L.C. BOX 53  
PORTLAND, OR 97219

CHARLES C. DAVIS  
DEPT. OF BIOLOGY  
MEM. UNIV., NEW FOUNDLAND  
ST JOHNS, NEWFOUNDLAND A1B 3X9  
CANADA

DAVID J. DAVIS  
DEPT. OF ZOOLOGY  
UNIV. OF N.C., CHAPEL HILL  
WILSON HALL 046 A  
CHAPEL HILL, NC 27514

CLAUDE DE BROYER  
INST. ROY. SCI. NAT. BELGIQUE  
RUE VAUTIER, 29  
B-1040 BRUSSELS  
BELGIUM

EMILY DEEVER  
6904 MANATEE AVENUE W.  
APT. 15-A  
BRADENTON, FL 33529

PATRICIA J. DECOURSEY  
BARUCH INST., MARINE SCIENCES  
UNIVERSITY OF SOUTH CAROLINA  
COLUMBIA, SC 29209

GREG B. DEETS  
417 CENTER STREET  
EL SEGUNDO, CA 90245

C. DELAMARE DEBOUTTEVILLE  
LAB. D'ECOLOGIE GENERALE  
4, AVE. DU PETIT CHATEAU  
BRUNOY, 91800  
FRANCE

PAUL M. DELANEY  
CRUSTACEA LABORATORY  
ALLAN HANCOCK FOUNDATION  
UNIV. OF SOUTHERN CALIFORNIA  
LOS ANGELES, CA 90007

LYNDA F. DELPH  
DEPT. ECOL. & EVOLUTION. BIOL.  
UNIVERSITY OF ARIZONA  
TUCSON, AZ 85721

JOHN D. DeMOND  
1231 BROOKHOLLOW DRIVE  
BATON ROUGE, LA 70810

ELIZABETH J. DENLEY  
SCRIPPS INST. OF OCEANOGRAPHY  
A-001  
LA JOLLA, CA 92093

GUY J. DEHOUX  
DEPT. OF OCEANOGRAPHY  
TEXAS A & M UNIVERSITY  
COLLEGE STATION, TX 77843

CHARLES D. DERBY  
WHITNEY LAB., UNIV. OF FLORIDA  
ROUTE 1, BOX 121  
ST. AUGUSTINE, FL 32084

DANA V. DEVINE  
413-A YATES COURT  
CHAPEL HILL, NC 27514

RALPH A. DICAPRIO  
DEPT. OF BIOLOGICAL SCIENCE  
SUNY AT BUFFALO  
BUFFALO, NY 14260

BRUCE E. DICKAU  
DEPT. OF BIOLOGY  
COLLEGE OF SAINT BENEDICT  
ST. JOSEPH, MN 56374

JOHN. J. DICKINSON  
NAT. MUS. CANADA, CRUSTACEA  
2378 HOLLY LANE  
OTTAWA K1A 0M8  
CANADA

GARY W. DICKSON  
6504 KENHOWER DRIVE  
BETHESDA, MD 20034

CAROL E. DIEBEL  
301 H STREET  
ARCATA, CA 95521

ANA DITTEL  
APDO 30 TIBAS  
SAN JOSE  
COSTA RICA

TRAN THE DO  
FAC. APPLIED BIOL. SCIENCES  
HIROSHIMA UNIVERSITY  
2-17 HIDORI-CHO, FUKUYAMA  
JAPAN (720)

SHELDON DOBKIN  
DEPT. OF BIOLOGICAL SCIENCES  
FLORIDA ATLANTIC UNIVERSITY  
BOCA RATON, FL 33432

MASAHIRO DOJIRI  
BOSTON UNIV. MARINE PROGRAM  
MARINE BIOLOGICAL LABORATORY  
WOODS HOLE, MA 02543

TERRY J. DONALDSON  
DEPT. OF BIOLOGICAL SCIENCES  
ILLINOIS STATE UNIVERSITY  
NORMAL, IL 61761

WILLIAM E. DONALDSON  
ALASKA DEPT. OF FISH & GAME  
570 W 53RD STREET  
ANCHORAGE, AK 99502

RICHARD E. DOWDS  
1789-5 BEAL AVENUE  
ANN ARBOR, MI 48105

PIERRE J. L. DRACH  
LABORATOIRE ARAGO  
66650 BANYULS-SUR-MER  
FRANCE

LAWRENCE M. DRAZBA  
AVENIDA D#654  
COLONIA SEATTLE, ZAPOCAN  
JALISCO  
MEXICO

BILLY R. DRUMMOND  
CASTLE AND COOKE, INC.  
P.O. BOX 3928  
SAN FRANCISCO, CA 94119

P. L. DUDLEY  
DEPT. OF BIOLOGICAL SCIENCES  
BARHARD COLLEGE  
COLUMBIA UNIVERSITY  
NEW YORK, NY 10027

PATRICIA J. DUGAN  
ROUTE 2, BOX 393-A  
TALLAHASSEE, FL 32301

DAVID W. DUGAS  
BIOLOGY DEPARTMENT  
TULANE UNIVERSITY  
NEW ORLEANS, LA 70118

THOMAS K. DUNCAN  
BOSTON UNIV. MARINE PROGRAM  
MARINE BIOLOGICAL LABORATORY  
WOODS HOLE, MA 02543

D. W. DUNHAM  
DEPT. OF ZOOL., UNIV OF TORONTO  
25 HARBORD STREET  
TORONTO, ONTARIO M5S 1A1  
CANADA

PATRICK H. EGGLESTON  
BIOLOGY SECTION  
KEENE STATE COLLEGE  
KEENE, NH 03431

LUCIUS G. ELDREDGE  
MARINE LABORATORY  
UNIVERSITY OF GUAM  
P.O. BOX EK  
AGANA, GUAM 96910

ROLF ELOPSSON  
DEPARTMENT OF ZOOLOGY  
HELGONAVAGEN 3  
S-22363 LUND  
SWEDEN

YOSHINARI ENDO  
LAB. OF OCEANOGRAPHY  
TOHOKU UNIVERSITY  
SENDAI 980  
JAPAN

LARRY L. ENG  
1701 NIMBUS ROAD, SUITE "C"  
RANCHO CORDOVA, CA 95670

JOHN H. ENGLE  
CATALINA MARINE SCIENCE CTR.  
P.O. BOX 398  
AVALON, CA 90704

NORMAN A. ENGSTROM  
DEPT. BIOL. SCIENCES  
NORTHERN ILLINOIS UNIVERSITY  
DE KALE, IL. 60115

HEINRICH ESSL  
UNIVERSITAT WIEN  
LUEGERRING 1  
A1010 WIEN  
AUSTRIA

ERNST D. ESTEVEZ  
MOTE MARINE LAB.  
1600 CITY ISLAND PARK  
SARASOTA, FL. 33577

WILLIAM S. ETTINGER  
SKELLY & LOY  
2601 N. FRONT ST.  
HARRISBURG, PA. 17110

WILLIAM H. EVOY  
DEPT. OF BIOLOGY  
UNIVERSITY OF MIAMI  
P.O. BOX 249118  
CORAL GABLES, FL 33124

JOSEPH J. EWALD  
APDO. 1198  
MARACAIBO 4001-A  
VENEZUELA

JAN ROBERT FACTOR  
GENETICS & DEVELOPMENT  
BRADFORD HALL  
CORNELL UNIVERSITY  
ITHACA, NY 14853

A. FARMANFARMAIAN  
DEPT. OF PHYSIOLOGY  
NELSON LAB  
RUTGERS UNIVERSITY  
NEW BRUNSWICK, NJ 08903

A.S.D. FARMER  
HARICULTURE & FISHERIES DEPT.  
KUWAIT INST. FOR SCI. RESEARCH  
P.O. BOX 24885  
SAFAT, KUWAIT

MARY FARMER  
P O BOX 6  
S.F.A.  
WOODS HOLE, MA 02543

HOWARD M. FEDER  
INSTITUTE OF MARINE SCIENCE  
UNIVERSITY OF ALASKA  
FAIRBANKS, AK 99701

DARRYL L. FELDER  
DEPARTMENT OF BIOLOGY  
UNIVERSITY OF SW LOUISIANA  
P. O. BOX 42451  
LAFAYETTE, LA 70504

RODNEY H. FELDMANN  
DEPARTMENT OF GEOLOGY  
KENT STATE UNIVERSITY  
KENT, OHIO 44242

BRUCE E. FELGENHAUER  
DEPT. OF BIOL. SCIENCE  
FLORIDA STATE UNIVERSITY  
TALLAHASSEE, FL 32306

FRANK D. FERRARI  
S.O.S.C.  
SMITHSONIAN INSTITUTION  
WASHINGTON, DC 20560

ANN H. FIELDING  
480 OLINDA ROAD  
HAKAWAO, HI 96768

NILTON FINGERMAN  
DEPARTMENT OF BIOLOGY  
TULANE UNIVERSITY  
NEW ORLEANS, LA 70118

JOSEPH F. FITZPATRICK, JR.  
DEPT. OF BIOL. SCIENCES  
UNIV. OF SOUTH ALABAMA  
MOBILE, AL 36688

JOHN W. FLEEGER  
DEPARTMENT OF ZOOLOGY  
LOUISIANA STATE UNIVERSITY  
BATON ROUGE, LA 70803

DAVID V. FLUSHING  
4849 BOGARD CT.  
ST. LOUIS, MO 63128

MICHAEL F. FLYNN  
649 RUNSON ROAD  
ROCHESTER, NY 14616

RICHARD A. FOREMAN  
4157 W. 16TH AVENUE  
VANCOUVER, B.C. V6R 3E4  
CANADA

J. FOREST  
LAB. DE ZOOL. (ARTHROPODES)  
MUS. NAT. D HISTOIRE NATURELLE  
61 RUE DE BUFFON  
75005 PARIS, FRANCE

RICHARD M. FORESTER  
MS 919 PTS USGS  
DENVER FED. CENTER  
DENVER, CO 80225

CAROLYN A. FOSTER  
COLLEGE OF FISHERIES  
UNIVERSITY OF WASHINGTON  
SEATTLE, WA 98195

ANN B. FRAME  
WPA, NMFS  
SANDY HOOK LABORATORY  
HIGHLANDS, NJ 07732

L. RICHARD FRANZ  
FLORIDA STATE MUSEUM  
GAINESVILLE, FL 32611

THOMAS J. FREDETTE  
DEPT. OF INVERTEBRATE ECOLOGY  
VA INSTITUTE OF MARINE SCIENCE  
GLOUCESTER POINT, VA 23062

JOHN A. FREEMAN  
DUKE UNIVERSITY MARINE LAB.  
BEAUFORT, NC 28516

DAVID G. FREY  
DEPARTMENT OF BIOLOGY  
INDIANA UNIVERSITY  
BLOOMINGTON, IN 47405

JAMES A. FRIEND  
W.A. WILDLIFE RESEARCH CENTRE  
P.O. BOX 51, WANNEROO  
W.A. 6061  
AUSTRALIA

CARLO PROGLIA  
ISTITUTO DI TECNOLOGIA DELLA  
PESCA  
MOLO MANDRACCHIO  
60100 ANCONA, ITALY

BRUCE W. FROST  
DEPT. OF OCEANOGRAPHY WB 10  
UNIVERSITY OF WASHINGTON  
SEATTLE, WA 98195

YASUSHI FUKUDA  
FACULTY OF EDUCATION  
KUMAHOTO UNIVERSITY  
KUMAHOTO 860  
JAPAN

CRAIG A. FUSARO  
435 EL SUEÑO  
SANTA BARBARA, CA 93110

MICHAEL GABLE  
DEPT. OF BIOLOGY  
EASTERN CONN. STATE COLLEGE  
WILLIAMSCT, CT 06226

JEAN N. GAGNON  
6380 RUE D'ARAGON  
MONTREAL, QUEBEC  
CANADA H4E 3B1

BELLA GALIL  
DEPARTMENT OF ZOOLOGY  
TEL AVIV UNIVERSITY  
RAMAT AVIV  
TEL AVIV, ISRAEL

SIGEO GANO  
10-26-303, KOHINATA 1 CHONE  
BUNKYO-KU  
TOKYO, 112 JAPAN

J. ENRIQUE GARCIA RASO  
DEPTO. ZOOLOGIA  
UNIVERSIDAD DE MALAGA  
MALAGA  
SPAIN

JULIO GARCIA-GOMEZ  
3245 S.W. 2 STREET  
MIAMI, FL 33135

SUSAN P. GARNER  
INST. MARINBIOLOGI OG LIMN.  
AVD. MARIN ZOOL. OG KJEMI  
PB 1064, BLIND., OSLO, 3  
NORWAY

JOHN S. GARTH  
ALLAN HANCOCK FOUNDATION  
UNIV. OF SO. CALIFORNIA  
LOS ANGELES, CA 90007

DAVID C. GEDDES  
DEPT. OF BIOLOGY  
PAISLEY COLLEGE OF TECHNOLOGY  
HIGH ST., PAISLEY,  
RENFREWSHIRE, SCOTLAND PA1 2BE

JONATHAN B. GELLER  
DEPT. OF GEOLOGY  
UNIV. OF CALIFORNIA  
DAVIS, CALIFORNIA 95616

ROBERT Y. GEORGE  
INST. OF MAR. BIOMEDICAL RES.  
UNIV. OF NORTH CAROLINA  
WILMINGTON, NC 28401

PAUL D. GERDES  
JEFFERSON HALL  
VIRGINIA INST. OF MARINE SCI.  
GLOUCESTER POINT, VA 23062

MICHAEL T. GHISELIN  
DEPT. OF BIOLOGY  
UNIVERSITY OF UTAH  
SALT LAKE CITY, UT 84112

SANDRA L. GILCHRIST  
DEPT. OF BIOLOGICAL SCIENCE  
FLORIDA STATE UNIVERSITY  
TALLAHASSEE, FL, 32306

W. NEIL GILLIES  
6372 SW 34 STREET  
MIAMI, FL 33155

GARY GILLINGHAM  
P O BOX 223  
MOSS LANDING, CA 95039

HNO. GINES  
FUNDACION LA SALLE  
APDO. 1930  
CARACAS, 1010  
VENEZUELA

R. GINET  
UNIV. DE LYON I HYDROBIOLOG  
ET ECOLOGIE SOUTERRAINES 43  
F-69622 VILLEURBANNE CEDEX  
FRANCE

LEO G. GINGRAS  
DEPT. OF BIOLOGY  
UNIV. OF SW LOUISIANA  
P.O. BOX 42451  
LAFAYETTE, LA 70504

GARY D. GOEKE  
4008 COTTAGE HILL ROAD  
MOBILE, AL 36609

EXEQUIEL B. GONZALEZ  
SCHOOL OF OCEANOGRAPHY  
OREGON STATE UNIVERSITY  
CORVALLIS, OREGON 97331

EDUARDO GONZALEZ-GURRIARAN  
INST. ESPANOL DE OCEANOGRAFIA  
APDO DE CORREOS 130  
LA CORUNA, SPAIN

DONALD N. GOOCH  
RT. 1, BOX 339-D  
ST. MARTINSVILLE, LA 70582

RICHARD U. GOODING  
19 HIGHGATE PARK  
ST. MICHAEL  
BARBADOS

ROBERT H. GORE  
SMITHSONIAN INSTITUTION  
FORT PIERCE BUREAU  
R.R.#1, P.O. BOX 194-C  
FORT PIERCE, FL 33450

NICHOLAS J. GOTELLI  
DEPT. OF BIOLOGICAL SCIENCE  
FLORIDA STATE UNIVERSITY  
TALLAHASSEE, FL 32306

JOSEPH W. GOY  
DUKE UNIVERSITY  
MARINE LABORATORY  
BEAUFORT, NC 28516

ROBERT W. GRABB  
164 YODER LANE  
VIRGINIA BEACH, VA 23462

F. GRAP  
BIOLOGIE ANIMALE ET GENERALE  
FACULTE DES SCIENCES  
6 BOULEVARD GABRIEL  
21000 DIJON, FRANCE

GEORGE C. GRANT  
VA INST. OF MARINE SCIENCE  
GLOUCESTER POINT, VA 23062

JONATHAN GREEN  
DEPT. OF BIOLOGY  
ROOSEVELT UNIVERSITY  
430 SOUTH MICHIGAN AVENUE  
CHICAGO, IL 60605

CHARLES H. GREENE  
WB-10 DEPT. OF OCEAN  
UNIVERSITY OF WASHINGTON  
SEATTLE, WA 98195

HOLLY GREENING  
INSTITUTE OF ECOLOGY  
UNIVERSITY OF GEORGIA  
ATHENS, GA 30602

BEVERLY N. GREENSPAN  
DEPT. OF BIOLOGY  
BOWDOIN COLLEGE  
BRUNSWICK, ME 04011

DOUGLAS R. GREGORY  
CENTER FOR QUANT. SCIENCE  
HR-20 COLLEGE OF FISHERIES  
UNIV. OF WASHINGTON  
SEATTLE, WA 98195

SUSAN E. GRESENS  
DEPT. OF ZOOLOGY  
UNIVERSITY OF WISCONSIN  
MADISON, WI 53706

DARRYL L. GREY  
7 ISAHAI COURT  
SANDERSON, N.T., 5793  
AUSTRALIA

H. E. GRUNER  
ZOOLOGISCHES MUSEUM  
UNVALIDENSTRASSE 43  
BERLIN 104  
GERMANY (DDR)

MARK J. GRYGIER  
SCRIPPS INST. OF OCEAN.  
A-00B  
LA JOLLA, CA 92093

MODEST GUTU  
"GRIGORE ANTIPA"  
NATURAL HISTORY MUSEUM  
SOSEAU KISELEFF, 1  
BUCHAREST, 63, ROMANIA

YUL HAASHANN  
DEPT. DE OCEANOGRAPIA  
C.I.C.E.S.E.  
P. O. BOX 4844  
SAN YSIDRO, CA 92073

FRANK HADDOH  
60 GREENFIELD ROAD  
EMPIRE BAY NSW 2256  
AUSTRALIA

PAUL A. HAEFNER, JR.  
DEPARTMENT OF BIOLOGY  
ROCHESTER INST. OF TECHNOLOGY  
ROCHESTER, NY 14623

RICHARD P. HAGER  
DIV. OF NATURAL SCI. & MATH  
STOCKTON STATE COLLEGE  
POHONA, N. J. 08240

JANET HAIG  
ALLAN HANCOCK FOUNDATION  
UNIVERSITY OF SO. CALIFORNIA  
LOS ANGELES, C. A. 90007

KEVIN HALCROW  
BIOLOGY DEPARTMENT  
UNIV. OF NEW BRUNSWICK  
P. O. BOX 5050  
ST. JOHN, N.B., CANADA E2L 4L5

SAHUEL R. HALEY  
DEPT. OF ZOOLOGY  
UNIVERSITY OF HAWAII  
HONOLULU, HI 96822

TIMOTHY L. HAAKER  
ENVIRON. RESEARCH & TECH. INC.  
1716 HEATH PARKWAY  
FT. COLLINS, CO 80524

KATHRYN A. HAMILTON  
WHITNEY MARINE LAB.  
RT. 1, BOX 121  
ST. AUGUSTINE, FL 32094

STEVEN C. HAND  
MARINE BIOLOGY A-002  
SCRIPPS INST. OF OCEANOGRAPHY  
LA JOLLA, CA 92093

JONATHAN D. HANDRUS  
1380 GARNET, SUITE E-121  
SAN DIEGO, CA 92109

BRENDA J. HANN  
DEPT. OF BIOLOGY  
UNIVERSITY OF WINDSOR  
WINDSOR, ONTARIO N9B 3P4  
CANADA

EIJI HARADA  
SETO MARINE BIOLOGICAL LAB.  
SHIRAHAMA, NISHIHURU  
WAKAYAMA, 649-22  
JAPAN

G. RICHARD HARBISON  
AUSTRALIAN INST. OF MAR. SCI.  
PHB NO. 3  
TOWNSVILLE, N.S.O.  
C.4810 AUSTRALIA

LESLIE H. HARRIS  
SO CAL COASTAL WAT RES PROJ  
646 W PACIFIC COAS HIGHWAY  
LONG BEACH, CA 90806

MARY ELLEN HARRIS  
BIOLOGY DEPARTMENT  
UNIVERSITY OF DUBUQUE  
DUBUQUE, IA 52001

SANDRA HARRIS  
DEPT. DE ZOOLOGI  
INST. DE BIOLOGIA OPRJ  
CIDADA UNIV. I OC A  
21940 RIO DE JANEIRO, BRAZIL

BRENDA J. HARRISON  
INST. OF OCEANOGRAPHY  
UNIV. OF BRITISH COLUMBIA  
2075 WESTBROOK MALL  
VANCOUVER, B.C., CANADA V6T 1W5

KEITH HARRISON  
DEPT. OF ZOOLOGY  
UNIV. OF NOTTINGHAM  
UNIVERSITY PARK  
NOTTINGHAM, NG7 2RD, U. K.

KIM E. HARRISON  
RSMAS-BLR  
4600 RICKENBACKER CAUSEWAY  
MIAMI, FL 33149

JOSEPHINE F. L. HART  
410 QUEEN ANNE HEIGHTS  
VICTORIA, BRITISH COLUMBIA  
CANADA V8S 4K6

C. W. HART, JR.  
IZ NHB STOP 163  
SMITHSONIAN INSTITUTION  
WASHINGTON, D. C. 20560

HIROSHI HATTORI  
LAB. OF OCEANOGRAPHY  
FACULTY OF AGRICULTURE  
TOHOKU UNIVERSITY  
SENDAI 980, JAPAN

HAREA E. HATZIOLOS  
DEPT. OF BIOLOGY  
OSBORNE MEM. LABS  
YALE UNIVERSITY  
NEW HAVEN, CT 06520

KEN-ICHI HAYASHI  
SHIMONOSEKI UNIV. OF FISHERIES  
YOSHIMA, SHIMONOSEKI CITY  
YAHAGUCHI-KEN, 756-65  
JAPAN

BRIAN A. HAZLETT  
DIV. OF BIOLOGICAL SCIENCES  
UNIVERSITY OF HICHTIGAN  
ANN ARBOR, MI 48109

RICHARD W. HEARD, JR.  
GULF COAST RESEARCH LABORATORY  
EAST BEACH ROAD  
OCEAN SPRINGS, MS 39564

JOEL W. HEDGPETH  
5660 MONTECITO AVE.  
SANTA ROSA, CA 95404

MARTIN A. HEGYI  
DEPT. OF BIOLOGICAL SCIENCES  
FORDHAM UNIVERSITY  
BRONX, NY 10458

JOHN H. HEINEN  
101 1/2 BOYD STREET  
NEWTON, MA 02158

CARY HELLMAN  
DEPT. OF ZOOLOGY  
4079 LIFE SCIENCES BLDG.  
UNIVERSITY OF CALIFORNIA  
BERKELEY, CA 94704

E. E. HENDRICKX  
ESTACION MAZATLAN UHAF  
P. O. BOX 811  
MAZATLAN, SINALOA  
MEXICO

YVES HENOCQUE  
APASUB  
ECLOSERIE  
56170 HOUAT  
FRANCE

DORA P. HENRY  
DEPT. OF OCEANOGRAPHY WB-10  
UNIVERSITY OF WASHINGTON  
SEATTLE, WA 98125

HAX T. HENSCHEN  
4307 GREENWAY DRIVE  
INDIANAPOLIS, IN 46220

SIDNEY S. HERMAN  
DEPARTMENT OF BIOLOGY  
WILLIAMS HALL #31  
LEHIGH UNIVERSITY  
BETHLEHEM, PA 18015

JORGE LUIS HERNANDEZ-AGUILERA  
APARTADO POSTAL 27-269  
MEXICO 7, D. F.  
MEXICO

GAYLE A. HERON  
DEPT. OF OCEANOGRAPHY WB-10  
UNIVERSITY OF WASHINGTON  
SEATTLE, WA 98195

ALOIS HERZIG  
INSTITUT FUR LIMNOLOGIE  
A-5310 GAISBERG  
AUSTRIA

ROBERT R. HESSLER  
A-002  
SCRIPPS INST. OF OCEANOGRAPHY  
LA JOLLA, CA 92093

BETTY S. HESTER  
DEPT. OF OCEANOGRAPHY  
OLD DOMINION UNIVERSITY  
NORFOLK, VA 23508

GORDON C. HEWITT  
VICTORIA UNIVERSITY  
PRIVATE BAG  
WELLINGTON  
NEW ZEALAND

REGINE HIPEAU-JACQUOTTE  
RUE BATTERIE-DES-LIONS  
13007 MARSEILLE  
FRANCE

JU-SHEY HO  
DEPT. OF BIOLOGY  
CALIFORNIA UNIVERSITY  
LONG BEACH, CA 90840

HORTON H. HOBBS, III  
DEPARTMENT OF BIOLOGY  
WITTENBERG UNIVERSITY  
SPRINGFIELD, OH 45501

HORTON H. HOBBS, JR.  
3438 HANSFIELD ROAD  
FALLS CHURCH, VA 22042

HAX K. HOBERG  
DEPARTMENT OF BIOLOGY  
HUMBOLDT STATE UNIVERSITY  
ARCATA, CA 95521

DAVID C. HOCKIN  
CULTERTY FIELD STATION  
UNIV. ABERDEEN, NEWBURGH ELLON  
ABERDEENSHIRE AB4 0AA  
SCOTLAND, U. K.

JAMES C. HODGES, JR.  
9855 LAVIEW CIRCLE  
ROSWELL, GA 30075

DANIEL L. HOFFMAN  
DEPARTMENT OF BIOLOGY  
EUCKNELL UNIVERSITY  
LEWISBURG, PA 17837

PETER J. HOGARTH  
DEPT. OF BIOLOGY  
UNIVERSITY OF YORK  
HESLINGTON, YORK YO1 5DD  
UNITED KINGDOM

DAVID H. HOLDICH  
DEPT. OF ZOOLOGY  
THE UNIVERSITY  
NOTTINGHAM NG7 2RD  
ENGLAND

HEATHER HOLMAN  
IRA C. DARLING CENTER  
UNIVERSITY OF MAINE  
WALPOLE, ME 04573

JEFF G. HOLMQUIST  
NEWFOUND HARBOR MARINE INST.  
ROUTE 3, BOX 170  
BIG PINE KEY, FL 33043

JOHN R. HOLSINGER  
DEPT. OF BIOL. SCIENCES  
OLD DOMINION UNIVERSITY  
NORFOLK, VA 23508

L. B. HOLTHUIS  
RIJKSMUSEUM VAN NAT. HISTORIE  
POSTBUS 9517  
2300 RA LEIDEN  
THE NETHERLANDS

JURIJ HONZIAK  
12-5 VENABLE HALL 045A  
UNIV. OF NORTH CAROLINA  
CHAPEL HILL, NC 27514

ALLAN F. HOOKER  
P. O. BOX 369-370 HESC  
DAUPHIN ISLAND, AL 36528

THOMAS L. HOPKINS  
DEPT. OF MARINE SCIENCE  
UNIV. OF SO. FLORIDA  
830 SOUTH 1ST STREET  
ST. PETERSBURG, FL 33701

R. K. HOWARD  
DEPT. OF ZOOLOGY  
UNIV. OF MELBOURNE  
PARKVILLE  
VICTORIA 3052, AUSTRALIA

ALBERTO HUBERMAN  
INST. NAC. NUTR., S. ZUBIRAN  
VASCO DE QUIROGA NO. 15  
14000 MEXICO D.F.  
MEXICO

R. HULSEMANN  
BIOLOGISCHE ANSTALT HELGOLAND  
NOTKSTR. 31  
2000 HAMBURG 52  
GERMANY (PRG)

A. G. HUMES  
BOSTON UNIV. MARINE PROGRAM  
MARINE BIOLOGICAL LAB.  
WOODS HOLE, MA 02543

JAY V. HUNER  
1144 RUE CROZAT  
BATON ROUGE, LA 70810

KENNETH C. HUNTER  
DEPT. OF BIOLOGY  
SOUTHWESTERN COLLEGE  
WINFIELD, KS 07156

PAUL L. ILLG  
DEPT. OF ZOOLOGY, NJ-15  
UNIVERSITY OF WASHINGTON  
SEATTLE, WA 98195

CYNTHIA INNES  
441-B W 4TH STREET  
HATTIESBURG, MS 39401

MICHAEL JOHN ISAAC  
ZOOLOGY DEPARTMENT  
UNIV. COLLEGE OF SWANSEA  
SINGLETON PARK, SWANSEA  
SA2 8PP UNITED KINGDOM

HARUHIKO ITAGAKI  
DEPT. OF ZOOLOGY  
DUKE UNIVERSITY  
DURHAM, NC 27706

BORIS G. IVANOV  
MINISTRY OF PUBLIC WORKS  
DEPT. OF AGRICULTURE, FISH, DIV.  
P.O. BOX 8  
KUWAIT

ERNEST W. IVERSON  
DEPT. OF BIOLOGICAL SCIENCES  
UNIV. OF SO. CALIFORNIA  
LOS ANGELES, CA 90007

MOTONAGA IWAI  
INSTITUTO OCEAN.-USP  
CIDADE UNIVERSITARIA-DUTANTA  
CEP 05508 - SAO PAULO  
BRAZIL

MIGUEL A. IZAGUIRRE  
CINVESTAV-IPN-UNIDAD MERIDA  
APDO POSTAL 1249-A, SANTIAGO  
MERIDA, YUCATAN  
MEXICO

CHARLES A. JACOBY  
HARBOR BRANCH FOUNDATION  
RR #1, BOX 196  
FORT PIERCE, FL 33450

CARLOS G. JARA  
INSTITUTO DE ZOOLOGIA  
CASILLA 567  
VALDIVIA  
CHILE

WILLIAM B. JEFFRIES  
BIOLOGY DEPARTMENT  
DICKINSON COLLEGE  
CARLISLE, PA 17013

RAYMOND P. JEZERINAC  
THE OHIO STATE UNIVERSITY  
UNIVERSITY DRIVE  
NEWARK, OH 43055

CLIFFORD JOHNSON  
DEPT. OF ZOOLOGY  
UNIVERSITY OF FLORIDA  
GAINESVILLE, FL 32611

MALCOLM B. JONES  
DEPT. OF ZOOLOGY  
UNIVERSITY OF CANTERBURY  
PRIVATE BAG  
CHRISTCHURCH, NEW ZEALAND

JEAN JUST  
ZOOLOGICA MUSEUM  
UNIVERSITETSPARKEN  
DK 2100 COPENHAGEN  
DENMARK

KEN-ICHIRO KAIKAKA  
NOMO MARINE STATION  
NAGASAKI UNIVERSITY  
NOMOZAKI CHO, NAGASAKI-KEN  
851-05 JAPAN

THERESA E. KARDOS  
INSTITUTE OF ANIMAL BEHAVIOR  
101 WARREN STREET  
NEWARK, NJ 07102

J. DIRK KAVANAUGH  
100 RIVER ROAD, APT. F  
LAFAYETTE, LA 70501

MICHAEL T. KEARNEY  
DEPT. OF ZOOLOG. & PHYSIOLOGY  
LOUISIANA STATE UNIVERSITY  
BATON ROUGE, LA 70803

KATHLEEN IRWIN KEATING  
6 WEBB COURT  
PARK RIDGE, NJ 07656

CLIFFORD H. KELLER  
SCRIPPS INSTITUTION  
OF OCEANOGRAPHY A-008  
LA JOLLA, CA 92093

FRANK S. KENNEDY, JR.  
FLORIDA DEPT. OF NATURAL RES.  
100 EIGHTH AVE. SE  
ST. PETERSBURG, FL 33701

BRIAN KENSLEY  
IZ NHB W323  
SMITHSONIAN INSTITUTION  
WASHINGTON, D. C. 20560

CATHARINE G. KESSLER  
INVERTEBRATES  
MUS. OF COMPARATIVE ZOOLOGY  
HARVARD UNIVERSITY  
CAMBRIDGE, MA 02138

KAREN KEYS  
1337 SHATTUCK AVENUE  
BERKELEY, CA 94709

HOON SOO KIM  
DEPARTMENT OF ZOOLOGY  
COLL. OF NATURAL SCIENCES  
SEOUL NATIONAL UNIVERSITY  
SEOUL 151, KOREA

WON KIM  
342-4 PENNELL CIRCLE  
TALLAHASSEE, FL 32304

JACK L. KINDINGER  
6017 IDYLWOOD  
CORPUS CHRISTI, TX 78412

DAVID H. KHOTT  
MARINE RESOURCES RES. INST.  
P. O. BOX 12559  
CHARLESTON, SC 29412

ROBERT E. KNOWLTON  
DEPT. OF BIOL. SCIENCES  
THE GEORGE WASHINGTON UNIV.  
WASHINGTON, D. C. 20052

YATSUSUZUKA KO  
USA MARINE BIOL. INSTITUTE  
USA-INOSHIRI  
781-04 TOSA  
JAPAN

HELMUT KOCH  
ARCTIC RESEARCH LAB. ES 429  
WESTERN WASHINGTON UNIVERSITY  
BELLINGHAM, WA 98225

CLIFFORD ANDREW KOLDA  
DEPT. OF BIOLOGY - J526  
CITY COLLEGE OF C.U.N.Y.  
CONVENT AVE. AT 138TH ST.  
NEW YORK, NY 10031

JANE MARIE KOLEBA  
2045 HILLS ROAD  
SIDNEY, B.C. V8L 3S1  
CANADA

L. S. KORNICKER  
IZ NHB W323  
SMITHSONIAN INSTITUTION  
WASHINGTON, DC 20560

GEORGE KOUMANOS  
3 SHELBY COURT  
EAST NORTHPORT, NY 11731

CHARLES T. KREBS  
MARINE SCIENCE LAB  
P O BOX 114  
QUEENSLIFF, VICTORIA  
3255 AUSTRALIA

ROY K. KROPP  
DEPT. OF ZOOLOGY  
UNIVERSITY OF MARYLAND  
COLLEGE PARK, MD 20742

DONALD A. KRUEGER  
DEPT. OF ZOOLOGY  
UNIVERSITY OF WISCONSIN  
MADISON, WI 53706

LOIS G. KRUSCHWITZ  
2190 BLUEBELL  
BOULDER, CO 80302

EARL E. KRYGIER  
ALASKA TROLLERS ASSN.  
205 N. FRANKLIN STREET  
JUNEAU, AK 99801

HELMUT KUKERT  
BORCHERSHOP 15  
2800 BREMEN 65  
WEST GERMANY

JANET C. KUNZE  
MARINE BIOL. RES. DIV.A-002  
SCRIPPS INST. OF OCEANOGRAPHY  
UNIVERSITY OF CALIFORNIA  
LA JOLLA, CA 92093

HIROSHI KURATA  
TOHOKU-KU SUISAN KENKYUSHO  
27-5, SHINHAMA-CHO 3  
SHIOGAMA, HIYAGI KEN 985  
JAPAN

ARMAND H. KURIS  
DEPT. OF BIOL. SCIENCE  
UNIVERSITY OF CALIFORNIA  
SANTA BARBARA, CA 93106

GERALD KUTISH  
LIFE SCIENCES  
UNIVERSITY OF NEBRASKA  
LINCOLN, NE 68588

MATTHEW P. LANDAU  
DEPT. OF OCEANOGRAPHY  
FLORIDA INST. OF TECHNOLOGY  
MELBOURNE, FL 32901

ROGER L. LAINE  
KENT STATE UNIVERSITY  
ASHTABULA CAMPUS  
ASHTABULA, OH 44004

WILLIAM H. LANG  
NROCS OFFICE, SUITE 32-120  
26 FEDERAL PLAZA  
NEW YORK, NY 10278

LUIS L. LARES  
UNIVERSIDAD DE ORIENTE  
CUIANA  
VENEZUELA

COLIN J. LAU  
UNIV. OF HAWAII AT MANOA  
DEPARTMENT OF ZOOLOGY  
EDMONDSON HALL, 2538 THE MALL  
HONOLULU, HI 96822

DIANA R. LAUBITZ  
INVERTEBRATE ZOOLOGY DIVISION  
NATIONAL MUSEUM OF NAT. SCI.  
OPTAMA, ONTARIO K1A 0M8  
CANADA

ROGER LAUGHLIN G.  
FUNDACION CIENTIFICA LOS ROO.  
APARTADO NO. 1, CARMELITAS  
CARACAS 1010A  
VENEZUELA

ADDISON L. LAWRENCE  
TEXAS A&M UNIVERSITY  
P. O. DRAWER Q  
PORT ARANSAS, TX 78373

ERIC A. LAZO-WASEM  
3 CASTELO AVENUE  
SAN FRANCISCO, CA 94132

DALE F. LEAVITT  
ESL-WHOI  
WOODS HOLE, MA 02543

KENNETH H. LEBER  
DEPT. OF BIOLOGICAL SCIENCES  
FLORIDA STATE UNIVERSITY  
TALLAHASSEE, FL 32306

SARA E. LECROY  
P. O. BOX 974  
JENSEN BEACH, FL 33457

BYUNG DOH LEE  
NAT. FISHERIES UNIV. OF BUSAN  
NAMGU, BUSAN 601-01  
KOREA

PHILLIP GRANT LEE  
P. O. DRAWER Q  
PORT ARANSAS, TX 78373

A. THOMAS LEGGETT, JR.  
VA. INST. OF MARINE SCIENCE  
GLOUCESTER POINT, VA 23062

RAFAEL LEMAITRE  
9721 SW 14A AVENUE  
MIAMI, FL 33196

STEPHEN LEHAY  
P. O. BOX AA 769  
EVANSTON, IL 60204

CH. LEWINSOHN  
DEPT. OF ZOOLOGY  
TEL-AVIV UNIVERSITY  
RAMAT-AVIV  
TEL-AVIV, ISRAEL

JULIAN J. LEWIS  
DEPT. OF BIOLOGY  
UNIVERSITY OF LOUISVILLE  
LOUISVILLE, KY 40208

ROGER J. LINCOLN  
DEPT. OF ZOOLOGY  
BRITISH MUS. OF NAT. HISTORY  
CROWHILL ROAD  
LONDON SW7 5BD, ENGLAND

EDWARD J. LITTLE  
P.O. BOX 404  
KEY WEST, FL 33040

JUI-JU LIU  
INSTITUTE OF OCEANOLOGY  
ACADEMIA SINICA  
NAN-HAI RD. 7, TSINGTAO  
PEOPLES REP. OF CHINA

GLENN LONGLEY  
BOX 47  
EDWARDS AQUIFER RES. CENTER  
SW TEXAS STATE UNIVERSITY  
SAN MARCOS, TX 78666

JAMES G. LORHAN  
516 WINGRA STREET  
MADISON, WI 53715

L. H. A. E.-H. LOUREIRO  
LABORATORIO DE ZOOLOGIA  
UNIVERSIDADE DE BRASILIA  
BRASILIA, D.F. 70910  
BRAZIL

JAMES K. LOURY  
P. O. BOX A285  
SYDNEY 2000  
AUSTRALIA

CHARLES H. LUTZ  
9454 JOHNSON ROAD  
MOBILE, AL 36609

WILLIAM G. LYONS  
FLORIDA DEPT. OF NAT. RES.  
MARINE RESEARCH LAB.  
100 EIGHTH AVE., S.E.  
ST. PETERSBURG, FL 33701

D. C. MACLELLAN  
306 UNIVERSITY AVENUE  
FREDERICTON, N. B.  
CANADA E2B 4J1

ALESANDRO H. MAEDA  
RIO DANUBIO #436  
COLONIA NAVARRO  
TORREON COAHUILA  
MEXICO

MARA PANTOJA MAGALHAES  
R. PADRE MARIO VERSE  
NO. 232, ANCHIETA  
RIO DE JANEIRO  
BRASIL

PAUL C. HAGARELLI, JR.  
SIGMA COY  
8100 PRESIDENTS DRIVE  
ORLANDO, FL 32809

GUY MAGNIEZ  
UNIVERSITE DE DIJON  
BIOLOGIE ANIMALE ET GENERALE  
6, BD. GABRIEL  
21100 DIJON, FRANCE

JOHN J. MAGNUSON  
LABORATORY OF LIMNOLOGY  
UNIV. OF WISCONSIN, MADISON  
MADISON, WI 53706

YASUHIKO HAIHARA  
MARINE SCIENCE MUSEUM  
TOKAI UNIVERSITY  
2389 HHO SHIIZU  
424 JAPAN

R. R. HAKAROV  
VNIRO  
17A, KRASNOSLELSKAJA  
MOSCOW 107140  
U.S.S.R.

SPENCER R. MALECHA  
FISH AND AQUACULTURE PROGRAM  
AVENUE FISHERIES RES. CTR.  
AREA 4, SAND ISLAND  
HONOLULU, HI 96819

AUGUSTUS MAMARIL  
DEPT. OF BIOLOGICAL SCI.  
MISSISSIPPI STATE UNIV.  
MISSISSIPPI STATE, MS 39782

R. B. MANNING 202-357-  
IZ NRB W323  
SMITHSONIAN INSTITUTION 2506  
WASHINGTON, DC 20560

FERNANDO A. MANRIQUE  
SCH. OF MARINE SCIENCES  
APO 484  
GUAYMAS, SONORA  
MEXICO

LINDA H. MANTEL  
DEPARTMENT OF BIOLOGY  
CITY COLLEGE  
NEW YORK, NEW YORK 10031

BRIAN M. MARCOTTE  
MARINE SCIENCES CENTRE  
MCGILL UNIVERSITY  
3620 UNIVERSITY STREET  
MONTREAL, QUE., CANADA H3A 2B2

I. E. MARIOGHAE  
NIGERIAN INST. FOR OCEAN.  
AND MARINE RESEARCH  
P.M.B. 5122  
PORT HARCOURT, NIGERIA

ROBERT G. MARIS  
P. O. BOX 6322  
NORFOLK, VA 23508

JOHN C. MARKHAM  
ARCH CAPE MARINE LAB  
ARCH CAPE, OR 97102

MICHAEL J. MARSHALL  
ZOOLOGY DEPARTMENT  
UNIVERSITY OF FLORIDA  
GAINESVILLE, FL 32611

JOEL W. MARTIN  
DEPT. OF BIOLOGICAL SCIENCE  
FLORIDA STATE UNIVERSITY  
TALLAHASSEE, FL 32306

CARLOS A. P. MARTINEZ  
APO POSTAL 1249-A, SANTIAGO  
MERIDA, YUCATAN  
MEXICO

JAMES WALTER MASON  
3212 HIGHLAND DRIVE  
BIRMINGHAM, AL 35205

GEOFFREY A. MATTHEWS  
NOAA-NMFS LAB  
BLDG. 302-FT. CROCKETT  
GALVESTON, TX 77550

M. MELISSA MATTHEWS  
DEPT. OF BIOLOGY  
UNIV. OF SW LOUISIANA  
LAFAYETTE, LA 70504

ROBERT A. MATTSO  
DEPT. OF BIOLOGY  
UNIV. OF SOUTH FLORIDA  
TAMPA, FL 33620

PAUL MAUGLE  
323 GRADUATE VILLAGE  
KINGSTON, RI 02881

TOM MAUL  
P. O. BOX 98182  
TSMI SHA TSUI POST OFFICE  
KOWLOON, HONG KONG

ANDRE MAYRAT  
LAB. DE ZOOLOGIE DE L'E.N  
46 RUE D'IVIN  
75005 PARIS, FRANCE

BERNARD J. MCALICE  
IRA C. DARLING CENTER  
UNIVERSITY OF MAINE  
WALPOLE, ME 04573

CLARE D. MCBANE  
WOLFF HOUSE, I.N.E.R.  
UNIV. OF NEW HAMPSHIRE  
DURHAM, NH 03824

JOHN C. MCCAIN  
TETRA TECH, INC.  
1900 116TH AVE., NE  
BELLEVUE, WA 98004

JOHN R. MCCONAUGHA  
DEPT. OF OCEANOGRAPHY  
OLD DOMINION UNIVERSITY  
NORFOLK, VA 23508

ANNE B. MCCRARY  
DEPT. OF BIOLOGY  
UNIV. OF NORTH CAROLINA  
WILMINGTON, NC 28403

JOHN J. MCDERNOTT  
DEPT. OF BIOLOGY  
FRANKLIN & MARSHALL COLLEGE  
LANCASTER, PA 17604

JACK MCDONALD  
1640 SEAWAY DRIVE  
FORT PIERCE, FL 33450

THOMAS E. MCDONALD  
PACIFIC BIOLOGICAL STATION  
NANAIHO  
BRITISH COLUMBIA V9R 5K6  
CANADA

THOMAS R. MCDONNELL  
12200 MONTECITO RD. B-218  
SEAL BEACH, CA 90740

DAVID MCGRATH  
ZOOLOGY DEPARTMENT  
UNIVERSITY COLLEGE  
GALWAY  
IRELAND

KENNETH G. MCKENZIE  
SCHOOL OF APPLIED SCIENCE  
RIVERINA CAE  
P. O. BOX 588, WAGGA WAGGA  
N.S.W. 2650 AUSTRALIA

LARRY D. MCKINNEY  
TEXAS A&M UNIVERSITY  
BLDG. 311, FORT CROCKETT  
GALVESTON, TX 77550

PATSY A. MCLAUGHLIN  
BIOLOGICAL SCIENCES  
FLORIDA INTERNATIONAL UNIV.  
MIAMI, FL 33199

COLIN L. MCLAY  
ZOOLOGY DEPT.  
UNIVERSITY OF CANTERBURY  
CHRISTCHURCH  
NEW ZEALAND

RICHARD B. MCLEAN  
BUILDING 1505  
OAK RIDGE NATIONAL LAB.  
OAK RIDGE, TN 37830

JERRY A. MCLELLAND  
GULF COAST RES. LAB.  
EAST BEACH DRIVE  
OCEAN SPRINGS, MS 39564

EDWARD S. MCSWEENEY  
AQUACULTURE DC-10  
MEYERHAEUSER CO.  
TACOMA, WA 98477

MATILDE MENDEZ G.  
INSTITUTE DEL MAR  
DEL PERU  
P. O. BOX 22, CALLAO  
LIMA, PERU

ROGELIO J. MENENDEZ  
940 W. BREVARD ST., APT. D21  
TALLAHASSEE, FL 32304

NEIL A. MERCANDO  
PENNSYLVANIA STATE UNIV.  
OGONTZ CAMPUS  
1600 WOODLAND ROAD  
ABINGTON, PA 19001

CHARLES G. HESSING  
P. O. BOX 249118  
182 COX SCI. BLDG.  
UNIVERSITY OF MIAMI  
CORAL GABLES, FL 33124

JAMES T. MICHAELS, II  
6904 MARATEE AVE., W.  
APT. 79-C  
BRADENTON, FL 33529

WOLFGANG H. MIELKE  
II. ZOOL. INSTITUT  
BERLINER STR. 28  
D-3400 GOTTINGEN  
H. GERMANY

CHARLES B. MILLER  
SCHOOL OF OCEANOGRAPHY  
OREGON STATE UNIVERSITY  
CORVALLIS, OR 97331

DOUGLAS C. MILLER  
DEPT. OCEANOGRAPHY, WB-10  
UNIV. OF WASHINGTON  
SEATTLE, WA 98195

GEORGE C. MILLER  
16140 SW 108TH COURT  
MIAMI, FL 33157

ROBERT E. MILLER  
P. O. BOX 775  
CAMBRIDGE, MD 21613

BRIAN J. MILLS  
FISHERIES RESEARCH BRANCH  
GPO BOX 1625  
ADELAIDE 5001  
AUSTRALIA

THOMAS J. MINELLO  
NOAA/NMFS  
4700 AVENUE U  
GALVESTON, TX 77550

YASUHIKO MIYA  
INSTITUTE OF BIOLOGY  
NAGASAKI UNIVERSITY  
1-14, BUNKYO-MACHI  
NAGASAKI, JAPAN 852

RICHARD P. MODLIN  
DEPT. OF BIOLOGY  
UNIV. OF AL. IN HUNTSVILLE  
P. O. BOX 1247  
HUNTSVILLE, AL 35899

WALTER T. MONOT  
DEPARTMENT OF BIOLOGY  
LAKEHEAD UNIVERSITY  
THUNDER BAY, ONTARIO P7B 5E1  
CANADA

PAUL A. MONTAGNA  
BARUCH INSTITUTE  
UNIV. OF SOUTH CAROLINA  
COLUMBIA, SC 29208

PETER GEOFFREY MOORE  
UNIV. MAR. BIOL. STAT  
HILLPORT, ISLE OF CUHBRAE  
SCOTLAND, KA28 0EG  
U. K.

MOHAMMAD KASIM MOOSA  
LEMBAGA OSEANOLOGI NASIONAL  
P. O. BOX 580 DAK  
JAKARTA, INDONESIA

MARIA HORAITOU-APOSTOLOPOULOU  
ZOOLOGICAL LABORATORY  
UNIVERSITY OF ATHENS  
ATHENS 621  
GREECE

HELEN M. MOALES  
1403 PACIFIC DRIVE  
DARTMOUTH, CA 95616

STEVEN G. MORGAN  
DUK. UNIV. MARINE LAB  
RIVERS ISLAND  
DEAFPORT, NC 28516

TERRANCE D. MORIN  
1054 GREEN STREET  
SUITE 003  
HONOLULU, HI 96822

DAVID W. MORTON  
ZOOLOGY DEPARTMENT  
MONASH UNIVERSITY  
CLAYTON, VICTORIA  
AUSTRALIA 3168

PAL MULLER  
KAPLAR U. 11  
H-1024 BUDAPEST  
HUNGARY

RICHARD E. MULLSTAY  
BIOLOGY DEPARTMENT  
DELAWARE VALLEY COLLEGE  
DOYLESTOWN, PA 18901

ALAN A. MYERS  
DEPT. OF ZOOLOGY  
UNIVERSITY COLLEGE  
LEE HALLINGS, PROSPECT ROW  
CORK, IRE

DONALD L. MYKLES  
BIOLOGY DIVISION, P.O. BOX Y  
OAK RIDGE NATIONAL LAB.  
OAK RIDGE, TN 37830

CLAUDE M. NAGANINE  
MEMORIAL SLOANE  
KETERING CANCER CENTER  
1275 YORK AVENUE  
NEW YORK, NY 10021

P. NAIYANETR  
FACULTY OF SCIENCE  
CHUL. LONGKORN UNIVERSITY  
PHYA THAI ROAD  
BANGKOK 5, THAILAND

YUKIO NAKASONE  
BIOLOGICAL LABORATORY  
COLLEGE OF EDUCATION  
UNIVERSITY OF THE RYUKYUS  
OKINAWA, JAPAN

ILEANA NEGOESCU  
MUZ. DE ISTORIE NATURALA  
"GRIGORE ANTIPA"  
SOS. KISELEFF 1  
71268 BUCHAREST, RUMANIA

WILLIAM A. NEWMAN  
SCRIPPS INST. OF OCEAN. A-002  
LA JOLLA, CA 92093

WOLFRAM NOODT  
ZOOLOGISCHES INSTITUT DER  
UNIVERSITAT  
OLSHAUSENSTR. 40/60  
D-2300 KIEL, GERMANY (FRG)

ARNOLD W. NORDEN  
1 AUSTIN COURT  
COLLEGE PARK, MD 20740

DOROTHY J. NORRIS  
WOODWARD-CLYDE CONSULTANTS  
3489 KURTZ STREET  
SAN DIEGO, CA 92110

CARL F. NYELADE  
FRIDAY HARBOR LABORATORIES  
UNIV. OF WASHINGTON  
FRIDAY HARBOR, WA 98250

ARE NYLUND  
ZOOLOGICAL LABORATORY  
ALLEGT. 41  
N-5014 BERGEN  
NORWAY

PADRAC O'CEIDIGH  
ZOOLOGY DEPARTMENT  
UNIVERSITY COLLEGE  
GALWAY  
IRELAND

JAMES H. OAKDEN  
HOSS LANDING MARINE LAB  
P. O. BOX 223  
HOSS LANDING, CA 95039

TOSHIHITSU ODAWARA  
ODAWARA CARCINOLOGICAL MUSEUM  
POST CODE 106  
AZABU-JUBAN 3-11  
MINATOKU, TOKYO, JAPAN

STEVEN H. ODEN  
2920 CHAPEL HILL RD., #35-B  
DURHAM, NC 27707

DAVID P. OETINGER  
DEPT. OF BIOLOGY  
HOUGHTON COLLEGE  
HOUGHTON, NY 14744

JANE W. OJEDA  
P. O. BOX 484  
GUAYMA, SON.  
MEXICO

STEINAR OKLAND  
ZOOLOGICAL LABORATORY  
UNIVERSITY OF BERGEN  
ALLEGT. 41  
5000 BERGEN, NORWAY

PAUL E. ONHOLT  
DAUPHIN ISLAND SEA LAB.  
P. O. BOX 369-370  
DAUPHIN ISLAND, AL 36528

TAKASHI ONBE  
LAB. MAR. BIOL., FAC. APPL. BIOL.  
SCIENCE, HIROSHIMA UNIVERSITY  
2-17 HIDORI-MACHI  
FUKUYAMA 720, JAPAN

FABIO TORRES ONTIVEROS  
JUAREZ NO. 135  
TLAQUEPAQUE, JAL.  
MEXICO

SHIGAKO OISHI  
FACULTY OF FISHERIES  
MIE UNIVERSITY  
2-80 EDOBASHI  
MIE-KEN, JAPAN 514

DEBORAH S. ORZACK  
NELSON LABS  
RUTGERS UNIVERSITY  
NEW BRUNSWICK, NJ 08904

PHILIP E. OSHEL  
DEPT. OF BIOL., MEMORIAL UNIV.  
ST. JOHN'S  
NEWFOUNDLAND A1B 3X9  
CANADA

DAVID S. OSMOND  
GARTNER LEE ASSOC. LTD.  
TORONTO-BUTTONVILLE AIRPORT  
MARKHAM, ONTARIO L3P 3J9  
CANADA

MARIA CRISTINA OSTROVSKI  
DEPARTAMENTO DE ZOOLOGIA  
INST. DE BIOLOGIA, UFPR  
CIDADE UNIVERSITARIA, BLOC A  
21940, RIO DE JANEIRO, BRASIL

LARRY M. PAGE  
ILLINOIS NAT. HIST. SURVEY  
URBANA, IL 61801

MARK PAGE  
DEPT. OF BIOLOGICAL SCIENCES  
UNIVERSITY OF CALIFORNIA  
SANTA BARBARA, CA 93106

ROBERT PAGEL  
5 S. GRAND AVENUE  
DEERFIELD, WI 53531

MARGARET A. PALMER  
BARUCH INST. FOR MAR. BIOLOGY  
UNIV. OF SOUTH CAROLINA  
COLUMBIA, SC 29208

TAISOO PARK  
DEPT. OF MARINE BIOLOGY  
TEXAS A & M UNIVERSITY  
GALVESTON, TX 77550

NATALIE G. PASCOE  
BOSTON UNIV. MARINE PROGRAM  
MARINE BIOLOGICAL LABORATORY  
WOODS HOLE, MA 02543

JOHN D. PASTO  
DEPARTMENT OF BIOLOGY  
MIDDLE GEORGIA COLLEGE  
COCHRAN, GA 31014

V. H. PASZTOR  
DEPT. OF BIOL., MCGILL UNIV.  
1205 DR. PENFIELD AVE.  
MONTREAL H3A 1B1  
CANADA

WENDELL K. PATTON  
DEPARTMENT OF ZOOLOGY  
OHIO WESLEYAN UNIVERSITY  
DELAWARE, OH 43015

A. J. PAUL  
SEWARD MARINE STATION  
BOX 617  
SEWARD, AK 99664

JAMES F. PAYNE  
DEPT. OF BIOLOGY  
MEMPHIS STATE UNIVERSITY  
MEMPHIS, TN 38152

WALTER H. PEARSON  
BATTELLE MARINE RESEARCH LAB  
3588 WASHINGTON HARBOR ROAD  
SEQUIM, WA 98382

ANN E. PENROCK  
C/O BOJKO  
RFD #1 N. RIVER RD.  
EPPING, NH 03042

ROBERT W. PENNAK  
EPO BIOLOGY  
CAIPIUS BOX 334  
UNIVERSITY OF COLORADO  
BOULDER, CO 80309

DEBORAH L. PENRY  
VIRGINIA INST. OF MAR. SCI.  
GLOUCESTER POINT, VA 23062

LINDA H. PEQUEGHAT  
BOX 2848  
COLLEGE STATION, TX 77841

RICHARD W. PERALTA  
924 ARNFIELD CIRCLE #203  
NORFOLK, VA 23508

FOSCA P. PEREIRA LEITE  
INSTITUTO OCEANOGRÁFICO-USP  
CIDADE UNIVERSITÁRIA-BUTANTÁ  
CEP 05508 - SAO PAULO  
BRAZIL

GUIDO PEREIRA  
INSTITUTO DE ZOOLOGIA TROPICAL  
APTDO. 47058  
CARACAS 1041  
VENEZUELA

ISABEL C. PEREZ FARFANTE  
NATIONAL MARINE FISH. SERVICE  
SYSTEMATIC CENTER  
NATIONAL MUSEUM OF NAT. HIST.  
WASHINGTON, D. C. 20560

PENNY SUE PERKINS  
UCLA, DEPT. OF ANATOMY  
SCHOOL OF MEDICINE, CHS  
LOS ANGELES, CA 90024

DIANE M. PERRY  
DEPT. OF BIOLOGICAL SCIENCES  
UNIV. OF SO. CALIFORNIA  
LOS ANGELES, CA 90007

GARY A. PETIT  
1208 ROYAL PALM DRIVE  
NAPLES, FL 33940

STEPHEN M. PETRICH  
CONSULTANT IN MARINE BIOLOGY  
4728 SUNFIELD AVENUE  
LONG BEACH, CA 90808

H. ELIZABETH PETTY  
DEPT. OF BIOLOGICAL SCIENCES  
124 LIFE SCIENCES BUILDING  
UNIV. OF SOUTH ALABAMA  
MOBILE, AL 36688

CHARLES A. PHILLIPS  
HYPERION TREATMENT PLANT  
12000 VISTA DEL MAR  
PLAYA DEL REY, CA 90291

NEAL W. PHILLIPS  
SKIDAWAY INSTITUTE OF OCEAN.  
UNIV. SYSTEM OF GA  
P. O. BOX 13687  
SAVANNAH, GA 31406

JOSEPH F. PICKETT, SR.  
RD 3, BURDEN LAKE ROAD  
AVERILL PARK, NY 12016

IVO POGLAYEN  
DIRECTOR  
REID PARK 200  
900 S. RANDOLPH WAY  
TUCSON, AZ 85716

LIBERTA S. POOLT  
200 JEFFREY LAKE  
PORT PIERCE, FL 33450

GARY C. D. POORE  
CURATOR OF CRUSTACEA  
NATIONAL MUSEUM OF VICTORIA  
71 VICTORIA CRESCENT  
AERBOTSFORD, VIC 3067 AUSTRALIA

MARTIN H. POSEY  
DEPT. OF BIOLOGY  
UNIVERSITY OF OREGON  
EUGENE, OR 97403

C. B. POWELL  
UNIV. OF PORT HARCOURT  
SCH. OF BIOLOGICAL SCIENCES  
P.H.B. 5323  
PORT HARCOURT, NIGERIA

LAURENCE H. POWERS  
109 SO. SNOW ROAD  
SEBIEZ, AL 36575

CHARLES L. PREGENZER  
ZOOLOGY, UNIV. OF SO. WALES  
P. O. BOX 1  
KENSINGTON, NSW 2033  
AUSTRALIA

NIGEL P. PRESTON  
DEPT. OF ZOOLOGY  
UNIVERSITY OF SYDNEY  
SYDNEY N.S.W. 2006  
AUSTRALIA

GERHARD PRETZMANN  
NATURHISTORISCHES MUSEUM  
BURGRING 7  
1014 WIEN  
AUSTRIA

BRADFORD H. PRICE  
15 W 664 59TH ST., APT. 16  
HINSDALE, IL 60521

JAMES O. PRICE  
DEPARTMENT OF BIOLOGY  
MEMPHIS STATE UNIVERSITY  
MEMPHIS, TN 38152

WAYNE PRICE  
DIV. OF SCIENCE AND MATH.  
UNIVERSITY OF TAMPA  
TAMPA, FL 33606

ANTHONY J. PROVENZANO, JR.  
DEPT. OF OCEANOGRAPHY  
OLD DOMINION UNIVERSITY  
NORFOLK, VA 23508

KUANG PU-REN  
KUNMING INSTITUTE OF ZOOLOGY  
KUNMING, YUNNAN  
PEOPLE'S REPUBLIC OF CHINA

JEAN R. PUGH  
RT. 1, BOX 141  
HAYES, VA 23072

L. SCOTT QUACKENBUSH  
DEPT. OF BIOL. SCI., UNIT 1  
FLORIDA STATE UNIVERSITY  
TALLAHASSEE, FL 32304

JOE QUEK  
MARINE FEED (S) PTE. LTD.  
12, JALAN KILANG BARAT  
SINGAPORE 0315

NANCY N. RABALAI  
UNIVERSITY OF TEXAS  
MARINE SCIENCE INSTITUTE  
PORT ARANSAS MARINE LAB.  
PORT ARANSAS, TX 78373

FAHNIDA RAFI  
INVERTEBRATE ZOOLOGY  
NAT. MUSEUM OF NAT. SCIENCES  
2378 HOLLY LANE BUILDING  
OTTAWA, ONT., CANADA K1A 0M6

PABLO JOSE RAMIREZ  
UNIVERSIDAD DE ORIENTE  
NUCLEO DE NUEVA ESPARTA  
APARTADO 147 PORLAJAR  
NUEVA ESPARTA, VENEZUELA

K. RANGA RAO  
PROFESSOR OF BIOLOGY  
UNIVERSITY OF WEST FLORIDA  
PENSACOLA, FL 32504

GARY I. RAY  
123 WHITE DRIVE, APT. H4  
TALLAHASSEE, FL 32304

CLAUDE RAZOULS  
LABORATOIRE ARAGO  
66650 DANYULE SUR MER  
FRANCE

DEHISSE ARAUJO RE  
P. O. BOX 3559  
SAN YSIDRO, CA 92073

G. H. L. READ  
ZOOLOGY DEPARTMENT  
RHODES UNIVERSITY  
GRAHAMSTOWN 6140  
SOUTH AFRICA

KENNETH A. L. READING  
11 COLBOURNE STREET  
THORNHILL, ONTARIO  
CANADA L3T 1Z4

HARJORIE L. REAKA  
DEPARTMENT OF ZOOLOGY  
UNIVERSITY OF MARYLAND  
COLLEGE PARK, MD 20742

STEVE REEACH  
104 SOUTHWOOD TERRACE  
SALISBURY, MD 21801

HANCY REED  
ENVIR. QUALITY LAB. INC.  
1767 S. TAHITI DRIVE  
PORT CHARLOTTE IND. PARK  
PORT CHARLOTTE, FL 33952

ERNST S. REESE  
DEPARTMENT OF ZOOLOGY  
UNIVERSITY OF HAWAII  
HONOLULU, HI 96822

JANET W. REID  
USANRU-BRASILIA  
AMERICAN EMBASSY-BRASILIA  
APO HIAHI, FL 34030

DEB W. RIBELIN  
IMPERSIVE CULTURE SYS., INC.  
P. O. BOX 31  
SUNRIERLAND KEY, FL 33042

A. L. RICE  
INST. OF OCEANOGRAPHIC SCI.  
BROOK ROAD, WORNLEY  
GODALMING  
SURREY GU8 5UB, ENGLAND

ALISTAIR H. H. RICHARDSON  
DEPARTMENT OF ZOOLOGY  
UNIVERSITY OF TASMANIA  
BOX 252C, GPO HOBART  
TASMANIA 7001, AUSTRALIA

ELIEZER DE CARVALHO RIOS  
RUA LURZ LOREA 464/308  
96200 - RIO GRANDE (RS)  
BRASIL

RUBEN RIOS  
DEPTO. DE OCEANOGRAFIA  
C.I.C.E.S.S.E.  
P. O. BOX 4844  
SAN YSIDRO, CA 92073

LARRY S. ROBERTS  
DEPT. OF BIOLOGICAL SCIENCES  
TEXAS TECH UNIVERSITY  
BOX 4149  
LUBBOCK, TX 79409

TERRILL W. ROBERTS  
2721 DOWLING  
ORANGE, TX 77630

ANDREW ROBERTSON  
ONPA/NOAA  
RD/HP  
ROCKWALL BLDG., ROOM 320  
ROCKVILLE, MD 20852

BARBARA ROBERTSON  
INSTITUTO NACIONAL DE  
PERQUISAS DA AMAZONIA  
ESTRADA DO ALEXO, 1756  
BRASIL

J. ROY ROBERTSON  
THE UNIVERSITY OF GEORGIA  
MARINE INSTITUTE  
SAPELO ISLAND, GA 31327

DANIEL C. ROCCATAGLIATA  
GURRUCHAGA 1049 DTO "A"  
BUENOS AIRES (CAP. FED.) 1414  
ARGENTINA

CARLOS E. F. ROCHA  
INST. DE BIOCENCIAS - USP  
DEPTO. DE ZOOLOGIA - CP 20.520  
05508 SAO PAULO  
BRAZIL

RICHARD C. ROEBROUGH  
USL P.O. BOX 43835  
LAFAYETTE, LA 70504

GILBERTO RODRIGUEZ  
INST. VEN. DE INVESTIGACIONES  
CIENFIFICAS  
APARTADO 1627  
CARACAS, VENEZUELA

GUSTAVO A. RODRIGUEZ  
ROOSEVELT 313A  
NAZATLAN, SINALOA  
MEXICO

ROBERT D. ROER  
INST. FOR MAR. BIOMEDICAL RES.  
7205 WRIGHTSVILLE AVENUE  
WILMINGTON, NC 28403

H. D. IAN ROLFE  
HUNTERIAN MUSEUM, THE UNIV.  
GLASGOW G12 8QQ  
SCOTLAND

JAMES D. ROHEY  
110 PEES STREET (REAR)  
PLAYA DEL REY, CA 90291

ROBERT D. ROSE  
NEUROBIOLOGY & BEHAVIOR  
SUINY  
STONY BROOK, NY 11794

RUDOLPH A. ROSEN  
204 HOLIDAY HALL  
UNIV. OF MASSACHUSETTS  
AMHERST, MA 01003

SANDRO RUFFO  
MUSEO CIVICO DI ST. NATURALE  
LUNGODIGE PORTO VITTORIA  
9 - 37100 VERONA  
ITALY

EDWARD P. RYAN  
DEPARTMENT OF BIOLOGY  
EAST CAROLINA UNIVERSITY  
GREENVILLE, NC 27834

NICHELE DE SAINT LAURENT  
LAB. DE ZOOLOGIE (ARTHROPODES)  
MUSE. NAT. D'HISTOIRE NATURELLE  
61 RUE DE BUFFON  
75005 PARIS, FRANCE

S. C. DE SAINT-BRISSON  
LAB. PESQUISAS DA MARINHA  
ARRAIAL DO CABO (RJ)  
CEP 28.910  
BRAZIL

KATSUSHI SAKAI  
TOKUSHIMA BIOLOGICAL LAB.  
SHIKOKU WOMEN'S UNIVERSITY  
OHJINCHO-FURUKAWA  
771-11 TOKUSHIMA, JAPAN

TUNE SAKAI  
562 JYOHYOJI-HACHI  
KAMAKURA, KANAGAWA-KEN  
JAPAN

VICTOR MANUEL SALCEDA S.  
CENTRO DE INVESTIGACIONES Y DE  
ESTUDIOS AVANZADOS DEL IPN  
APARTADO POST. 1249 A SANTIAGO  
97000 MÉRIDA, YUC., MEXICO

MICHAEL SALMON  
DEPT. OF ECOL., ETH. & EVOL.  
UNIVERSITY OF ILLINOIS  
VIVARIUM BUILDING  
CHAMPAIGN, IL 61820

OSVALDO PINTO SALOIHU  
RUA TIRADENTES - NO. 200  
1001 - INGA-NITEROI  
RIO DE JANEIRO  
BRASIL CEP 24210

BRENDA M. SANDERS  
DUKE MARINE LAB  
RIVERS ISLAND  
BEAUFORT, NC 28516

PAUL A. SANDIFER  
MARINE RESOURCES RES. INST.  
P. O. BOX 12559  
CHARLESTON, SC 29412

PAULA SANDLER  
BOX 5076  
DUKE STATION  
DURHAM, NC 27706

GORDON A. SANFORD, JR.  
COMMERCIAL MARICULTURES INT.  
P. O. BOX 81593  
SAN DIEGO, CA 92138

GEORGE J. SANTA CRUZ, III  
G-WER-2TPIZ  
USCC HQ  
WASHINGTON, D. C. 20593

EUCLYDES A. DOS SANTOS P.  
DEPTO. CIENCIAS FISIOLOG. - FURG  
C.P. 474, RIO GRANDE RS 96 200  
BRAZIL

FRANCISCO SARDA  
INST. DE INVESTIGACIONES PES.  
PASEO NACIONAL, S/N  
BARCELONA 3  
SPAIN

CLAY A. SASSAMAN  
DEPT. OF BIOLOGY  
UNIVERSITY OF CALIFORNIA  
RIVERSIDE, CA 92521

JAMES F. SAUNDERS  
E. P. O. BIOLOGY  
UNIVERSITY OF COLORADO  
BOULDER, CO 80309

FELICITA SCAPINI  
ISTITUTO DI ZOOLOGIA  
VIA ROMANO, 17  
50125 FIRENZE  
ITALY

MARCELO A. SCELZO  
CENTRO DE INVEST. CIENTIFICAS  
APARTADO POSTAL 321  
FORLAMAR 6301  
ISLA MARGARITA, VENEZUELA

LINDA C. SCHAFFNER  
VIRGINIA INST. OF MAR. SCI.  
GLOUCESTER POINT, VA 23062

RANDALL M. SCHIETZELT  
DEPT. OF BIOLOGY, BOX 42451  
UNIV. OF SW LOUISIANA  
LAFAYETTE, LA 70504

HORST KURT SCHMINKE  
FACHBEREICH IV  
UNIVERSITÄT OLDENBURG  
POSTFACH 2503  
D-2900 OLDENBURG, GERMANY (FRG)

EUGENE H. SCHMITZ  
DEPT. OF ZOOLOGY, SE 632  
UNIVERSITY OF ARKANSAS  
FAYETTEVILLE, AR 72701

MICHAEL T. SCHOERDORF  
8235 FIELDING LANE  
GREENDALE, WI 53129

FREDERICK R. SCHRAM  
P. O. BOX 1390  
SAN DIEGO, CA 92112

ERIC T. SCHREIBER  
PLANT SCI. DIV., ENT. SECTION  
THE UNIVERSITY OF WYOMING  
P. O. BOX 3354, UNIV. STATION  
LARAMIE, WY 82071

GEORGE A. SCHULTZ  
15 SMITH STREET  
HAMPTON, NJ 08827

ERIK PAUL SCULLY  
DEPT. OF BIOL. SCIENCES  
TOWSON STATE UNIVERSITY  
TOWSON, MD 21204

SYLVIE SECRETAN  
INST. DE PALEONTOLOGIE  
DU MUSEUM NAT. D'HISTOIRE  
NATURELLE, 8 RUE DE BUFFON  
75005 PARIS, FRANCE

DIETRICH SEDLMEIER  
INSTITUT FÜR ZOOHYDROLOGIE  
ENDENICHER ALLEE M-13  
D-5300 BONN, GERMANY (DDR)

WALLACE F. SEED  
DEPT. OF APPLIED BIOLOGY  
GPO BOX 2476  
MELBOURNE, VICTORIA, 3001  
AUSTRALIA

DANIEL W. SELL  
GREAT LAKES RESEARCH DIVISION  
UNIVERSITY OF MICHIGAN  
ANN ARBOR, MI 48109

JOHN J. SHADLE  
DEPT. OF FOR., FISH. & WILD.  
UNIV. OF NEBRASKA-LINCOLN  
202 NAT. RES. HALL  
LINCOLN, NE 68583

D. PATRICK SHAW  
#306 - 3255 QUADRA STREET  
VICTORIA, B. C. V8X 1G4  
CANADA

J. KEVIN SHAW  
7621 RED ARROW ROAD  
MOBILE, AL 36609

JOHN G. SHIBER  
C/O 35 GLENDOM ROAD  
NEEDHAM, MA 02192

ROBERT J. SHIELDS  
DEPARTMENT OF BIOLOGY  
THE CITY COLLEGE  
CONVENT AVE. AT 139TH ST.  
NEW YORK, NY 10031

CHANG-TAI SHIH  
NATIONAL MUSEUMS OF CANADA  
OTTAWA, ONTARIO K1A 0H8  
CANADA

THOMAS C. SHIRLEY  
DEPT. OF ZOOLOGY  
LOUISIANA STATE UNIVERSITY  
BATON ROUGE, LA 70803

ROBERT A. SHLESER  
OCEANIC INSTITUTE  
HAKAPUU POINT  
WAIHANA, HI 96795

ERIC SHULENBERGER  
SAN DIEGO NAT. HISTORY MUS.  
P. O. BOX 1390  
SAN DIEGO, CA 92112

JURGEN SIEG  
UNIVERSITÄT OSNABRUECK  
ABT. VECHTA/DRIVERSTR. 22  
2846 VECHTA  
W. GERMANY

PAUL R. SIEGEL  
MARINE SCIENCES INSTITUTE  
UNIVERSITY OF CALIFORNIA  
SANTA BARBARA, CA 93106

DOUGLAS SIEGEL-CAUSEY  
DEPARTMENT OF ECOLOGY  
UNIVERSITY OF ARIZONA  
TUCSON, AZ 85721

JOSEPH L. SIMON  
DEPT. OF BIOLOGY  
UNIV. OF SOUTH FLORIDA  
TAMPA, FL 33620

STANLEY L. SISSON  
904 INDIANA  
SAN MARCOS, TX 78666

KATHLEEN SLATTERY  
325 WALKER VALLEY ROAD  
CASTROVILLE, CA 95012

SIDNEY S. SLOCUM  
807 JAMES DRIVE  
RICHARDSON, TX 75080

ALFRED E. SHALLEY  
DEPARTMENT OF BIOLOGY  
TULANE UNIVERSITY  
NEW ORLEANS, LA 70118

THOMAS L. SHALLEY  
DEPT. OF ZOOLOGY  
UNIVERSITY OF HAWAII  
2538 THE MALL  
HONOLULU, HI 96822

DAVID J. SHANIOTTO  
17309 70TH AVENUE  
TINLEY PARK, IL 60477

DOUGLAS G. SMITH  
DEPT. OF ZOOLOGY  
UNIVERSITY OF MASSACHUSETTS  
AMHERST, MA 01003

IAN R. SMITH  
NSW STATE FISHERIES  
PO BOX 1211, GROSVENOR ST.  
SYDNEY NSW 2000  
AUSTRALIA

M. KIMBERLY SMITH  
DEPT. OF ZOOLOGY  
UNIVERSITY OF CALIFORNIA  
BERKELEY, CA 94720

RICHARD E. SMITH  
DEPT. OF ZOOLOGY  
NOLAN HALL  
UNIV. OF WISCONSIN  
MADISON, WI 53706

STEVEN C. SMITH  
162 E. SIERRA MADRE BLVD.  
SIERRA MADRE, CA 91024

LESLIE J. SNIDER  
A-008  
UCSD-S10  
LA JOLLA, CA 92093

MICHEL SOLIGNAC  
LAB. DE GENETIQUE EVOLUTIVES  
CNRS  
91190 GIF-SUR-YVETTE  
FRANCE

TED R. SOHNER  
DIV. ENVIRONMENTAL STUDIES  
UNIV. OF CALIFORNIA AT DAVIS  
DAVIS, CA 95616

LUIS A. SOTO  
CENT. DE CIENC., MAR Y LIMNOL.  
UNAH  
APARTADO POSTAL 70-305  
MEXICO 20, D.F. 04510, MEXICO

HENRY R. SPIVEY  
DEPT. OF BIOLOGICAL SCIENCE  
FLORIDA STATE UNIVERSITY  
TALLAHASSEE, FL 32306

DANIEL G. SPOTTS  
RSHAS-BLR  
4600 RICKENBACKER CAUSEWAY  
MIAMI, FL 33149

HUBERT J. SQUIRES  
122 UNIVERSITY AVENUE  
ST. JOHN'S  
NEWFOUNDLAND  
CANADA A1B 1Z5

JON D. STANDING  
DUKE UNIV. MARINE LAB.  
BEAUFORT, NC 28516

DAVID H. STANSBERRY  
MUSEUM OF ZOOLOGY  
OHIO STATE UNIVERSITY  
1813 NORTH HIGH STREET  
COLUMBUS, OH 43210

CRAIG P. STAUDE  
FRIDAY HARBOR LABORATORIES  
UNIVERSITY OF WASHINGTON  
FRIDAY HARBOR, WA 98250

TIMOTHY D. STEBBINS  
HUMBOLDT STATE UNIVERSITY  
DEPT. OF BIOLOGY  
ARCATA, CA 95521

COLIN G. H. STEEL  
DEPT. OF BIOLOGY  
YORK UNIVERSITY  
DOWNSVIEW, ONTARIO  
CANADA M3J 1P3

V. J. STEELE  
BIOLOGY DEPARTMENT  
MEMORIAL UNIVERSITY  
ST. JOHN'S, NFLD. A1B 3X9  
CANADA

ATLE JOHAN STEINSLAND  
5659 HAGA SANNANGER  
NORWAY

JAN H. STOCK  
ZOOLOGICAL MUSEUM  
POSTBOX 20125  
1000 HC AMSTERDAM  
THE NETHERLANDS

JOHN F. STORR  
BIOLOGY DIVISION  
659 HOCHSTETTER HALL  
SUNY/BUFFALO  
BUFFALO, NY 14260

GAIL STRATTON  
DEPT. BIOLOGICAL SCIENCES  
UNIVERSITY OF CINCINNATI  
CINCINNATI, OH 45221

NED E. STRENTN  
DEPT. OF BIOLOGY  
ANGELO STATE UNIVERSITY  
SAN ANGELO, TX 76909

JARL-OVE STROMBERG  
KRISTINEBERG MAR. BIOL. STA.  
KRISTINEBERG 2130  
S-450 34 FISKEBACKSKIL  
SWEDEN

KENNETH C. STUCK  
GULF COAST RESEARCH LABORATORY  
OCEAN SPRINGS, MS 39564

STEPHEN D. SULKIN  
HORN POINT ENVIRON. LAB.  
BOX 775  
CAMBRIDGE, MD 21613

IAN SUTHERLAND  
INVERTEBRATE ZOOLOGY DIVISION  
NATIONAL MUSEUM OF NAT. SCI.  
OTTAWA, ONTARIO K1A 0H8  
CANADA

HIROSHI SUZUKI  
MANAZURU MAR. LAB. FOR  
SCIENCE EDUCATION, P.C. 259-02  
MANAZURU-HACHI,  
KANAGAWA PREF., JAPAN

HIROSHI SUZUKI  
AHAKUSA MARINE BIOL. LAB.  
KYUSHU UNIV., TOHIOKA 2231  
REIHOKU-CHO, KUNAMOTO PREF.  
863-25 JAPAN

JORUNDR SVAVARSSON  
KRISTINEBERG MAR. BIOL. STA.  
450 34 FISKEBACKSKIL  
SWEDEN

ROY SWAIN  
DEPT. OF ZOOLOGY  
UNIV. OF TASMANIA  
BOX 252C, G.P.O., HOBART  
TASMANIA, AUSTRALIA 7001

LEO W. H. TAN  
DEPARTMENT OF ZOOLOGY  
NAT. UNIV. OF SINGAPORE  
KENT RIDGE  
SINGAPORE 0511

AIRTON S. TARARAM  
INST. OCEANOGRÁFICO - USP  
CIDADE UNIVERSITÁRIA - BUTANTA  
CEP 05508 - SAO PAULO  
BRAZIL

PHILLIP R. TAYLOR  
DEPT. OF ECOL. & EVOL. BIOLOGY  
UNIV. OF CALIFORNIA, IRVINE  
IRVINE, CA 92717

ROBERT C. TAYLOR  
ZOOLOGY DEPARTMENT  
UNIVERSITY OF GEORGIA  
ATHENS, GA 30602

KRIS W. THOENKE  
ROCKERY BAY  
NAT'L ESTUARINE SANCTUARY  
10 SHELL ISLAND ROAD  
MAPLES, FL 33942

ROGER F. THOMA  
109 NORTH 21 STREET  
NEWARK, OH 43055

JAMES D. THOMAS  
NEWFOWL HARBOR MARINE INST.  
BIG PINE KEY, FL 33043

CATHERINE Q. THOMPSON  
BIOLOGY DEPARTMENT  
LEHIGH UNIVERSITY  
BETHLEHEM, PA 18015

ROGÈNE K. THOMPSON  
C/O CAMARONE HATCHERY CO. LTD.  
MON TRESOR MON DESERT, S.E.  
UNION VALE  
MAURITIUS (INDIAN OCEAN)

JAMES H. THORP, III  
SAVANNAH RIVER ECOL. LAB.  
P. O. DRAWER E  
AIKEN, SC 29801

MELINDA A. THUN  
11347 DULCET AVENUE  
NORTHBRIDGE, CA 91326

MICHAEL H. THURSTON  
INSTITUTE OF OCEAN. SCI.  
BROOK ROAD, WORMLEY,  
GODALMING  
SURREY GUB 5UB, U. K.

L. TIEFENBACHER  
ZOOLOGISCHE STAATSSAMMLUNG  
MARIA-HARD-STRASSE 18  
DM8000 MUNICH 19  
WEST GERMANY

ANN JANE TIERNEY  
DEPT. OF ZOOLOGY  
UNIVERSITY OF TORONTO  
TORONTO, ONTARIO M5S 1A1  
CANADA



ZINNTAE ZO.  
2709 S. COLFAX  
PLANO, TX 75075

NAIDA ZUCKER  
BIOLOGY  
BOX 3AF  
NEW MEXICO STATE UNIVERSITY  
LAS CRUCES, NM 88003

VICTOR A. ZULLO  
UNIV. OF NORTH CAROLINA  
WILMINGTON, NC 28403

## Domestic Institutional Subscribers as of March 1, 1982

AUKE BAY FISHERIES LAB. LIBRARY  
P.O. BOX 155  
AUKE BAY, AK 99321

W.F. THOMPSON MEMORIAL LIBRARY  
NATIONAL MARINE FISHERIES LAB.  
P.O. BOX 1638  
KODIAK, AK 99615

LIBRARY - INST. MARINE SCIENCES  
UNIVERSITY OF ALASKA  
IRVING 11 - ROOM 138  
FAIRBANKS, AK 99701

LIBRARY - MAR. ENV. SCIENCES  
CONSORTIUM-DAUPHIN IS. SEA LAB  
P.O. BOX 369-370  
DAUPHIN ISLAND, AL 36528

UNIVERSITY OF ARIZONA  
LIBRARY  
SERIALS DEPT.  
TUCSON, AZ 85721

LIBRARIAN, BODEGA MARINE LAB.  
P.O. BOX 247  
BODEGA BAY, CA 94923

MARINE TECH. INFO. CENTER  
CALIF. DEPT. OF FISH & GAME  
350 GOLDEN SHORE  
LONG BEACH, CA 90802

HOPKINS MARINE LAB.  
PACIFIC GROVE, CA 93950

MOSS LANDING MARINE LABS.  
LIBRARY  
P.O. BOX 223  
MOSS LANDING, CA 95039

NATURAL HISTORY MUSEUM  
SAN DIEGO SOC. FOR NAT. HIST.  
BOX 1390  
SAN DIEGO, CA 92112

LIBRARY  
NATIONAL MARINE FISHERIES SER.  
3150 PARADISE DRIVE  
TIBURON, CA 94920

RESOURCES AGENCY LIBRARY  
1416 - 9TH STREET  
ROOM 117  
SACRAMENTO, CA 95814

PERIODICALS/MICROFORMS LIBRARY  
MAIN LIBRARY  
SAN FRANCISCO STATE UNIVERSITY  
1620 HOLLOWAY AVENUE  
SAN FRANCISCO, CA 94132

LIBRARY  
SOUTHWEST FISHERIES CENTER  
P.O. BOX 271  
LA JOLLA, CA 92038

SERIALS DEPT. 01  
MAIN LIBRARY  
UNIVERSITY OF CALIFORNIA  
BERKELEY, CA 94720

ACQUISITIONS DEPT, LIBRARY  
UNIVERSITY OF CALIFORNIA  
DAVIS, CA 95616

BIO MEDICAL LIBRARY  
CENTER FOR HEALTH SERVICES  
UNIVERSITY OF CALIFORNIA  
LOS ANGELES, CA 90024

SIO LIBRARY C-075-C  
UNIVERSITY OF CALIFORNIA  
SAN DIEGO  
LA JOLLA, CA 92093

SERIALS SECTION  
UNIVERSITY LIBRARY  
UNIVERSITY OF CALIFORNIA  
SANTA CRUZ, CA 95060

KLINE SCIENCE LIBRARY  
YALE UNIVERSITY  
219 PROSPECT STREET  
P.O. BOX 6666  
NEW HAVEN, CT 06511

SMITHSONIAN INSTITUTION LIB.  
WASHINGTON, DC 20560

UNIVERSITY OF DELAWARE  
LIBRARY-SERIALS DEPT.  
NEWARK, DE 19711

ENVIRONMENTAL QUALITY LAB. INC.  
1009 TAHIAHI TRAIL  
PORT CHARLOTTE INDUSTRIAL PARK  
PORT CHARLOTTE, FL 33952

LIBRARY, U.S.E.P.A.  
ENVIRONMENTAL RESEARCH LAB.  
SABINE ISLAND  
GULF BREEZE, FL 32561

R. H. STROZIER LIBRARY  
SERIALS DEPT.  
FLORIDA STATE UNIVERSITY  
TALLAHASSEE, FL 32306

LIBRARY  
HARBOR BRANCH FOUNDATION, INC.  
R.R. 1, BOX 196  
FT. PIERCE, FL 33450

LIBRARY SERIALS DEPT.  
FLORIDA INTERNATIONAL UNIV.  
TAHIAHI TRAIL  
MIAMI, FL 33199

FLORIDA DEPT. NATURAL RES.  
MARINE RESEARCH LABORATORY  
100 EIGHTH AVENUE  
ST. PETERSBURG, FL 33701

FISHERIES LIBRARY  
NOAA  
75 VIRGINIA BEACH DRIVE  
MIAMI, FL 33149

RSHAS LIBRARY  
UNIVERSITY OF MIAMI  
4600 RICKENBACKER CAUSEWAY  
MIAMI, FL 33149

UNIV. OF FLORIDA LIBRARY  
SERIALS DEPT.  
GAINESVILLE, FL 32611

DEPT. OF NATURAL RESOURCES  
COASTAL RESOURCES DIVISION  
1200 GLYNN AVENUE  
BRUNSWICK, GA 31523

UNIV. OF GEORGIA LIBRARIES  
PERIODICALS DESK-SC  
ATHENS, GA 30602

BISHOP MUSEUM LIBRARY  
P.O. BOX 19000-A  
HONOLULU, HI 96819

MAIN LIBRARY  
UNIV. OF HAWAII AT HILO  
1400 KAPIOLANI STREET  
HILO, HI 96720

NOAA LIBRARY  
NATIONAL MARINE FISHERIES SER.  
P.O. BOX 3830  
HONOLULU, HI 96812

PRAWN AQUACULTURE PROGRAM  
AHUENUE FISHERIES RES. CENTER  
AREA 4, SAND ISLAND  
HONOLULU, HI 96819

UNIVERSITY OF HAWAII LIBRARY  
SERIALS RECEIVING  
2550 THE MALL  
HONOLULU, HI 96822

LIBRARY - SUBSCRIPTIONS  
FIELD MUSEUM OF NATURAL HIST.  
CHICAGO, IL 60605

PERIODICALS/RECORD CLERK  
HARRIS LIBRARY  
SOUTHERN ILLINOIS UNIVERSITY  
CARBONDALE, IL 62901

SERIALS-PAK  
UNIV. OF ILLINOIS LIBRARY  
1408 W. GREGORY DRIVE  
URBANA, IL 61801

CRAWFISH RESEARCH CENTER  
DEPT. OF ANIMAL INDUSTRY  
UNIV. OF SOUTHWESTERN LA.  
USL BOX 44650  
LAFAYETTE, LA 70504

SERIALS DEPT.  
TROY H. MIDDLETON LIBRARY  
LOUISIANA STATE UNIVERSITY  
BATON ROUGE, LA 70803

LUNCOM  
STAR ROUTE BOX 541  
CHAUVIN, LA 70344

SERIALS DEPT.  
DUPRE LIBRARY, USL  
302 EAST ST. MARY BOULEVARD  
LAFAYETTE, LA 70504

LOUISIANA DEPT. WILDLIFE & FISH  
MARINE BIOLOGICAL LABORATORY  
P.O. BOX 37  
GRAND ISLE, LA 70358

MARINE BIOLOGICAL LABORATORY  
LIBRARY  
WOODS HOLE, MA 02543

THE LIBRARY  
MUSEUM OF COMPARATIVE ZOOLOGY  
HARVARD UNIVERSITY  
CAMBRIDGE, MA 02138

SCIENCE LIBRARY  
CLARK SCIENCE CENTER  
SMITH COLLEGE  
NORTHAMPTON, MA 01063

NATIONAL AQUARIUM LIBRARY  
PIER 3, 501 E. PRATT  
BALTIMORE, MD 21202

ACQUISITIONS SECT. OA/D823;  
IRDB D823  
LIB. & INFO. SERVICES NOAA  
6009 EXECUTIVE BLVD.  
ROCKVILLE, MD 20852

UNIV. MARYLAND/MCKELDIN LIBRARY  
BOX S-32433  
SERIALS DEPT.  
COLLEGE PARK, MD 20742

DEPT. OF MARINE RESOURCES  
FISHERIES RESEARCH LABORATORY  
LIBRARY  
W. BOOTHBAY HARBOR, ME 04575

UNIVERSITY OF MAINE  
IRA C. DARLING CENTER FOR RES.  
LIBRARY  
WALPOLE, ME 04573

NORTH ENGINEERING LIBRARY  
UNIV. MICHIGAN, NORTH CAMPUS  
1002 INSTITUTE SCI. & TECH.  
ANN ARBOR, MI 48105

BIO-MEDICAL LIBRARY  
DIEHL HALL, 505 ESSEX ST., S.E.  
UNIVERSITY OF MINNESOTA  
MINNEAPOLIS, MN 55455

LINDA HALL LIBRARY  
SERIALS DEPT.  
5109 CHERRY  
KANSAS CITY, MO 64110

THE GUNTER LIBRARY  
GULF COAST RESEARCH LABORATORY  
EAST BEACH  
OCEAN SPRINGS, MS 39564

COOK LIBRARY, PERIODICALS DEPT  
S.S. BOX 5053  
UNIVERSITY OF SOUTHERN MISS.  
HATTIESBURG, MS 39405

SERIALS DEPARTMENT  
BELK LIBRARY  
APPALACHIAN STATE UNIVERSITY  
BOONE, NC 28608

U.S. DEPT. COMMERCE, NOAA  
NATIONAL MARINE FISHERIES SER.  
BEAUFORT LABORATORY LIBRARY  
BEAUFORT, NC 28516

WH. H. RANDALL LIBRARY  
CONTINUATIONS  
UNC AT WILMINGTON  
WILMINGTON, NC 28406

UNIV. OF NEBRASKA LIBRARY  
ACQUISITIONS DEPT.  
LINCOLN, NE 68588

SERIALS DIVISION  
PRINCETON UNIVERSITY LIBRARY  
PRINCETON, NJ 08540

C.N.R.S.  
P.O. BOX L  
JAMAICA, NY 11430

HOFSTRA UNIVERSITY LIBRARY  
PERIODICALS DEPT.  
HEMPSTEAD, NY 11550

SOUTHAMPTON COLLEGE LIBRARY  
LONG ISLAND UNIVERSITY  
MONTAUK HIGHWAY, RTE. 27  
SOUTHAMPTON, NY 11968

N.Y. STATE LIBRARY  
SERIALS CONTROL DIVISION  
CULTURAL ED. CENTER  
EMPIRE STATE PLAZA  
ALBANY, NY 12230

RICHARD H. TITGEN  
DEPT. OF OCEANOGRAPHY  
TEXAS A&M UNIVERSITY  
COLLEGE STATION, TEXAS 77843

A. TJONNELAND  
ZOOLOGICAL LABORATORY  
UNIVERSITY OF BERGEN  
N-5014 BERGEN-U  
NORWAY

JACK TOMLINSON  
858 TOLL HOUSE GULCH ROAD  
FELTON, CA 95018

LESLIE W. TOUART  
7202-201 GROVETON GARDENS RD.  
ALEXANDRIA, VA 22306

JAMIE TRAUTHAN  
SCHOOL OF OCEANOGRAPHY  
OREGON STATE UNIVERSITY  
CORVALLIS, OR 97330

SARA-ANN F. TREAT  
2016 E 131 AVE., #4  
TAMPA, FL 33612

DAVID L. TRIHH  
2127 59TH STREET, #17  
GALVESTON, TX 77550

ELIZABETH MICHELE TRINAST  
P. O. BOX 4570  
UNIVERSITY FINANCE STATION  
IRVINE, CA 92716

FRANK M. TRUESDALE  
SCH. OF FORESTRY & WILD. MAN.  
LOUISIANA STATE UNIVERSITY  
BATON ROUGE, LA 70803

WEN-YOUNG TSENG  
FLAT 2A, UNIV. RES. NO. 5  
THE CHINESE UNIV. OF HONG KONG  
SHATIN, N.T.  
HONG KONG

ROBERT K. TUCKER  
385 GEORGES ROAD  
DAYTON, NJ 08810

MICHAEL TURKAY  
FORSCHUNGSINSTITUT SENCKENBERG  
SENCKENBERGANLAGE 25  
D-6000 FRANKFURT IM-1  
WEST GERMANY

HUGH H. TURNER  
DEPT. OF BIOLOGY  
MCNEESE STATE UNIVERSITY  
LAKE CHARLES, LA 70609

GRETA E. TYSON  
ELECTRON MICROSCOPE CENTER  
MISSISSIPPI STATE UNIV.  
DRAWER EN  
MISSISSIPPI STATE, MS 39762

RICHARD L. UZNANSKI  
135 WILLOW ST.  
MERIDEN, CT 06450

WIM J. M. VADER  
ZOOLOGISK ADELING  
TROMSO MUSEUM  
N-9000 TROMSO  
NORWAY

IVETTE N. VAILLORD  
P. O. BOX 3559  
SAN YSIDRO, CA 92073

WILLARD A. VAN ENGEL  
VA. INST. OF MARINE SCIENCE  
GLOUCESTER POINT, VA 23062

JACQUES VAN MONTFRANS  
DEPT. OF INVERTEBRATE ECOLOGY  
VA. INST. OF MARINE SCIENCE  
GLOUCESTER POINT, VA 23062

TIMOTHY K. VAN WAY  
MARINE SCIENCE INSTITUTE  
NORTHEASTERN UNIVERSITY  
NAHANT, MA 01908

ANA MARIA PIRES VANIN  
INSTITUTO OCEANOGRAFICO  
UNIVERSIDADE DE SAO PAULO  
CAIXA POSTAL 9075  
01000 SAO PAULO, BRAZIL

MARCO VANNINI  
ISTITUTO DI ZOOLOGIA  
VIA ROMANA, 17  
50125 FIRENZE  
ITALY

CYNTHIA VENN  
DEPT. OF EARTH SCIENCE  
MILLERSVILLE STATE COLLEGE  
MILLERSVILLE, PA 17551

GEERAT J. VERMEIJ  
DEPARTMENT OF ZOOLOGY  
UNIVERSITY OF MARYLAND  
COLLEGE PARK, MD 20742

THOMAS VESEY  
IOWA COLLEGE  
715 NORTH AVENUE  
NEW ROCHELLE, NY 10801

GEORGES VEZZIPOULOS  
ZOOLOGICAL LABORATORY  
UNIVERSITY OF ATHENS  
ATHENS 621  
GREECE

DAVID ALLEN VIGH  
BIOLOGY DEPARTMENT BOX 34  
TULANE UNIVERSITY  
NEW ORLEANS, LA 70118

ALEJANDRO VILLALOBOS F.  
DEPT. DE ZOOTECNIA-ISTAPALAPA  
DI. DE ZOOTECNIA Y DE LA  
SALUD, J.I.V. AUTOMOTORA METRO.  
A.P.55535, MEX. 13, DF, MEXICO

ALLAN H. VOGEL  
VTN-OREGON  
25115 SW PARKWAY  
WILSONVILLE, OR 97070

SUSAN L. WADDY  
BIOLOGICAL STATION  
ST. ANDREWS, NE  
CANADA B0G 2R0

VICTORIA A. WADLEY  
CSIRO FISHERIES RESEARCH  
P. O. BOX 21  
CRONULLA N.S.W. 2230  
AUSTRALIA

YOKO WAKABARA  
INST. OCEANOGRAFICO - USP  
CIDADE UNIVERSITARIA - BUTANTAN  
CEP 05508 SAO PAULO  
BRAZIL

LINDA H. WALKER  
MARINE RESEARCH LABORATORY  
100 EIGHTH AVE., S.E.  
ST. PETERSBURG, FL 33701

BARRY R. WALLERSTEIN  
ALLAN HANCOCK FOUNDATION  
UNIV. OF SO. CALIFORNIA  
LOS ANGELES, CA 90007

JERRY G. WALLS  
P. O. BOX 42  
HIGHTSTOWN, NJ 08520

WILLIAM E. WALSER, JR.  
DEPT. OF BIOLOGY, BOX 3725  
UNIV. OF N.C. AT WILMINGTON  
WILMINGTON, NC 28406

SHIAO Y. WANG  
DEPT. OF ZOOLOGY & PHYSIOLOGY  
LOUISIANA STATE UNIVERSITY  
BATON ROUGE, LA 70803

M. R. WARBURG  
DEPARTMENT OF BIOLOGY  
TECHNION-ISRAEL INST. OF TECH  
TECHNION CITY, HAIFA 32000  
ISRAEL

CELIA A. B. WARD  
116 BALDWIN STREET  
SYRACUSE, NY 13210

JANICE H. WARREN  
DEPT. OF BIOL. SCIENCES  
FLORIDA STATE UNIVERSITY  
TALLAHASSEE, FL 32306

TALBOT H. WATERMAN  
610 KBT, DEPT. OF BIOLOGY  
YALE UNIVERSITY  
BOX 6666  
NEW HAVEN, CT 06511

LES WATLING  
UNIVERSITY OF HAINE  
IRA C. DARLING CENTER FOR  
RESEARCH, TEACHING & SERVICE  
WALPOLE, ME 04573

HAROLD H. WEBBER  
GROTON BIOINDUSTRIES  
P. O. BOX 378  
GROTON, MA 01450

TOWNSEND E. WEEKS  
COLLEGE OF MARINE STUD  
UNIVERSITY OF DELAWARE  
NEWARK, DE 19711

JUDITH S. WEIS  
DEPARTMENT OF ZOOLOGY  
RUTGERS UNIVERSITY  
NEWARK, NJ 07102

ADRIAN M. WENNER  
MARINE SCIENCE INSTITUTE  
UNIV. OF CA, SANTA BARBARA  
SANTA BARBARA, CA 93106

ELIZABETH L. WENNER  
S.C. MAR. RES. RESEARCH INST.  
P. O. BOX 12559  
CHARLESTON, SC 29412

HENRY O. WERTZ  
DEPARTMENT OF BIOLOGY  
NORTHEASTERN UNIVERSITY  
360 HUNTINGTON AVENUE  
BOSTON, MA 02115

DONALD P. WESTON  
P. O. BOX 2-15  
MCNEESE STATE UNIVERSITY  
LAKE CHARLES, LA 70609

A. QUINTON WHITE  
DEPARTMENT OF BIOLOGY  
JACKSONVILLE UNIVERSITY  
JACKSONVILLE, FL 32211

NICHOLAS H. WHITING  
512 W OCEAN BLVD., APT. 7  
STUART, FL 33494

MARY K. WICKSTEN  
DEPARTMENT OF BIOLOGY  
TEXAS A&M UNIVERSITY  
COLLEGE STATION, TX 77843

T. P. WILBER, JR.  
DEPT. OF OCEANOGRAPHY  
FLORIDA STATE UNIVERSITY  
TALLAHASSEE, FL 32306

STANLEY N. WILKES  
DEPT. OF BIOLOGICAL SCIENCES  
NORTHERN ARIZONA UNIVERSITY  
FLAGSTAFF, AZ 86011

ELIZABETH W. WILKINS  
VA. INST. OF MARINE SCI.  
GLOUCESTER POINT, VA 23062

KRIS WILLENS  
HAGENSTRAAT 82A  
B-9210 HEUSDEN  
BELGIUM

AUSTIN B. WILLIAMS  
SYSTEMATICS LABORATORY  
NAT. MARINE FISHERIES SERVICE  
SMITHSONIAN INSTITUTION  
WASHINGTON, DC 20560

ERNEST H. & LUCY B. WILLIAMS  
UNIVERSITY OF PUERTO RICO  
DEPT. OF MARINE SCIENCES  
HAYAGUEZ, PR 00708

ISABELLE P. WILLIAMS  
REDFIELD I-34  
WOODS HOLE OCEANOGRAPHIC INST.  
WOODS HOLE, MA 02543

HERYL J. WILLIAMS  
SOUTH PACIFIC COMMISSION  
P. O. BOX 5  
NOUMEA CEDEX  
NEW CALDONIA

JUDITH L. WILLIAMS-HOWZE  
232 CHAGRIN BOULEVARD  
CHAGRIN FALLS, OH 44022

GEORGE D. WILSON  
SCRIPPS INST. OF OCEAN. A-002  
LA JOLLA, CA 92093

KIM A. WILSON  
DEPARTMENT OF BIOLOGY  
UNIV. OF PENNSYLVANIA  
PHILADELPHIA, PA 19104

RICHARD N. WINN  
C/O MARINE REVIEW COMMITTEE  
U.S.C. STUDY GROUP  
533 STEVENS BLVD. SUITE D-62  
SOLANA BEACH, CA 92075

E. R. WITKUS  
DEPT. OF BIOLOGICAL SCIENCES  
FORDHAM UNIVERSITY  
BRONX, NY 10458

THOMAS G. WOLCOTT  
DEPT. OF SCI. & ENGINEERING  
BOX 5923, N. C. STATE UNIV.  
RALEIGH, NC 27650

ALLEN F. WOLFE  
BIOLOGY DEPARTMENT  
LEBANON VALLEY COLLEGE  
ANNVILLE, PA 17003

ROBERT J. WOLFF  
TRINITY CHRISTIAN COLLEGE  
6601 WEST COLLEGE DRIVE  
PALOS HEIGHTS, IL 60463

DANA L. WOODRUFF  
BATTELLE MARINE RES. LAB  
358 WASHINGTON HARBOR RD.  
SEQUIH, WA 98302

JACK O. WORD  
5527 227TH ST., SE  
BOTHELL, WA 98011

JOHN S. WRIGHT  
P. O. BOX 4278  
SANTA BARBARA, CA 93103

SHI-KUEI WU  
MUSEUM  
UNIV. OF COLORADO, BOULDER  
CAMPUS BOX 218  
BOULDER, CO 80309

JILL YAGER  
P. O. BOX F-931  
FREEPORT, BAHAMAS

TADASU YAHASHITA  
TODA AQUARIUM  
TOBA CITY 3-3-6  
HIE PREFECTURE 517  
JAPAN

WEI-SUUN YANG  
6053 37TH AVENUE, NE  
SEATTLE, WA 98115

WON TACK YANG  
MARINE BIOMEDICAL INSTITUTE  
UNIV. OF TEXAS MEDICAL BRANCH  
GALVESTON, TX 77550

HARRY C. YEATHAN  
P. O. BOX 356  
SEWANEE, TN 37375

SUNG KYOO YOO  
599-1, DAE YUN DONG  
NAM KU, BUSAN 601-01  
KOREA

FRED E. YOST  
5455-A SHEFFIELD COURT  
ALEXANDRIA, VA 22311

ALAN M. YOUNG  
BIOLOGY DEPARTMENT  
NASSON COLLEGE  
SPRINGVALE, ME 04083

JOSEPH H. YOUNG  
BIOLOGICAL SCIENCES  
SAN JOSE STATE UNIVERSITY  
SAN JOSE, CA 95192

JOHN Y. L. YU  
ENDOCRINOLOGY LABORATORY  
INSTITUTE OF ZOOLOGY  
ACADEMIA SINICA, NANKANG  
TAIPEI 115, TAIWAN, R.O.C.

GILBERT ZAMORA, JR.  
NMFS/NOAA  
GALVESTON LABORATORY  
4700 AVENUE U  
GALVESTON, TX 77550

ENGELINA A. ZELICKMAN  
UL. NARETKINA 13  
KORP. 2, KV 3  
MOSCOW 117420  
USSR

D. J. ZIMMERMAN  
DEPARTMENT OF ZOOLOGY  
DUKE UNIVERSITY  
DURHAM, NC 27706

ROGER J. ZIMMERMAN  
NOAA NAT. MAR. FISH. SERVICE  
GALVESTON LABORATORY  
4700 AVENUE U  
GALVESTON, TX 77550

KATHLEEN E. CAIN ZINNEL  
DEPT. OF ECOL. & BER. BIOLOGY  
318 CHURCH STREET  
UNIV. OF MINNESOTA  
MINNEAPOLIS, MN 55431

ELIZABETH M. ZIPP  
316 KINGSTON AVENUE  
BARRINGTON, NJ 08007

SERIALS AND BINDING DEPARTMENT UNIV. OF ROCHESTER LIBRARY RIVER CAMPUS STATION ROCHESTER, NY 14627	TEXAS A & M AT GALVESTON LIBRARY P.O. BOX 1675 GALVESTON, TX 77553	LIBRARY VIRGINIA INST. MARINE SCIENCES GLOUCESTER POINT, VA 23062	SWETS NORTH AMERICA BOX 517 BERWYN, PA 19312
SERIALS DEPT. KENT STATE UNIVERSITY LIBRARY KENT, OH 44240	ANGELO STATE UNIVERSITY PORTER HENDERSON LIBRARY SAN ANGELO, TX 76901	LIBRARY, SERIALS RECEIVING VPI & STATE UNIVERSITY BLACKSBURG, VA 24061	LITERATURE RES. DEPT. BIOSCIENCES INFO. SERVICE 2100 ARCH STREET PHILADELPHIA, PA 19103
ACQUISITIONS DEPT. UNIVERSITY OF OKLAHOMA LIBRARY 401 WEST BROOKS, ROOM 130 NORMAN, OK 73019	U.S. DEPT. COMMERCE, NOAA SEFC-GALVESTON LABORATORY 47 AVENUE U GALVESTON, TX 77550	UNIV. OF WASHINGTON CRANGON FEEDING 61-4900 FISHERIES WH-10 SEATTLE, WA 98195	AQUATIC SCI. & FISH. INFO. SYS. U.K. NAT. COORDIN. INPUT CENTER THE LABORATORY, CITADEL HILL PLYMOUTH PL1 2PB ENGLAND, UK
OREGON STATE UNIVERSITY KERR LIBRARY SERIALS DEPT. CORVALLIS, OR 97331	SUL ROSS STATE UNIVERSITY LIBRARY ALPINE, TX 79830	LIBRARY KRAMER, CHIN & MAYO, INC. 1917 FIRST AVENUE SEATTLE, WA 98101	CHEMICAL ABSTRACTS SERV. LIB. 2540 OLENTANGY RIVER RD. P.O. BOX 3012 COLUMBUS, OH 43210
LIBRARY ACADEMY OF NATURAL SCIENCES 19TH & THE PARKWAY PHILADELPHIA, PA 19103	OFFICE OF ENDANGERED SPECIES (LIBRARY) DEPT. OF INTERIOR 1000 N. GLEBE ROAD ARLINGTON, VA 22203	LIBRARY NORTHWEST & ALASKA FISH. CENTER 2725 MONTLAKE BOULEVARD, E. SEATTLE, WA 98112	OCEANIC ABSTRACTS CAMBRIDGE SCIENTIFIC ABSTRACTS 5161 RIVER RD. BETHESDA, MD. 20816
MARINE SCIENCES RESEARCH INST. LIBRARY P.O. BOX 12559 CHARLESTON, SC 29412	OLD DOMINION UNIV. LIBRARY ACQUISITIONS - SERIALS NORFOLK, VA 23508	UNIV. OF WASHINGTON LIBRARIES SERIALS DIVISION SEATTLE, WA 98195	

### *Foreign Institutional Subscribers as of March 1, 1982*

LIBRARIAN MUSEUMS & ART GALLERIES, N.T. BOX 4646 DARWIN N.T. 5794 AUSTRALIA	W.C.U.N.B.S. ATTN. CHRISTINE MILLIKEN BAMFIELD MARINE STATION BAMFIELD, B.C. V0R 1B0 CANADA	BIBLIOTHEQUE, LABORATOIRE ARAGO 66650 BANYULS-SUR-MER FRANCE	RIJKSMUSEUM VAN NATUR. HIST. RAMSTEEG 2 LEIDEN NETHERLANDS
FISHERIES LIB., S.A. DEPT. FISH. G.P.O. BOX 1625 ADELAIDE S.A. 5001 AUSTRALIA	LIBRARY BEDFORD INST. OF OCEANOGRAPHY BOX 1006, DARTMOUTH NOVA SCOTIA CANADA	SERVICE DOCUMENTATION CENTRE OCEANOLOGIQUE, BRETAGNE B.P. 337 29273 BREST CEDEX FRANCE	ZOOLOGY DEPARTMENT NAGARJUNA UNIVERSITY NAGARJUNANAGAR ANDHARA PRADISH 522 510 INDIA
R. HILL & SON, LTD. 29 KING WILLIAM ST. ADELAIDE S.A. 5000 AUSTRALIA	DEPT. OF FISHERIES & OCEANS BIOLOGICAL STATION LIBRARY ST. ANDREWS, N.B. CANADA E0G 2X0	BIBLIOTHEQUE - I.S.T.P.H. B.P. 1049 RUE DE L'ILE D'YEU 44037 NANTES CEDEX FRANCE	LEMBAGA BIOLOGI NASIONAL--LIPI JALAN RAYA JUANDA 18 P.O. BOX 110 BOGOR INDONESIA
LIFE SCIENCES LIBRARY AUSTRALIAN NATIONAL UNIVERSITY P.O. BOX 4 CANBERRA A.C.T. AUSTRALIA 2600	SERIALS DEPT. DALHOUSIE UNIVERSITY LIBRARY HALIFAX N.S. CANADA B3H 4H8	MUS. NATIONAL D'HIST. NATUR. LABORATOIRE DE ZOOLOGIE (ARTHROPODES) 61, RUE DE BUFFON PARIS 5, FRANCE	LEMBAGA OSEANOLOGI NASIONAL JL. PASIR PUTIH I - JAKARTA UTARA P.O. BOX 580/DAK INDONESIA
LIBRARY, QUEENSLAND MUSEUM GREGORY TERRACE FORTITUDE VALLEY QLD 4006 AUSTRALIA	CANADA FISHERIES AND OCEANS SCOTIA FUNDY REGIONAL LIBRARY P.O. BOX 550 HALIFAX, N.S. CANADA B3J 2S7	OFFICE DE LA RECHERCHE SCIENTIFIQUE ET TECH. OUTRE-MER C/O A. CROSNIER 24 RUE BAYARD 75008 PARIS, FRANCE	MARINE SCIENCE CENTER UNIVERSITY OF BASRAH BASRAH, IRAQ
SERIALS LIBRARIAN, MAIN LIB. ST. LUCIA QUEENSLAND AUSTRALIA 4067	FISHERIES AND OCEANS FRESHWATER INSTITUTE LIBRARY 501 UNIVERSITY CRESCENT WINNIPEG, MANITOBA CANADA R3T 2N6	BIBLIO. UND INFOSYST. UNIV. OLDENBURG ZEITSCH. ABT. AMMERLANDER HEERSTRASSE 67, D-2900 OLDENBURG, WEST GERMANY	UNIVERSITA' DI BARI IST. E MUS. DI ZOOL. E ANAT. VIA AMENDOLA, 165/A BARI, ITALY
NATURHISTORISCHES MUS. WEIN OESTERRICHISCHE POSTSPARKASSEN GEORGE-COCH-PLATZ 2 A-1018 VIENNA AUSTRIA	NATIONAL MUSEUMS OF CANADA LIBRARY, BIBLIOTHEQUE MUSEES NATIONAUX DU CANADA OTTAWA, ONTARIO CANADA K1A 0M5	BIOLOGISCHE ANSTALT HELGOLAND LIBRARY NOTKESTRASSE 31 D-2000 HAMBURG 52 WEST GERMANY	FAO LIBRARY 00100 - ROME ITALY
RIJSKUNIVERSITEIT GENT LABORATORIUM VOOR MORFOLOGIE EN SYSTEMATIEK DER DIEREN LEDEGANCKST 35 B-9000 GENT BELGIUM	REGIONAL LIBRARY NORTHWEST ATLANTIC FISH. CENT. P.O. BOX 5667 ST. JOHNS, NFLD CANADA A1C 5X1	KRISCHE-MENCKE-BLAESING POSTFACH 2140 D-852 ERLANGEN WEST GERMANY	BIBLIOTECA DI BIOL. ANIMALE UNIVERSITA' DEGLI STUDI DE FIRENZE VIA ROMANA 17 FIRENZE, ITALY
BERMUDA BIOLOGICAL STATION ST. GEORGES WEST FERRY REACH 1-15 BERMUDA	LIBRARY PACIFIC BIOLOGICAL STATION FISHERIES & OCEANS NANAIMO, B.C. CANADA V9R 5K6	SENCKENBERGISCHE BIBLIOTHEK ZEITSCHRIFTENABTEILUNG/DFG BOCKENHEIMER LANDSTR. 134-138 D-6000 FRANKFURT/MAIN BUNDESREPUBLIK DEUTSCHLAND	ISTITUTU TECHNOLOGIA PESCA MOLO MANDRACCHIO 60100 ANCONA ITALY
CEPLAC-DIV. BIBLIO. E DOCUMEN. CAIXA POSTAL 7 45.600 - ITABUNA - BAHIA BRAZIL	PECHES ET OCEANS CANADA BIBL. C.P. 15500 QUEBEC CANADA G1/C 747	BAYERISCHE STAATSBIBLIOTHEK LUDWIGSTRASSE 16 MUNCHEN WEST GERMANY 34	AMAKUSA MAR. BIOL. LABORATORY KYUSHU UNIVERSITY TOMIOKA, REIHOKU-CHO, AMAKUSA KUMAMOTO-KEN 863-25 JAPAN
MUSEU OCEANOGRAFICO BOX 379 RIO GRANDE, RS, 96200 BRAZIL	CENT. DE INVEST. BIOL. MARINA CIBIMA UNIV. AUTO. DE SANTO DOMINGO ZONA 7, SANTO DOMINGO DOMINICAN REPUBLIC	ZOOLOGISCHES INSTITUT - BIBL. BADESTR. 6 D-4400 MUNSTER GERMANY	LIBRARY, NAT. HIST. INSTITUTE NAT. SCI. MUS., HYAKUNIN-CHO, 3-23-1 SHINJUKU-KY TOKYO 160, JAPAN
INSTITUTO DE BIOSCIENCES UNIVERSITY DE SAO PAULO CAIXA POSTAL 11.461 05421 SAO PAULO BRAZIL	FINNISH GAME & FISH. RES. INST. P.O. BOX 193 00131 HELSINKI 13 FINLAND	KONINLIJKE NEDERL. AK. WETENSCH. BIBL., KLOVENIERSBURGW 29 1011 JV AMSTERDAM HOLLAND	SUISANGAKUBU TOSHOKAN HOKKAIDO DAIGAKU MINATOCHO HAKODATE 040 JAPAN (KIN)

KUWAIT UNIVERSITY LIBRARY  
AIR FORWARDING SERVICE  
15 SOUTHWEST PARK  
WESTWOOD  
MASSACHUSETTS 02090

MARINE RESOURCES POLA0630  
COMMONWEALTH OF NORTHERN  
MARIANAS  
SAIPAN, CH 96950

BIBLIOTECA  
CENTRO DE INV. PESQUERA  
APO POSTAL 1306  
ENSENADA, B.C.  
MEXICO

MUSEE OCEANOGRAPHIQUE  
AVENUE SAINT-MARTIN  
MC - MONACO - VILLE  
MONACO

DR. G.F.R. HICKS (STC196)  
NATIONAL MUSEUM OF NEW ZEALAND  
PRIVATE BAG  
WELLINGTON  
NEW ZEALAND

LIBRARIAN  
N.Z. OCEANOGRAPHIC INSTITUTE  
P.O. BOX 12346  
WELLINGTON NORTH  
NEW ZEALAND

SCIENCE LIBRARIAN  
P.O. BOX 56  
DUNEDIN  
NEW ZEALAND

UNIV. I OSLO, BIOL. BIBL.(UBO)  
POSTBOKS 1054 BLINDERN  
N-OSLO 3  
NORWAY

UNIVERSITY OF OSLO  
ZOOLOGICAL MUSEUM  
SAHS GATE 1  
OSLO 5  
NORWAY

INST. NAC. INVEST. DAS PASCAS  
DIVISAO DE INFORMACAO E DOCUM.  
AV. BRASILIA  
1400 LISBOA  
PORTUGAL

DEPT. OF AGRI. & FISH, SCOTLAND  
MARINE LABORATORY LABORATORY  
P.O. BOX 101  
VICTORIA RD., ABERDEEN AB9 8D6  
SCOTLAND

THE LIBRARY  
ROYAL SCOTTISH MUSEUM  
CHAMBERS STREET  
EDINBURGH EH1 1JP  
SCOTLAND

BIBLIOTECA  
INSTITUTO INVEST. DE PESQUERAS  
PASEO NACIONAL, S/N  
BARCELONA, 3  
SPAIN

INSTITUTE OF FRESHWATER RES.  
S-170 11 DROTNINGHOLM  
SWEDEN

KUNGL VETENSKAPSAKADEMIEN  
BIBLIOTEKET  
S-104 05 STOCKHOLM 50  
SWEDEN

INSTITUTE OF MARINE AFFAIRS  
P.O. BAG 135  
ST. JAMES POST OFFICE  
ST. JAMES  
TRINIDAD, W.I.

THE LIBRARY  
RIVER LABORATORY  
EAST STOKE, WAREHAM  
DORSET, U.K.

ACCESSIONS DEPT. BRITISH LIB.  
LENDING DIVISION  
BOSTON SPA, WETHERBY  
YORKSHIRE LS23 7BQ  
ENGLAND, U.K.

GENERAL LIBRARY  
BRITISH MUSEUM (NAT. HIST.)  
CROMWELL ROAD  
LONDON SW7 5BD  
U.K.

FRESHWATER BIOLOGICAL ASSN.  
WINDERMERE LABORATORY  
THE FERRY HOUSE, AMBLESIDE  
CUMBRIA  
ENGLAND LA22 0LP U.K.

LIBRARY H.A.F.F.  
FISHERIES LABORATORY  
LOHSTOFT, SUFFOLK, NR33 0HT  
ENGLAND, U.K.

SCIENCE REFERENCE LIBRARY  
25 SOUTHAMPTON BUILDINGS  
CHANCERY LANE  
LONDON WC2A 1AW  
ENGLAND, U.K.

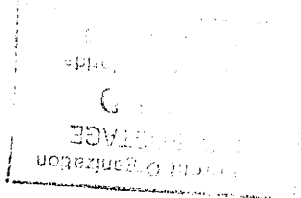
LIBRARIAN, PERIODICALS DEPT.  
UNIV. COLLEGE OF SWANSEA  
SINGLTON PARK, SWANSEA SA2 8PP  
GREAT BRITAIN, UK

LIBRARIAN  
NATIONAL MUSEUM OF WALES  
CATHAYS PARK, CARDIFF CF1 3NP  
WALES, UK

ESTACION DE INVESTIGACIONES  
MARIN S DE MARGARITA  
BIBLIOTECA, APART.144-COD 6318  
PUNTA DE PIEDRAS, NUEVA ESPARTA  
VENEZUELA

BIBLIOTECA GENERAL  
UNIV. ORIENTE NUC. NUEVA ESP.  
APARTADO POSTAL 147  
GUATANARE, EST. NUEVA ESPARTA  
VENEZUELA

DENTON BEIK  
840 E. MUIBERRY  
SAN ANTONIO, TX 78222



L. G. STALE  
FLORIDA STATE UNIVERSITY  
DEPT. BIOLOGICAL SCIENCE  
TALLAHASSEE, FL 32306